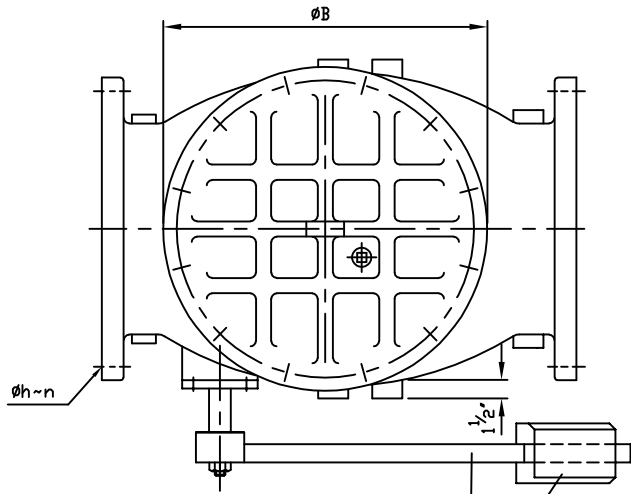
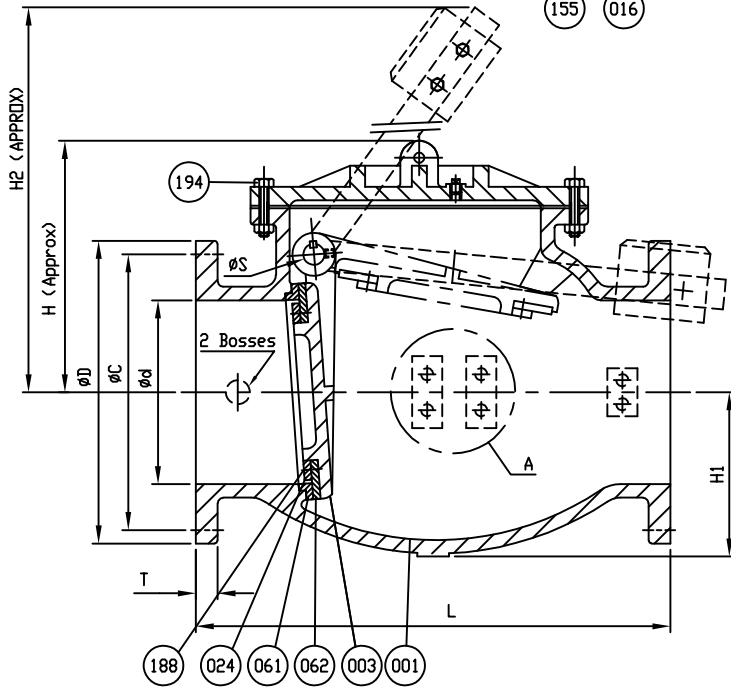
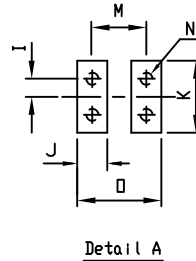


DS01 ISSUED : 240640 REVISED: - USA1362C=>CHANGE THREAD UNC



Marking

SIZE (INCH) \oplus
 CCNE SCI.
 150 CWP YEAR
 AWWA C508 POURING DATE
 SERIES 8000



- Dimensions in inches

COVER BOLTS/NUTS		
TYPE	MATERIAL	
STANDARD	STEEL/ZINC	<input checked="" type="checkbox"/>
S1	304 STN. STEEL	
S3	316 STN. STEEL	

REFERENCE ONLY

NO.	PARTS	MATERIAL	ASTM. DESIGNATION.	Q'TY
352	O-Ring C	Rubber (Buna N)	D 2000 BK 707	2
351	O-Ring B	Rubber (Buna N)	D 2000 BK 707	2
329	Cover O-Ring	Rubber (Buna N)	D 2000 BK 807	1
324	Cover Gasket	Rubber (Buna N)	D 2000 BK 807	1
220	Snap Ring	Stainless Steel	A 276 Type 420	1
198	End Plate Bolt	Zinc Coated Steel	A 307 Grade B	1set
197	Weight Bolt	Zinc Coated Steel	A 307 Grade B	2
194	Cover Bolt & Nut	See Table for Material		1set
188	Disc Seat Bolt	Stainless Steel	A 276 Type 304	1set
166	Plug Ø1"	Stainless Steel	A 276 Type 304	1
161	Key	Stainless Steel	A 276 Type 304	2
159	Hinge Pin	Stainless Steel	A 276 Type 304	1
155	Weight Arm	Ductile Iron	A 536 Gr. 65-45-12	1
076	Bushing (B)	Bronze	B 62	1
075	Bushing (A)	Bronze	B 62	1
062	Disc Seat Ring	Rubber (Buna N)	D 2000 BK 807	1
061	Body Seat Ring	Bronze	B 62	1
057	End Plate (B)	Ductile Iron	A 536 Gr. 65-45-12	1
024	Seat Holder	Ductile Iron	A 536 Gr. 65-45-12	1
016	Weight	Cast Iron	A 126 Class B	1
015	End Plate (A)	Bronze	B 62	1
014	Cover	Cast Iron	A 126 Class B	1
003	Disc	Ductile Iron	A 536 Gr. 65-45-12	1
001	Body	Cast Iron	A 126 Class B	1

MATERIAL LIST			
HYDRD SHELL		300	PSI.
HYDRD VALVE SEAT		150	PSI.
HYDRD BACK SEAT		-	PSI.
AIR SEAT		-	PSI.
STEAM		-	PSI.
TEST PRESSURE			
WORKING PRESSURE		150	PSI.



SCALE	DR. JON COLPAN	DATE 10/20/10	REF. DWG.
N.T.S.	CHK.	APP.	E.C.N. USA1362D

TITLE
 SIZE 14" & 16" SWING CHECK VALVE AWWA C508
 BRONZE BODY SEAT RING & BUNA N DISC SEAT RING
 WITH ONE LEVER AND WEIGHT

TYPE: 8001AB1LW	DWG NO. M80005	REV. 6
-----------------	----------------	--------

SIZE Ød in. mm.	L	ANSI B16.1 CL. 125					ØS	ØB	H	H1	H2	I	J	K	M	N	O
		ØD	ØC	Øh	n	T											
14 (350)	31	21	18 ³ / ₄	1 ¹ / ₈	12	1 ³ / ₈	1 ³ / ₄	22 ³ / ₁₆	19 ⁵ / ₁₆	12 ¹ / ₁₆	29 ¹ / ₂	1	2 ¹ / ₈	4 ¹ / ₂	4	3 ³ / ₄ ×10v<UNC>	6
16 (400)	36	23 ¹ / ₂	21 ¹ / ₄	1 ¹ / ₈	16	1 ⁷ / ₁₆	2	24 ¹ / ₈	21 ¹ / ₂	13 ¹ / ₄	37 ³ / ₄	1	2 ¹ / ₈	4 ¹ / ₂	4	3 ³ / ₄ ×10v<UNC>	6

REVISION 1, CHANGED ITEM 166 MTRL. TYPE FROM MALLEABLE IRON A47 TO, UJC, 03/08/11, ECR# 456
 REVISION 3, ADDED H2 DIMENSION TO DRAWING TO, AA, 2/9/15
 REVISION 5, ADDED COVER O-RING TO MATERIAL TABLE AND REMOVED PAINT NOTE, AA, 11/28/17

REVISION 2, ADDED ITEM 220 SNAP RING MATERIAL TYPE, UJC, 04/04/11, ECR# 491
 REVISION 4, ADDED BOLTING MATERIAL TABLE, AA, 05/20/15
 REVISION 6, UPDATED NEW LOGOS, TT/JL, 07/19/19