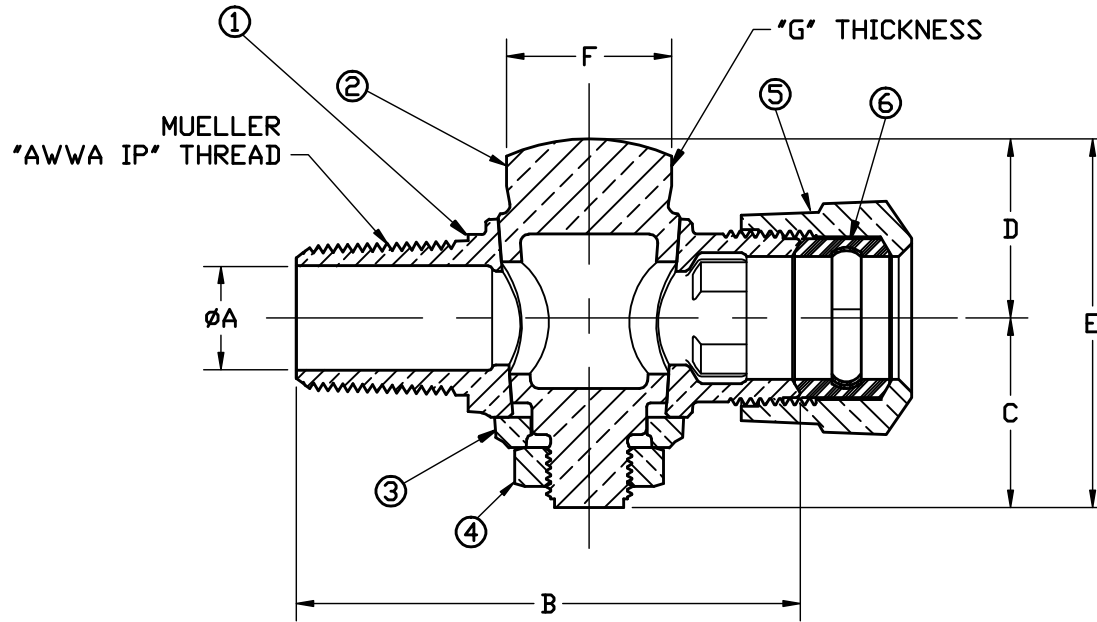


No.	DESCRIPTION	MATERIAL
1	BODY	CAST LOW LEAD BRASS
2	KEY	CAST LOW LEAD BRASS
3	KEY WASHER	CAST BRONZE ASTM B62 ALLOY C83600
4	KEY NUT	CAST BRONZE ASTM B62 ALLOY C83600
5	CTS GSKT SUB	SBR ASTM D2000 -GSKT 410 _{ss} -BAND
6	CONNX NUT	CAST BRASS ASTM B62 ALLOY C83600

SIZE	ØA	B	C	D	E	F	G
1/2	.50	3.12	1.16	1.14	2.30	.86	.34
3/4	.75	3.66	1.38	1.3	2.68	1.20	.38
1	.92	4.31	1.46	1.41	2.87	1.48	.38
1-1/2	1.48	5.98	2.33	2.15	4.48	1.11	SQUARE
2	1.86	6.89	2.47	2.36	4.83	1.23	SQUARE



FILEPATH: PROD-ENG\MUELLER\APPROVED\H15028N

DRF TR	JGarvin	4/7/09	Mueller Co.			
CHKR						
ENGR						
MGR						
BY			DATE	UNLESS OTHERWISE NOTED	THIRD ANGLE PROJECTION	
STK No:			SURFACE PREPARATION:		REF. No.	
MAT'L:			BREAK CORNER(S) ---- .000			SCALE
DESCR.			SURFACE FINISH -- XX RMS		FULL	
CORPORATION STOP - LOW LEAD BRASS			TOLERANCE(S):			
PER EST NO: DXXXX EST FIN WT = 0.0000 lbs			LINEAR ----- ± .000			
			ANGULAR ----- ± 0°00'			
REV	ECR	DESCRIPTION	DATE	BY	CHKR	PART NUMBER
						H15028N

PART NUMBER
H15028N
442-MRKTG