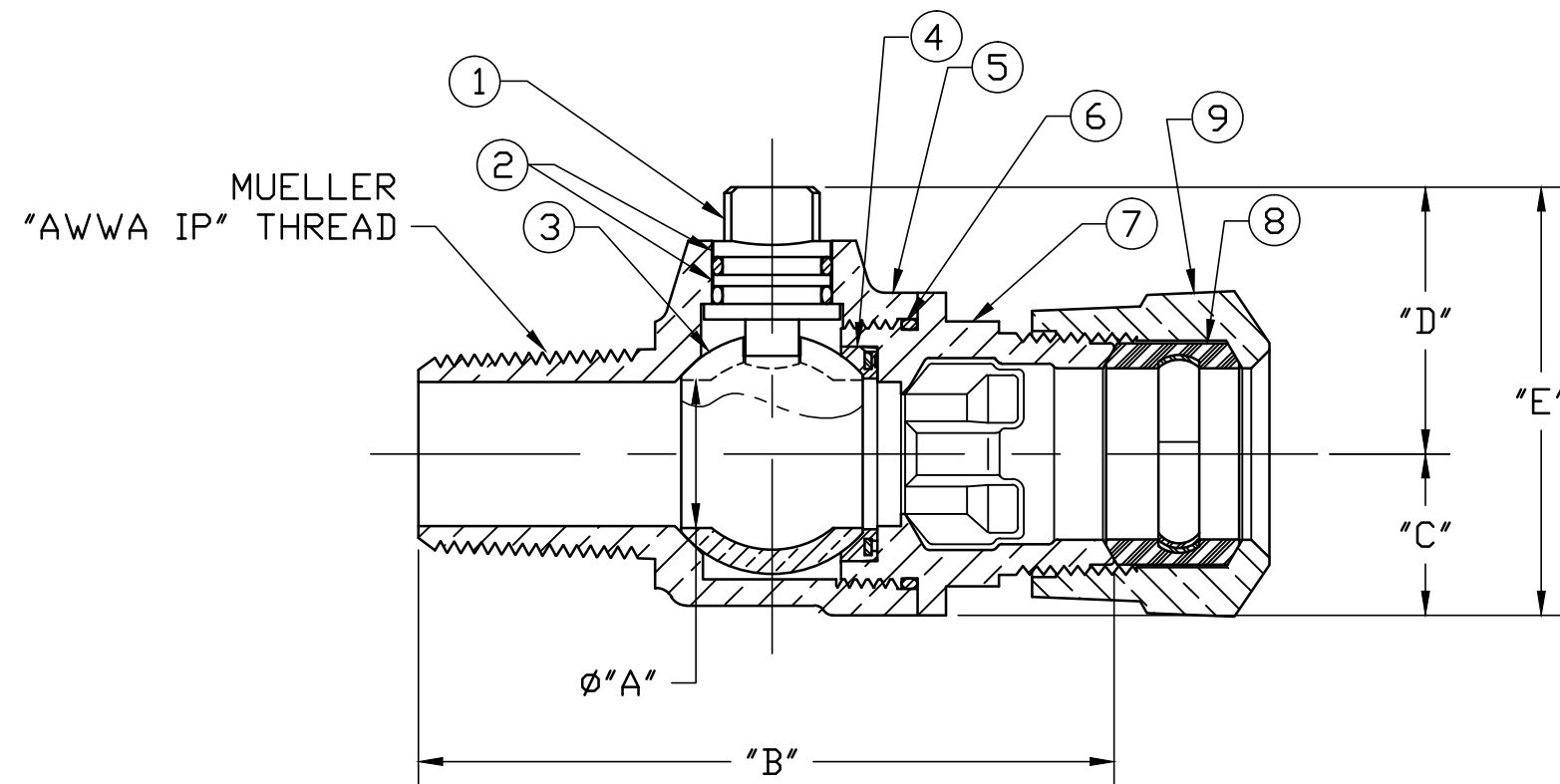


No.	DESCRIPTION	MATERIAL
1	STEM	LOW LEAD BRASS ALLOY
2	O-RING	EPDM D2000
3	BALL	LOW LEAD BRASS ALLOY
4	GASKET - SEAL	NITRILE D2000
5	BODY	CAST LOW LEAD BRASS ALLOY
6	O-RING	EPDM D2000
7	END PIECE	CAST LOW LEAD BRASS ALLOY
8	CTS GSKT SUB	SBR D2000 - GSKT 410ss - BAND
9	CONNX NUT	CAST BRASS ASTM B62 ALLOY C83600



SIZE	ØA	B	C	D	E
3/4	.750	3.621	.840	1.363	2.203
3/4x1	.750	3.855	.840	1.390	2.230
1	1.000	4.648	1.150	1.564	2.714
1-1/2	1.500	5.157	1.500	2.120	3.620
1-1/2x2	1.500	5.133	1.500	2.235	3.735
2	2.000	5.612	1.820	2.443	4.263

ALL WETTED PARTS ARE LOW LEAD BRASS ALLOY

FILEPATH: PROD-ENG\MUELLER\ASYSUBMITTALS\B25028N

							DRFTR	RWB	6/19/13	Mueller Co.	THIRD ANGLE PROJECTION 		
							CHKR						
							ENGR				UNLESS OTHERWISE NOTED SURFACE PREPARATION: BREAK CORNER(S) ---- .000 SURFACE FINISH -- XX RMS TOLERANCE(S): LINEAR ----- ± .000 ANGULAR ----- ± 0°00'	REF. No.	SCALE NONE
							MGR						
								BY	DATE	STK No:			
										MAT'L:			
										DESCR.	BALL CORPORATION LLB VALVE ("AWWA IP" x 110 CTS)	DWG NUMBER B25028N	
							REV	ECR	DESCRIPTION	DATE	BY	CHKR	
							PER EST NO: DXXXX EST FIN WT = 0.0000 lbs						

DWG NUMBER
B25028N
442-MRKTG

TITLE TO AND OWNERSHIP OF THIS ENGINEERING
DATA REMAINS IN Mueller Co. NO USE IS TO BE
MADE OF THIS DATA EXCEPT AS SPECIFICALLY
AUTHORIZED BY Mueller Co. ASSENT ON THE PART
OF THE RECIPIENT TO THESE CONDITIONS IS PRESUMED