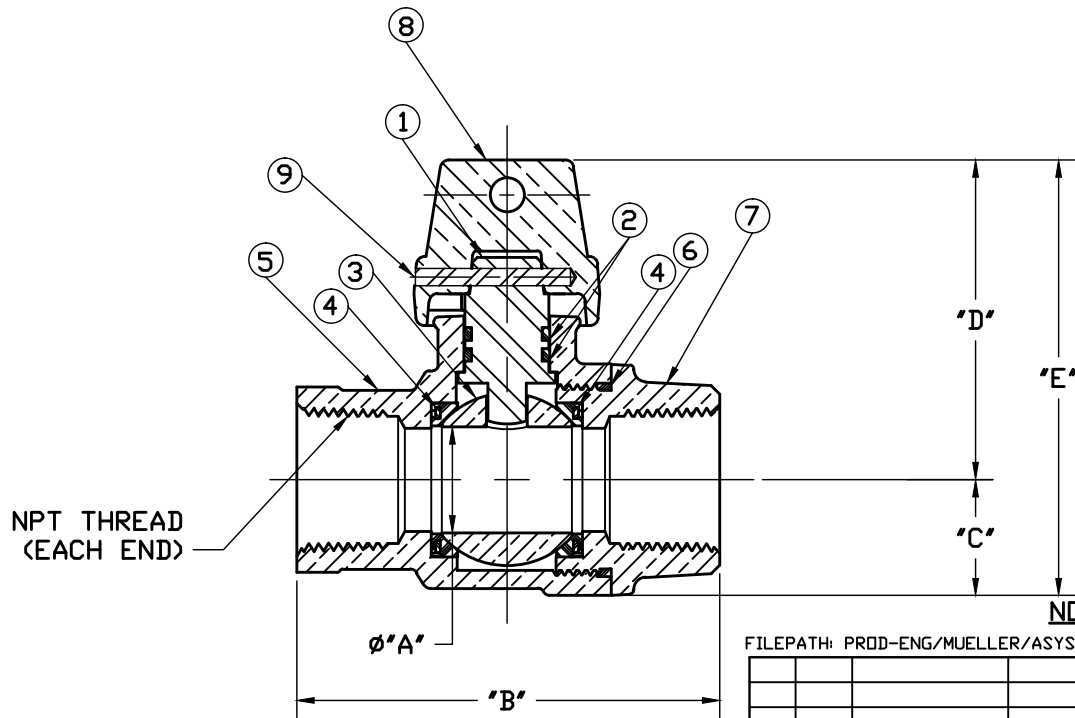


No.	DESCRIPTION	MATERIAL
1	STEM	LOW LEAD BRASS ALLOY
2	O-RING	EPDM D2000
3	BALL	LOW LEAD BRASS ALLOY
4	GASKET - SEAL	NITRILE D2000
5	BODY	CAST LOW LEAD BRASS ALLOY
6	O-RING	EPDM D2000
7	END PIECE	CAST LOW LEAD BRASS ALLOY
8	CAP	CAST BRASS ASTM B62 ALLOY C83600
9	SOLID PIN	AISI 303 STAINLEES STEEL



SIZE	ØA	B	C	D	E
3/4R	.625	2.969	.750	2.120	2.870
3/4	.750	3.070	.840	2.323	3.163
1R	.750	3.522	.840	2.323	3.163
1	1.000	3.972	1.150	2.567	3.717
1x3/4	.750	3.287	.840	2.627	3.467
1-1/2	1.500	4.134	1.500	3.372	4.872
2	2.000	4.940	1.820	3.919	5.739

NOTE: ALL WETTED PARTS ARE LOW LEAD BRASS ALLOY

FILEPATH: PRODD-ENG/MUELLER/ASYSUBMITTALS/B20283N

DRFTRJGarvin	12/21/09	Mueller Co.				
CHKR						
ENGR						
MGR						
BY	DATE	UNLESS OTHERWISE NOTED	THIRD ANGLE PROJECTION			
		SURFACE PREPARATION:				
		BREAK CORNER(S) ---- .000				
		SURFACE FINISH -- XX RMS				
		TOLERANCE(S):	REF. No.	SCALE		
		LINEAR ----- ± .000		NONE		
		ANGULAR ----- ± 0°00'				
		STK No:	DESCR. INLINE CURB BALL VALVE			
		MAT'L:	LOW LEAD BRASS (FIP x FIP)			
REV	ECR	DESCRIPTION	DATE	BY	CHKR	PART NUMBER
						B20283N

PER EST NO: DXXXX EST FIN WT = 0.0000 lbs

PART NUMBER
B20283N
442-MRKTG