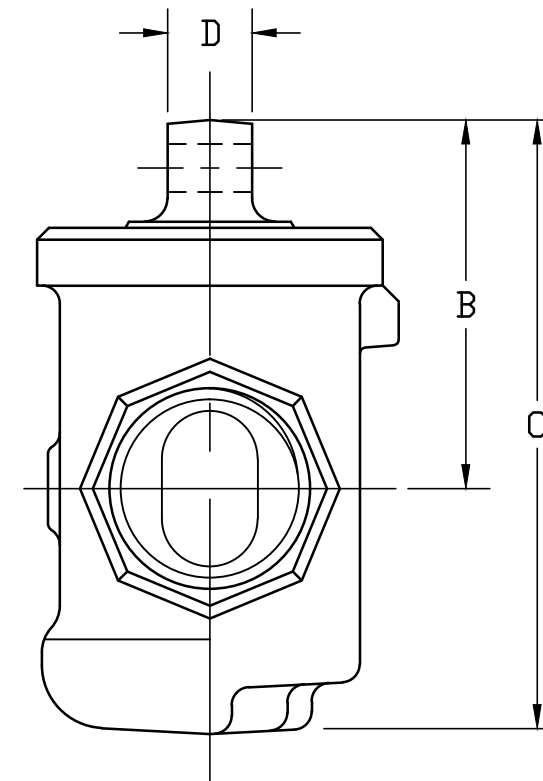
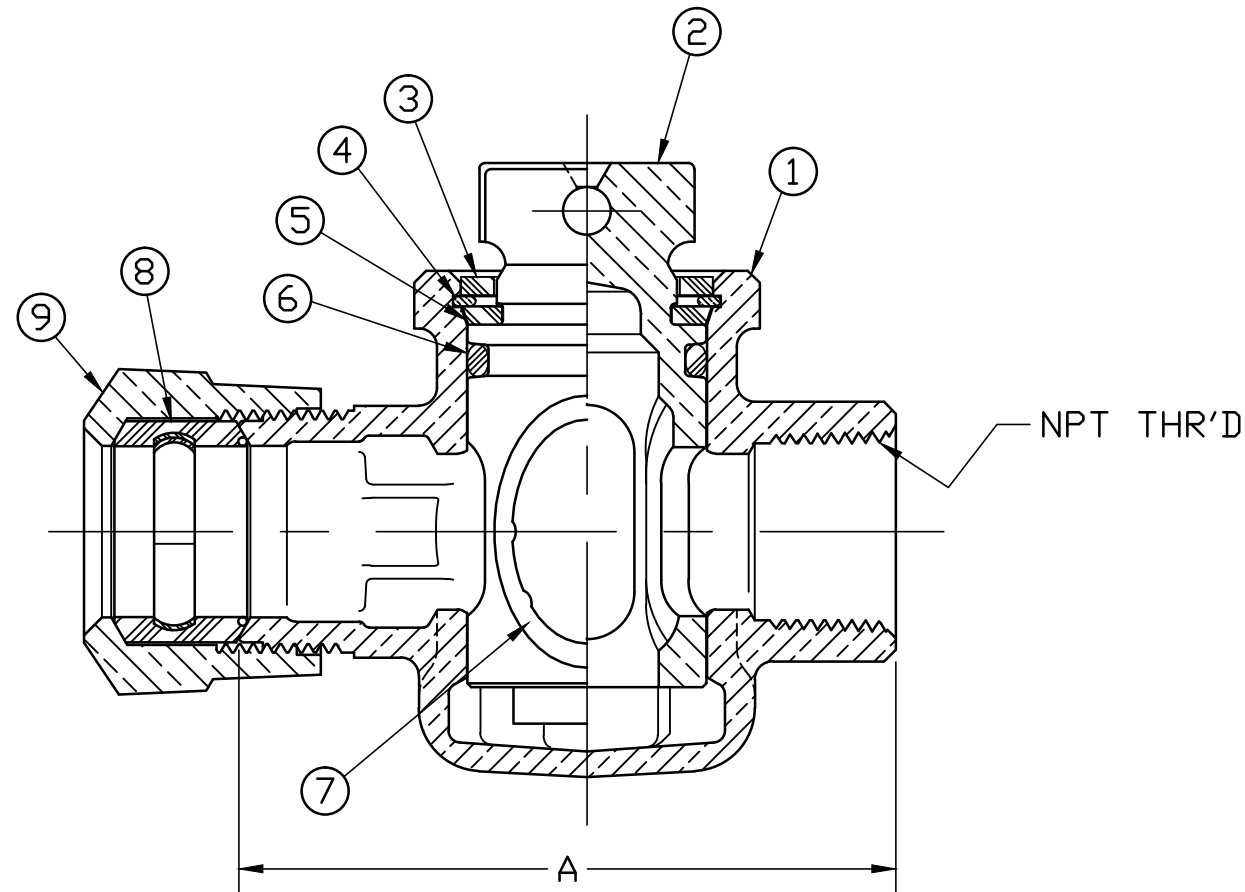


| SIZE | A | B | C | D | NPT |
|------|------|------|------|-----|------|
| 3/4 | 3.42 | 1.92 | 3.17 | .44 | 3/4" |
| 1 | 4.36 | 2.44 | 4.00 | .44 | 1" |

| No. | DESCRIPTION | MATERIAL |
|-----|----------------|----------------------------------|
| 1 | BODY | CAST LOW LEAD BRASS ALLOY |
| 2 | KEY | CAST LOW LEAD BRASS ALLOY |
| 3 | TOP SEAL | RUBBER, MUELLER RUBBER CODE R8 |
| 4 | RETAINING RING | BRONZE ASTM B103 ALLOY C52100 |
| 5 | THRUST WASHER | CELCON GRADE M90 CF2001 |
| 6 | TOP O-RING | RUBBER, ASTM D-2000 (EPDM) |
| 7 | PORT O-RING | RUBBER, ASTM D-2000 (EPDM) |
| 8 | CTS GSKT SUB | SBR D2000 - GSKT 410ss - BAND |
| 9 | CONN. NUT | CAST BRASS ASTM B62 ALLOY C83600 |



ALL WETTED PARTS ARE LOW LEAD BRASS ALLOY

FILEPATH: PROD-ENG\MUELLER\APPROVED\H15172N

PART NUMBER
H15172N
 44²MRKT
 WAS EXP NO:

| | | | | | |
|---|-----|-------------|----------------------------|------------------------|-------------------------------|
| DRFTR | RWB | 2/5/10 | | | |
| CHKR | | | | | |
| ENGR | | | | | |
| MGR | | | | | |
| | | | UNLESS OTHERWISE NOTED | THIRD ANGLE PROJECTION | |
| | | | SURFACE PREPARATION: | | |
| | | | BREAK CORNER(S) ----- .000 | | |
| | | | SURFACE FINISH -- XX RMS | REF. No. | |
| | | | TOLERANCE(S): | SCALE | |
| | | | LINEAR ----- ± .016 | FULL | |
| | | | ANGULAR ----- ± 0°30' | | |
| | | | STK No: | | |
| | | | MAT'L: | | |
| REV | ECR | DESCRIPTION | DATE | BY | CHKR |
| DESCR. H15172 LOW LEAD BRASS MARK II DRISEAL ASSEMBLY (PHASE III) | | | | | |
| PER EST NO: DXXXX EST FIN WT = 0.0000 lbs | | | | | PART NUMBER H15172N |