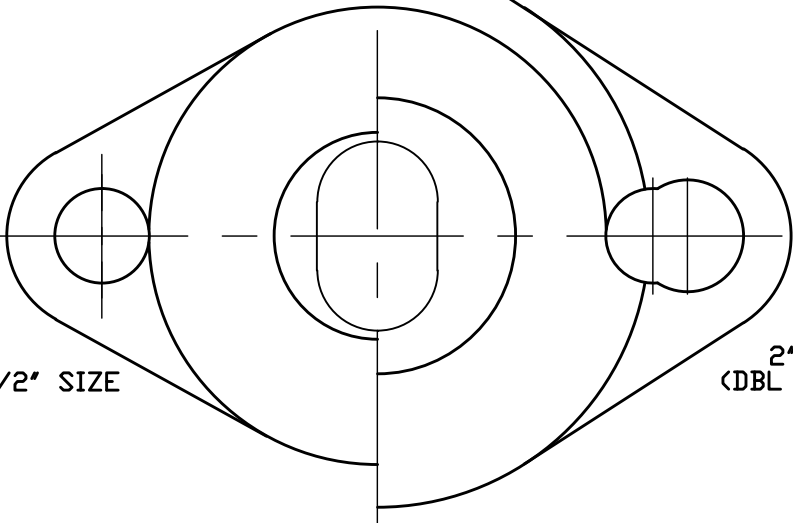


No.	DESCRIPTION	MATERIAL DESCRIPTION
1	BODY	CAST LOW LEAD BRASS ALLOY
2	O-RING	EP ASTM D2000
3	KEY	CAST LOW LEAD BRASS ALLOY
4	SPRING WASHER	ASTM A103 ALLOY C51000 PHOS BRONZE
5	CAP	CAST BRASS ASTM B62 ALLOY C83600
6	GROOVE PIN	ASTM B124 ALLOY 655 SILICON BRONZE
7	CONN. NUT	CAST BRASS ASTM B62 ALLOY C83600
8	CTS GSKT SUB	SBR D2000 - GSKT 410ss - BAND



1-1/2" SIZE

2" SIZE
(DBL DRILLED)

VALVE SIZE	A	B	C	D
1-1/2	1.812"	3.219"	2.786	6.005
2	2.188"	3.199"	3.071	6.270

NOTE: ALL WETTED PARTS ARE LOW LEAD BRASS ALLOY

FILEPATH: PROD-ENG\MUELLER\ASYSUBMITTALS\H14277N

DRFTR	JGarvin	10/11/10			
CHKR					
ENGR					
MGR					
			UNLESS OTHERWISE NOTED	THIRD ANGLE PROJECTION	
			SURFACE PREPARATION:		
			BREAK CORNER(S) ---- .000		
			SURFACE FINISH -- XX RMS	REF. No.	
			TOLERANCE(S):	SCALE	
			LINEAR ----- ± .000		
			ANGULAR ----- ± 0°0'		
			BY	DATE	
			STK No:		
			MAT'L:		
			DESCR.		
			ANGLE METER STOP VALVE	PART NUMBER	
			LOW LEAD BRASS(110 CTS × MTR FLANGE)	H14277N	
REV	ECR	DESCRIPTION	DATE	BY	CHKR
PER EST NO: DXXXX EST FIN WT = 0.0000 lbs					

PART NUMBER
H14277N
44 -MRKTING