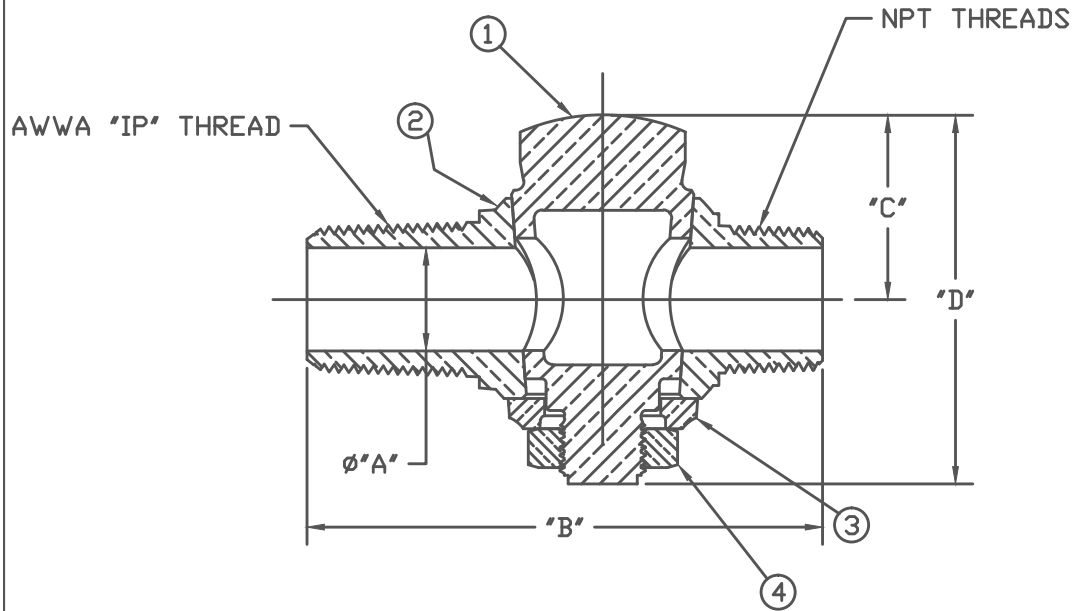


No.	DESCRIPTION	MATERIAL
1	KEY	CAST LOW LEAD BRASS ALLOY
2	BODY	CAST LOW LEAD BRASS ALLOY
3	KEY WASHER	CAST BRASS ASTM B62 ALLOY C83600
4	KEY NUT	CAST BRASS ASTM B62 ALLOY C83600



SIZE	ØA	B	C	D
1/2	.53	3.11	1.17	2.32
3/4	.78	3.81	1.30	2.68
1	1.03	4.36	1.41	2.87
1-1/4	1.28	5.23	1.80	3.80
1-1/2	1.53	6.03	2.16	4.49
2	2.03	7.14	2.42	4.91

**NOTE:** ALL WETTED PARTS ARE LOW LEAD BRASS ALLOY

FILEPATH: PROD-ENG/MUELLER/ASYSUBMITTALS/H10013N

DRFTR	Garvin	10/4/10	<b>Mueller Co.</b>	THIRD ANGLE PROJECTION 	
CHKR					
ENGR					
MGR					
			UNLESS OTHERWISE NOTED	REF. No.	SCALE
			SURFACE PREPARATION:		NONE
			BREAK CORNER(S) ---- .000		
			SURFACE FINISH -- XX RMS		
			TOLERANCE(S):		
			LINEAR ----- ± .000		
			ANGULAR ----- ± 0°00'		
			BY	DATE	
			STK No		
			MAT'L		
			DESCR.	CORPORATION STOP VALVE	
				LOW LEAD BRASS("AWWA IP" x "MIP")	
REV	ECR	DESCRIPTION	DATE	BY	CHKR
PER EST NO: DXXXX			EST FIN WT = 0.0000 lbs		
					PART NUMBER H10013N

PART NUMBER  
H10013N  
442-MRKTNG