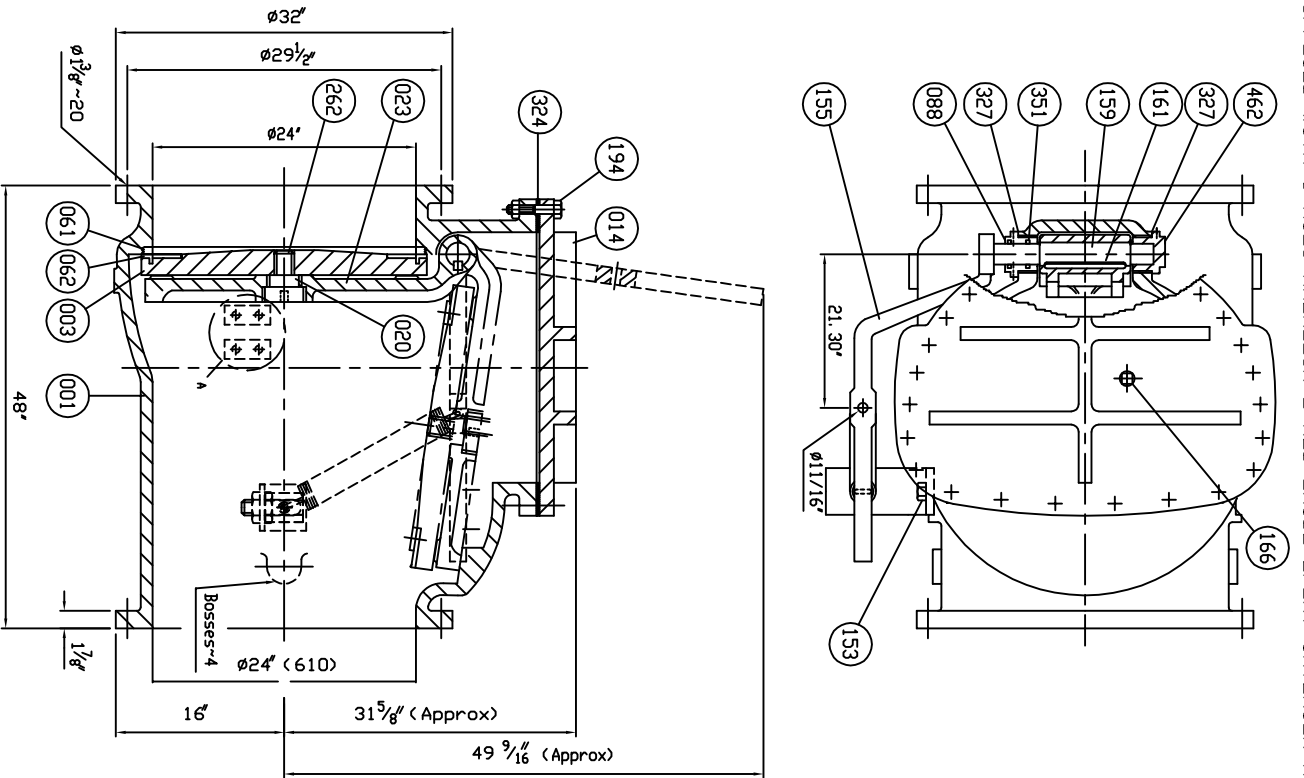


SUPPLIED WITH 8 MILS AMERLOCK 2 RED OXIDE EPOXY INTERIOR AND EXTERIOR OF THE VALVE

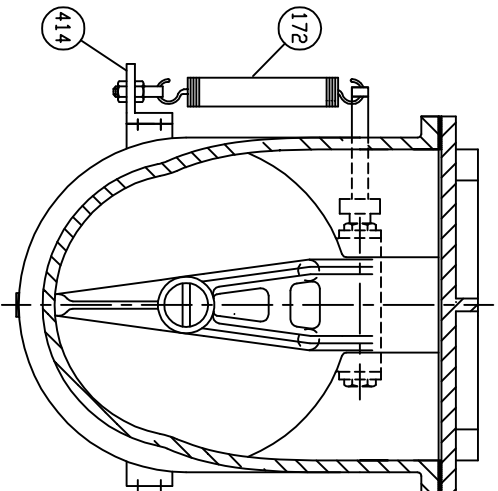
REFERENCE ONLY



Marking

24
 CONE
 150 PSI
 AWMA C508
 CI
 SERIES 8000
 CI

Remark - Flanged dimensions follow ANSI. B16.1 CL. 125



462	Retaining Plug	Brass	B 21	1
414	Arm B	Zinc Coated Steel	A 36	1
351	D-Ring	Rubber (Buna N)	D 2000 BK 707	2
327	Gasket	Rubber (Buna N)	D 2000 BK 807	2
324	Cover Gasket	Rubber (Buna N)	D 2000 BK 807	1
262	Disc Bolt	Stainless Steel	A 276 Type 304	1
194	Cover Bolt & Nut	Zinc Coated Steel	A 307 Grade B	1set
172	Spring	Zinc Coated Steel	A 36	1
166	Plug 1/2"	Stainless Steel	A 276 Type 304	1
161	Key	Stainless Steel	A 276 Type 304	1
159	Hinge Pin	Stainless Steel	A 276 Type 304	1
155	Weight Arm	Ductile Iron	A 536 Gr. 65-45-12	1
153	Bolt	Zinc Coated Steel	A 307 Grade B	2
088	Seat Nut	Brass	B 21	1
062	Disc Seat Ring	Rubber (Buna N)	D 2000 BK 807	1
061	Body Seat Ring	Bronze	B 62	1
023	Arm	Ductile Iron	A 536 Gr. 65-45-12	1
020	Sleeve	Stainless Steel	A 276 Type 304	1
014	Cover	Cast Iron	A 126 Class B	1
003	Disc	Cast Iron	A 126 Class B	1
001	Body	Cast Iron	A 126 Class B	1

MATERIAL LIST

HYDRO SHELL	300	PSI.
HYDRO VALVE SEAT	150	PSI.
HYDRO BACK SEAT	—	PSI.
AIR SEAT	—	PSI.
STEAM	—	PSI.
WORKING PRESSURE	150	PSI.
TEST PRESSURE	150	PSI.

MUELLER CO.

500 WEST ELDORADO ST. P.O. BOX 671 DECATUR, IL 62526	PHONE: 217-423-4471
SCALE N.T.S.	DR. JON COLPAN
DATE 10/17/11	REV. DWG. USA1260D
TITLE SIZE 24" SWING CHECK VALVE AWMA C508 BRONZE BODY SEAT RING & BUNA N DISC SEAT RING WITH ONE LEVER AND SPRING	
TYPE: A2602-6B1LS	DWG NO. M80036
REV.	