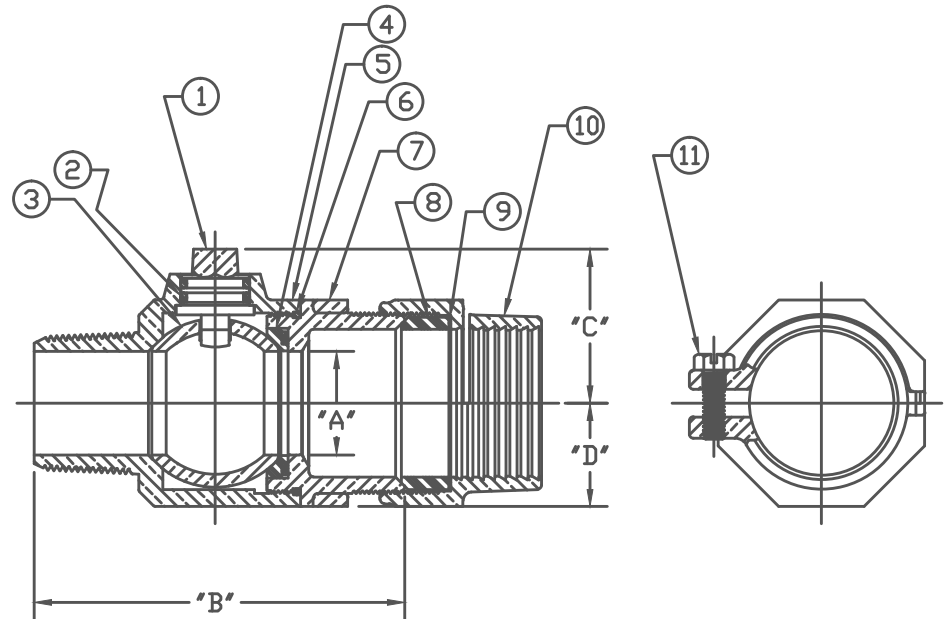



No.	DESCRIPTION	MATERIAL
1	STEM	LOW LEAD BRASS ALLOY
2	O-RING	EP ASTM D2000
3	BALL	LOW LEAD BRASS ALLOY
4	RUBBER GASKET	RUBBER CODE R80
5	BODY	CAST LOW LEAD BRASS ALLOY
6	O-RING	EP ASTM D2000
7	END PIECE	CAST LOW LEAD BRASS ALLOY
8	COMP GASKET	RUBBER CODE R93
9	WASHER	POLYPROPYLENE
10	COUPLING NUT	CAST BRASS ASTM B62 ALLOY C83600
11	CAP SCREW	304 STAINLESS STEEL

SIZE	ØA	B	C	D
3/4"	.75	3.83	1.39	.84
1"	1.00	4.20	1.59	1.15
1-1/2"	1.50	5.50	2.24	1.50
2"	2.00	6.57	2.27	1.82



NOTE: ALL WETTED PARTS ARE LOW LEAD BRASS ALLOY

FILEPATH: PROD-ENG\MUELLER\SUBASSEMBLY\E25009N

						DRFTR JGarvin 1/23/12	Mueller Co.		UNLESS OTHERWISE NOTED SURFACE PREPARATION: BREAK CORNER(S) ---- .000 SURFACE FINISH -- XX RMS TOLERANCE(S): LINEAR ----- ± .000 ANGULAR ----- ± 0°00'		THIRD ANGLE PROJECTION  REF. No. SCALE NONE PLOT HALF			
						CHKR								
						ENGR								
						MGR								
						BY	DATE							
						STK No:								
						MAT'L:								
REV	ECR	DESCRIPTION	DATE	BY	CHKR	DESCR.		BALL CORPORATION VALVE - LLB (CC x PEP\PVC\IPS) PACK JOINT)		PART NUMBER E25009N				
PER EST NO: XXXX EST FIN WT = 0.0000 lbs														

PART NUMBER
E25009N
44²-MRKTING