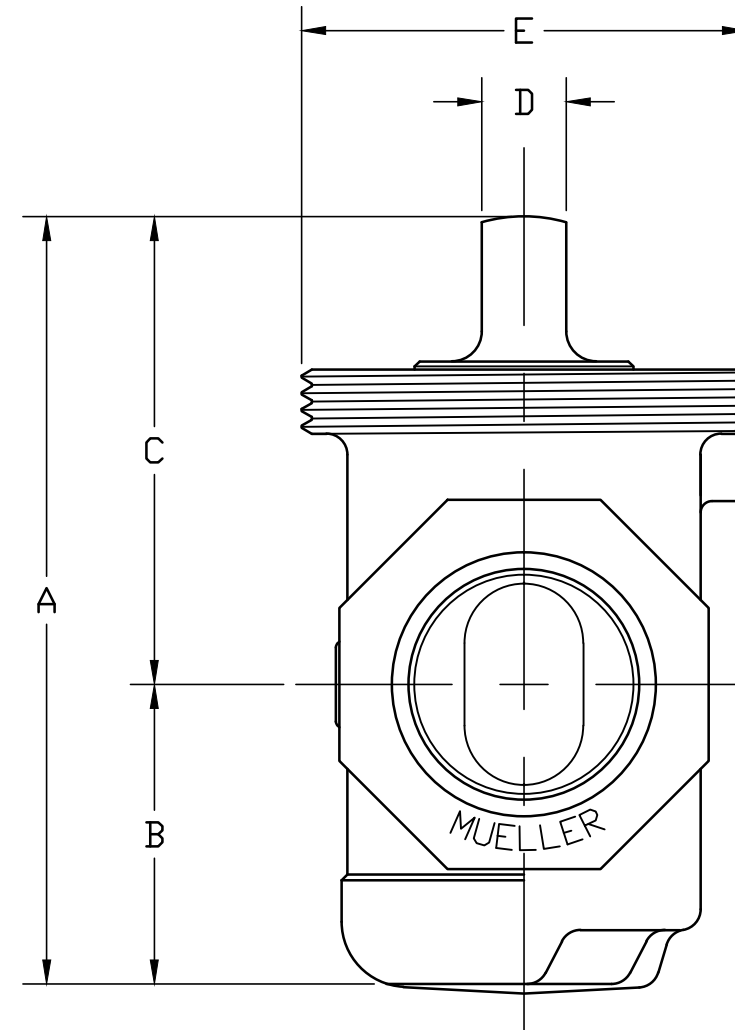
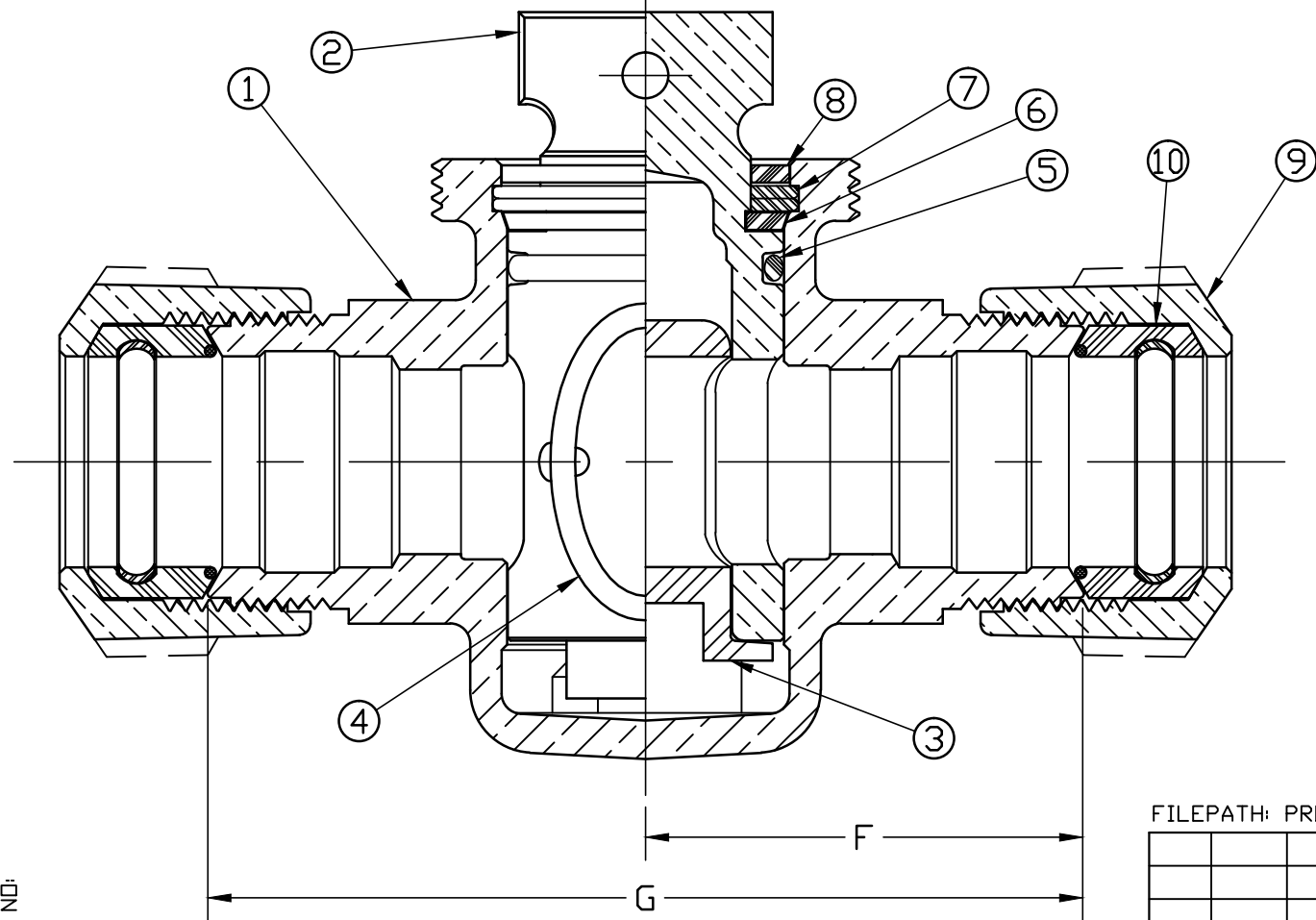


No.	DESCRIPTION	REQ'D	MATERIAL
1	BODY	1	CAST LOW LEAD BRASS ALLOY
2	KEY	1	CAST LOW LEAD BRASS ALLOY
3	KEY INSERT	1	CYCOLACL ASTM D1788-62T TYPE 1 GR 1
4	PORT O-RING	1	RUBBER
5	TOP O-RING	1	RUBBER
6	THRUST WASHER	1	CELCON GRADE M90-04
7	RETAINING RING	2	PHOSPHOR BRONZE ASTM B103
8	TOP SEAL	1	RUBBER
9	COUPLING NUT	2	CAST BRASS ASTM B62 ALLOY C83600
10	GASKET SEAL GRIPPER BAND ASS'Y	2	410 STAINLESS STEEL, RUBBER

SIZE	A	B	C	D	E	F	G
3/4"	3.47	1.34	2.12	.44	1.848-11 1/2	2.12	4.25
1"	4.25	1.56	2.56	.50	2.316-11 1/2	2.38	4.75



DWG NUMBER H15155N  
 WAS EXP NO:

FILEPATH: PROD-ENG\MUELLER\ASYSUBMITTALS\H15155N

REV	ECR	DESCRIPTION	DATE	BY	CHKR

<b>Mueller Co.</b>	
UNLESS OTHERWISE NOTED	THIRD ANGLE PROJECTION
SURFACE PREPARATION:	REF. No. SCALE
BREAK CORNER(S) ---- .000	FULL
SURFACE FINISH -- 000 RMS	
TOLERANCE(S):	
LINEAR ----- ± .000	
ANGULAR ----- ± 0°00'	
DRFTR RWB 5/22/13	STK No:
CHKR	MAT'L:
ENGR	DESCR.
MGR	MARK II DRISEAL LLB ASS'Y
BY DATE	DWG NUMBER
	H15155N

TITLE TO AND OWNERSHIP OF THIS ENGINEERING DATA REMAINS IN Mueller Co. NO USE IS TO BE MADE OF THIS DATA EXCEPT AS SPECIFICALLY AUTHORIZED BY Mueller Co. ASSENT ON THE PART OF THE RECIPIENT TO THESE CONDITIONS IS PRESUMED

PER EST NO: DXXXX EST FIN WT = 0.0000 lbs