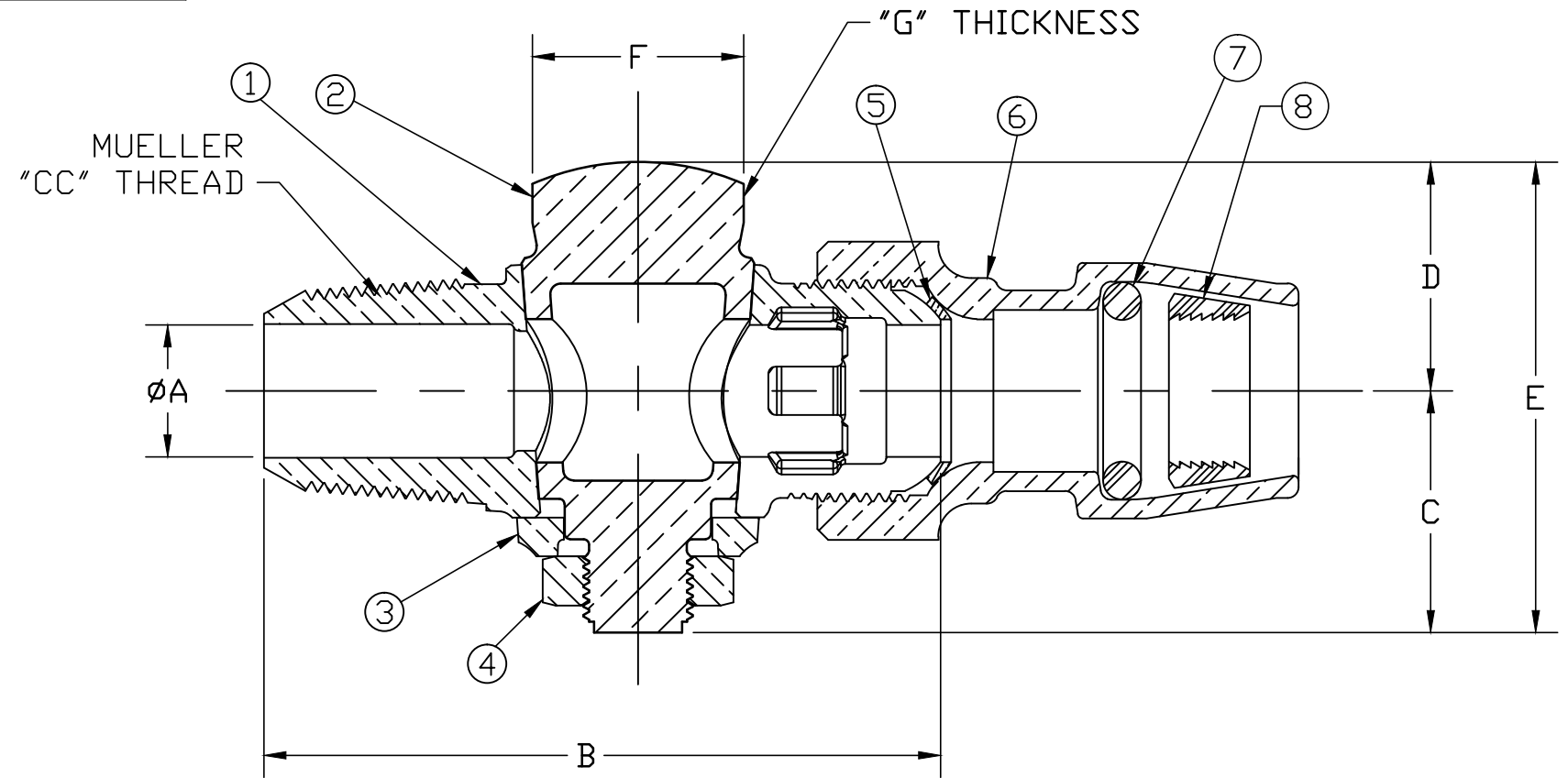


No.	DESCRIPTION	MATERIAL
1	BODY	CAST LOW LEAD BRASS ALLOY
2	KEY	CAST LOW LEAD BRASS ALLOY
3	KEY WASHER	CAST BRASS ASTM B62 ALLOY C83600
4	KEY NUT	CAST BRASS ASTM B62 ALLOY C83600
5	COPPER GASKET	COPPER SHEET ASTM B152 UNS C11000
6	INSTA-TITE BODY	CAST LOW LEAD BRASS ALLOY
7	O-RING	EP ASTM D2000
8	GRIP RING	CELCON M90 RED CF2001

SIZE	ØA	B	C	D	E	F	G
3/4	.75	3.84	1.38	1.30	2.68	1.20	.38
1	.92	4.61	1.46	1.41	2.87	1.48	.38



NOTE: ALL WETTED PARTS ARE LOW LEAD BRASS ALLOY

FILEPATH: PROD-ENG\MUELLER\ASYSUBMITTALS\H15006N

						DRFTR	RWB	5/29/13	<b>Mueller Co.</b>
						CHKR			
						ENGR			
						MGR			
									UNLESS OTHERWISE NOTED
									THIRD ANGLE PROJECTION
									SURFACE PREPARATION:
									BREAK CORNER(S) ---- .000
									SURFACE FINISH -- XX RMS
									TOLERANCE(S):
									LINEAR ----- ± .000
									ANGULAR ----- ± 0°00'
									REF. No.
									SCALE
									FULL
									STK No:
									MAT'L:
									DESCR.
									CORPORATION STOP LLB
									(CC THR'D × INSTA-TITE)
									DWG NUMBER
									H15006N

DWG NUMBER  
H15006N  
442-MRKTG

TITLE TO AND OWNERSHIP OF THIS ENGINEERING DATA REMAINS IN Mueller Co. NO USE IS TO BE MADE OF THIS DATA EXCEPT AS SPECIFICALLY AUTHORIZED BY Mueller Co. ASSENT ON THE PART OF THE RECIPIENT TO THESE CONDITIONS IS PRESUMED

REV	ECR	DESCRIPTION	DATE	BY	CHKR

PER EST NO: DXXXX EST FIN WT = 0.0000 lbs