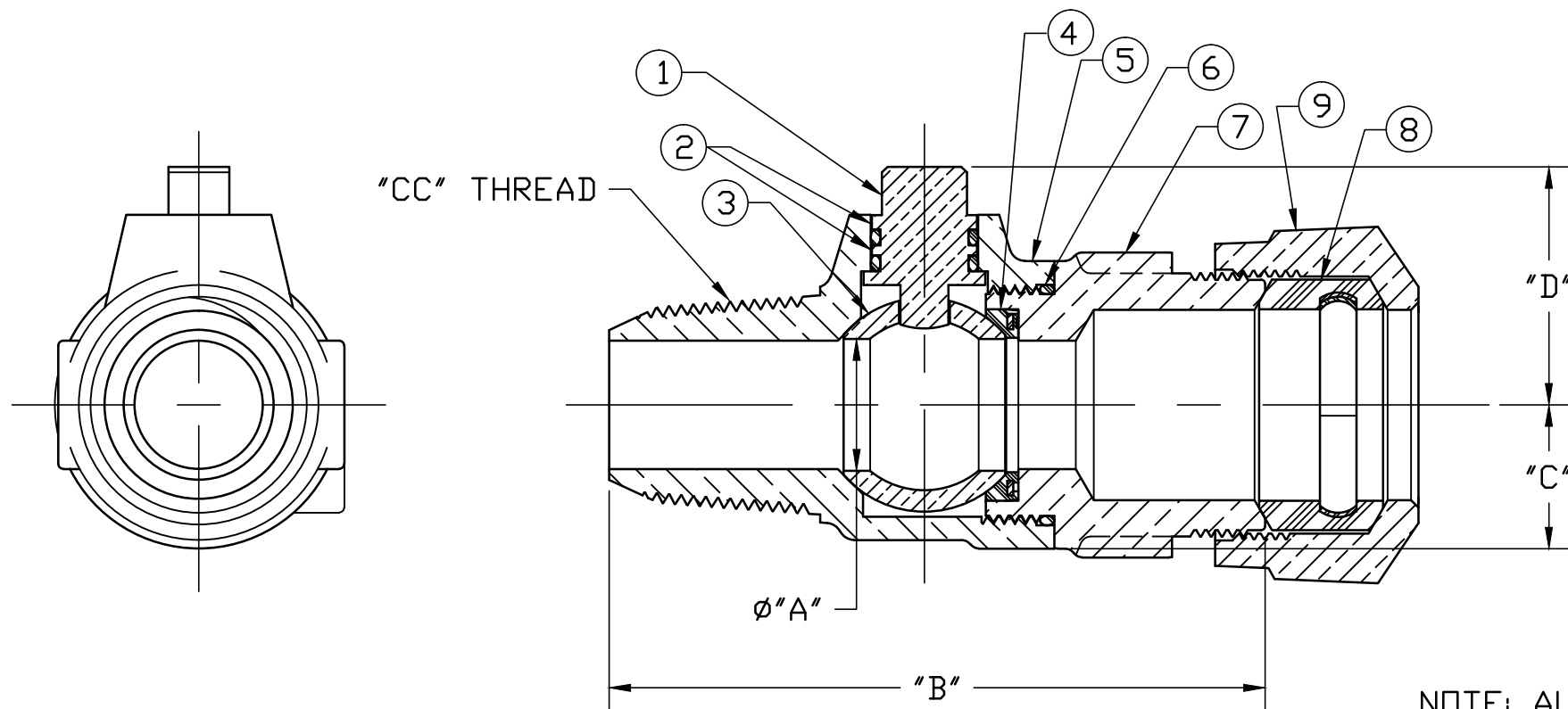


| No. | DESCRIPTION | MATERIAL |
|-----|---------------|----------------------------------|
| 1 | STEM | LOW LEAD BRASS ALLOY |
| 2 | O-RING | EPDM ASTM D2000 |
| 3 | BALL | CAST LOW LEAD BRASS ALLOY |
| 4 | GASKET - SEAL | NITRILE ASTM D2000 |
| 5 | BODY | CAST LOW LEAD BRASS ALLOY |
| 6 | O-RING | EPDM ASTM D2000 |
| 7 | END PIECE | CAST LOW LEAD BRASS ALLOY |
| 8 | CTS GSKT SUB | SBR ASTM D2000 -GSKT 410ss -BAND |
| 9 | CONNX NUT | CAST BRASS ASTM B62 ALLOY C83600 |



| SIZE | ØA | B | C | D |
|-------|------|------|------|------|
| 3/4 | .75 | 3.83 | .84 | 1.39 |
| 3/4x1 | .75 | 3.76 | .84 | 1.39 |
| 1 | 1.00 | 4.41 | 1.15 | 1.59 |

NOTE: ALL WETTED PARTS ARE LOW LEAD BRASS ALLOY

FILEPATH: PROD-ENG\MUELLER\ASYSUBMITTALS\B25009N

| | | | | | |
|---|-----|-------------|----------------------------|------------------------|------|
| DRFTR | RWB | 6/13/13 | | | |
| CHKR | | | | | |
| ENGR | | | | | |
| MGR | | | | | |
| | | | UNLESS OTHERWISE NOTED | THIRD ANGLE PROJECTION | |
| | | | SURFACE PREPARATION: | | |
| | | | BREAK CORNER(S) ---- .000 | | |
| | | | SURFACE FINISH -- XX RMS | REF. No. | |
| | | | TOLERANCE(S): | SCALE | |
| | | | LINEAR ----- ± .000 | | |
| | | | ANGULAR ----- ± 0°00' | | |
| | | | STK No: | | |
| | | | MAT'L: | | |
| | | | DESCR. | | |
| | | | BALL CORPORATION LLB VALVE | DWG NUMBER | |
| | | | ("CC" x 110 IPS) | B25009N | |
| REV | ECR | DESCRIPTION | DATE | BY | CHKR |
| PER EST NO: DXXXX EST FIN WT = 0.0000 lbs | | | | | |

DWG NUMBER
B25009N
442-MRKTG

TITLE TO AND OWNERSHIP OF THIS ENGINEERING DATA REMAINS IN Mueller Co. NO USE IS TO BE MADE OF THIS DATA EXCEPT AS SPECIFICALLY AUTHORIZED BY Mueller Co. ASSENT ON THE PART OF THE RECIPIENT TO THESE CONDITIONS IS PRESUMED