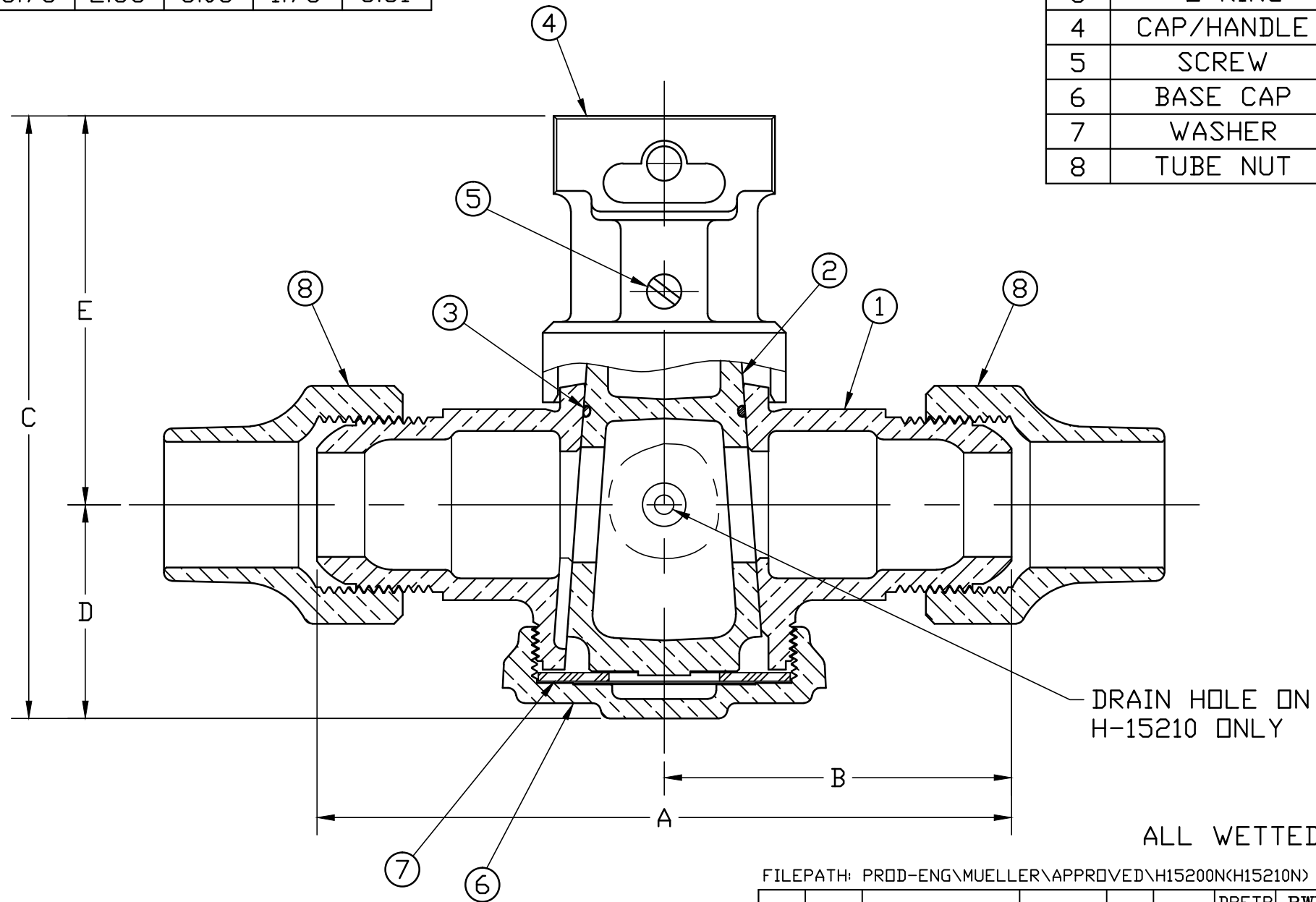



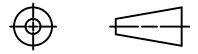
SIZE	A	B	C	D	E
1/2	4.38	2.19	3.78	1.31	2.47
3/4	5.00	2.50	4.34	1.54	2.80
1	5.75	2.88	5.06	1.75	3.31

No.	DESCRIPTION	MATERIAL
1	BODY	CAST LOW LEAD BRASS ALLOY
2	KEY	CAST LOW LEAD BRASS ALLOY
3	O-RING	RUBBER, ASTM D-2000 (EPDM)
4	CAP/HANDLE	CAST BRASS ASTM B62 ALLOY C83600
5	SCREW	BRASS ASTM B16 ALLOY C36000
6	BASE CAP	CAST LOW LEAD BRASS ALLOY
7	WASHER	POLYETHYLENE KP 701
8	TUBE NUT	CAST BRASS ASTM B62 ALLOY C83600



ALL WETTED PARTS ARE LOW LEAD BRASS ALLOY

FILEPATH: PROD-ENG\MUELLER\APPROVED\H15200N(H15210N)

						DRFTR	RWB	3/19/14			THIRD ANGLE PROJECTION 	
						CHKR						
						ENGR						
						MGR						
									UNLESS OTHERWISE NOTED	REF. No.	SCALE	
									SURFACE PREPARATION:		FULL	
									BREAK CORNER(S) ----- .000			
									SURFACE FINISH -- XX RMS			
									TOLERANCE(S):			
									LINEAR ----- ± .000			
									ANGULAR ----- ± 0°00'			
									STK No:			
									MAT'L:			
									DESCR.			
									H-15200N & H-15210N INVERTED LLB KEY CURB STOP			
									DWG NUMBER H15200N			
REV	ECR	DESCRIPTION	DATE	BY	CHKR							

TITLE TO AND OWNERSHIP OF THIS ENGINEERING DATA REMAINS IN Mueller Co. NO USE IS TO BE MADE OF THIS DATA EXCEPT AS SPECIFICALLY AUTHORIZED BY Mueller Co. ASSENT ON THE PART OF THE RECIPIENT TO THESE CONDITIONS IS PRESUMED

DWG NUMBER H15200N  
 WAS EXP NO: 44-MRKT