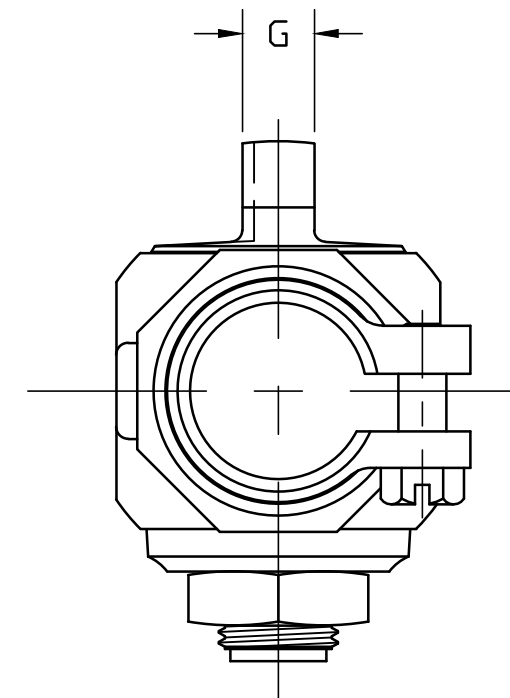
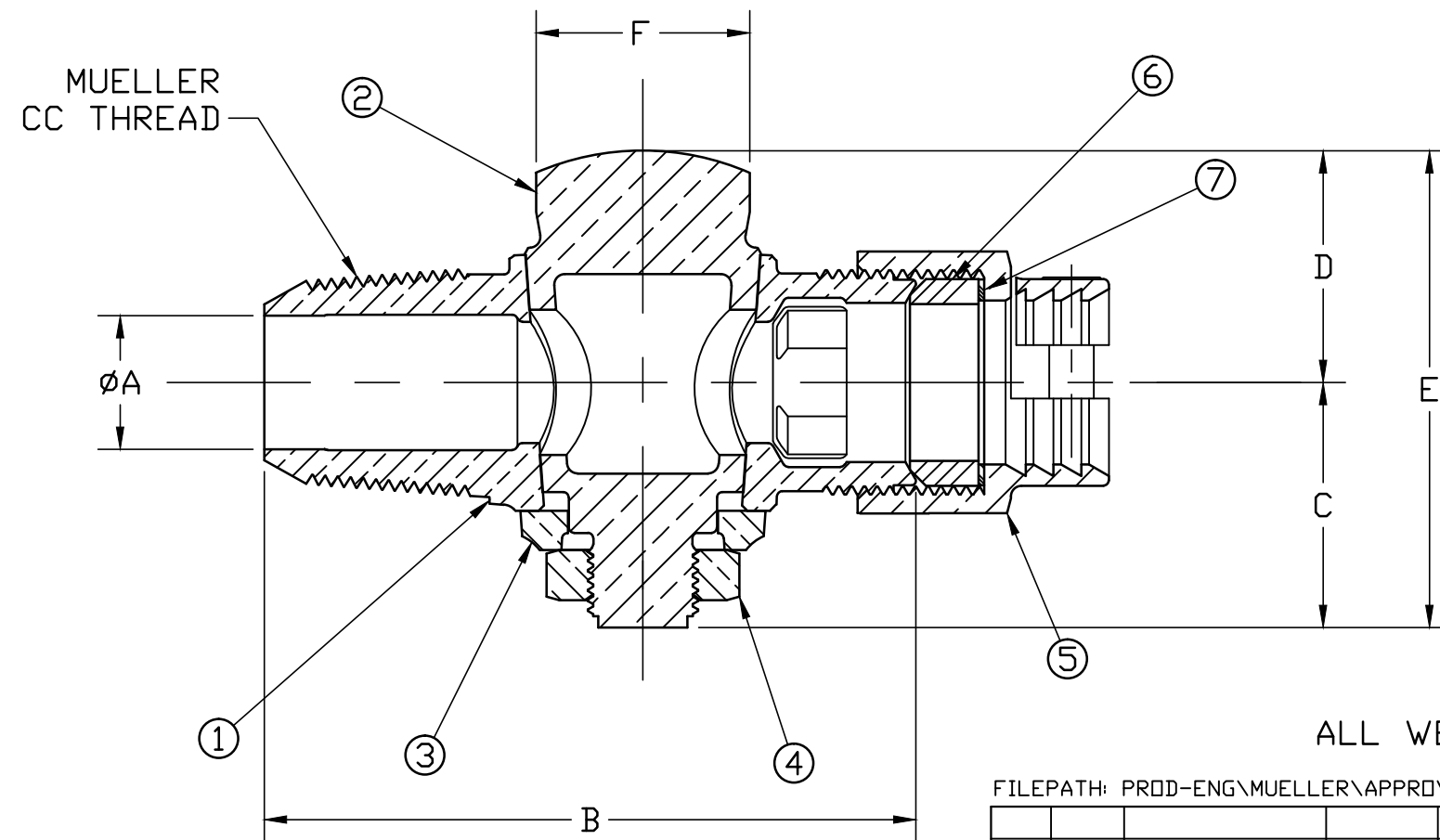


No.	DESCRIPTION	REQ'D	MATERIAL
1	BODY	1	CAST LOW LEAD BRASS ALLOY
2	KEY	1	CAST LOW LEAD BRASS ALLOY
3	KEY WASHER	1	CAST BRONZE ASTM B62 ALLOY C83600
4	KEY NUT	1	CAST BRONZE ASTM B62 ALLOY C83600
5	PJ CPLG NUT	1	CAST BRONZE ASTM B62 ALLOY C83600
6	PJ GASKET	1	ASTM D2000 NITRILE
7	PJ WASHER	1	POLYPROPYLENE

SIZE	ØA	B	C	D	E	F	G
3/4	.75	3.66	1.38	1.30	2.68	1.20	.38
3/4x1	.75	4.19	1.38	1.30	2.68	1.20	.38
1	.92	4.31	1.46	1.41	2.87	1.48	.38



ALL WETTED PARTS ARE LOW LEAD BRASS ALLOY

FILEPATH: PROD-ENG\MUELLER\APPROVED\P15008N

DRFTR	RWB	9/23/13	Mueller Co.	
CHKR				
ENGR				
MGR				
			UNLESS OTHERWISE NOTED	THIRD ANGLE PROJECTION
			SURFACE PREPARATION:	
			BREAK CORNER(S) ---- .000	
			SURFACE FINISH -- 000 RMS	REF. No.
			TOLERANCE(S):	SCALE
			LINEAR ----- ± .000	FULL
			ANGULAR ----- ± 0°00'	
			STK No:	
			MAT'L:	
			DESCR.	
			LLB CORPORATION STOP	DWG NUMBER
			CC x PJ CTS	P15008N

DWG NUMBER
P15008N
442-MRKTG

TITLE TO AND OWNERSHIP OF THIS ENGINEERING DATA REMAINS IN Mueller Co. NO USE IS TO BE MADE OF THIS DATA EXCEPT AS SPECIFICALLY AUTHORIZED BY Mueller Co. ASSENT ON THE PART OF THE RECIPIENT TO THESE CONDITIONS IS PRESUMED

REV	ECR	DESCRIPTION	DATE	BY	CHKR

PER EST NO: DXXXX EST FIN WT = 0.0000 lbs