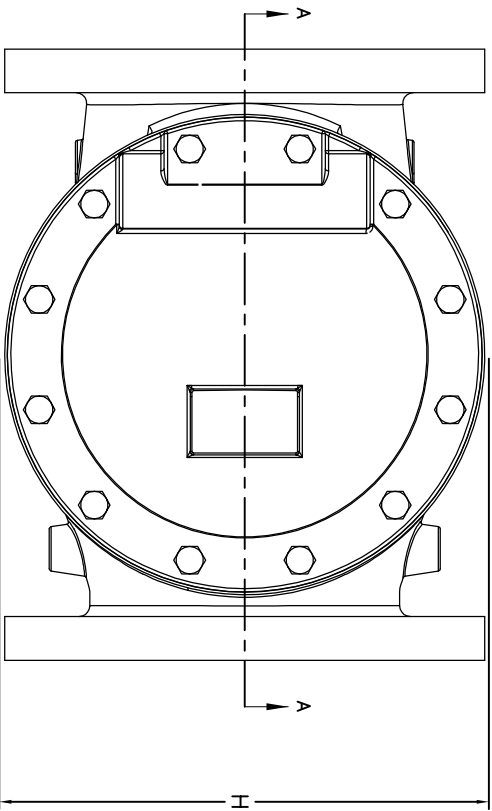
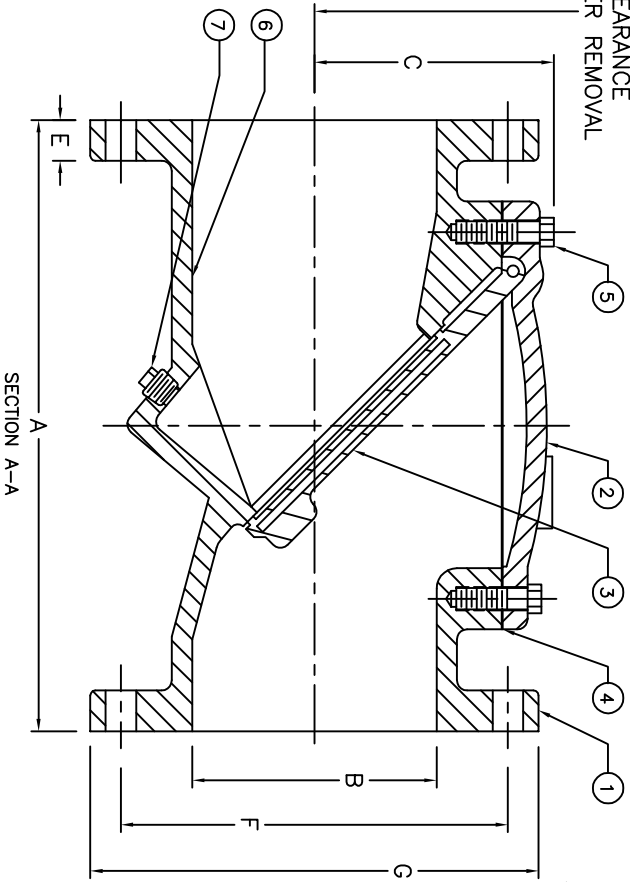


'D' CLEARANCE
FOR COVER REMOVAL



VALVE SIZE	A	B	C	D	E	F	G	H	BOLT SIZE	NO. OF BOLTS	PLUG SIZES
2	8.0	2.0	3.38	5.75	5/8	4.75	6.0	5.2	5/8	4	3/4" NPT
2-1/2	8.5	2.5	3.38	5.75	11/16	5.5	7.0	6.8	5/8	4	

3 to 16 SEE NOTE 2
18 to 24 SEE NOTE 3

ITEM	QTY	DESCRIPTION	MATERIAL	ASTM DESIGNATION
7	1	PLUG	DUCTILE IRON	ASTM A-536-GR 65-45-12
6	1	INTERIOR LINING	EPOXY	-
5	AR	BONNET BOLTS	STEEL	SAE GRADE 5 - ZINC PLATED
4	1	GASKET	RUBBER (BUNA N)	D2000 BK 807
3	1	DISC	STEEL/BUANA-N	ASTM-A36 / D2000 BK 807
2	1	BONNET	DUCTILE IRON	ASTM A-536-GR 65-45-12
1	1	BODY	DUCTILE IRON	ASTM A-536-GR 65-45-12

DATE	REVISIONS	BY	TITLE
03/11	ADDED SEE DRAWING NOTE	RR	
07/11	DIM. CHANGE IN COLUMN 'D' [EGR# 532]	AA	
11/11	ADDED DIMENSION 'H' & TOP VIEW [EGR# 581]	JC	
04/17	REMOVED '18'-24" SIZE VALVES FROM DWG	AA	

ISSUE NUM.	DATE	CHK'D BY:	DATE:	SCALE:
		RR	03/02/11	NONE
		DIMENSION:	INCHES	
2" TO 2-1/2" FIG. 851 CLASS 150 FLEX CHECK DWG. NO. MSS0644				

- NOTES:
 1- FLANGES ARE PER ANSI B16.1 CLASS 125/150 FLAT FACED.
 2- SEE DRAWING MSS0634 FOR 3" TO 16" DIMENSION.
 3- SEE DRAWING MS0657 FOR 18" TO 24" DIMENSION.

