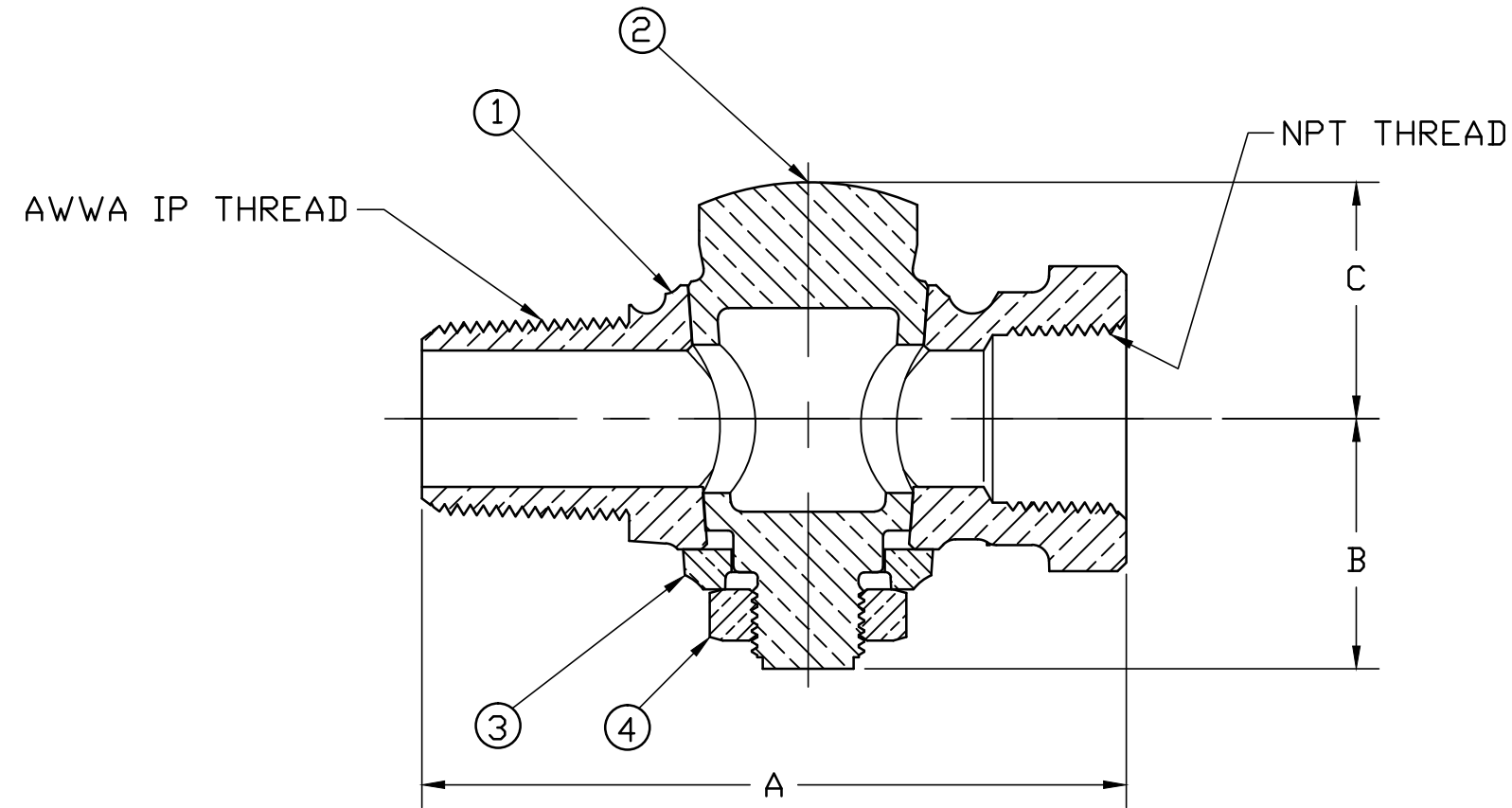


No.	DESCRIPTION	MATERIAL
1	BODY	CAST LOW LEAD BRASS ALLOY
2	KEY	CAST LOW LEAD BRASS ALLOY
3	KEY WASHER	CAST BRASS ASTM B62 ALLOY C83600
4	KEY NUT	CAST BRASS ASTM B62 ALLOY C83600



VALVE SIZE	A	B	C
1/2"	3.31	1.16	1.16
3/4"	3.88	1.38	1.30
1"	4.31	1.46	1.41
1-1/4"	5.39	2.00	1.80
1-1/2"	5.88	2.33	2.16
2"	7.00	2.47	2.36

ALL WETTED PARTS ARE LOW LEAD BRASS ALLOY

FILEPATH: PROD-ENG\MUELLER\ASYSUBMITTALS\H10046N

						DRFTR	RWB	8/27/13	Mueller Co.	THIRD ANGLE PROJECTION 	
						CHKR					
						ENGR					
						MGR					
							BY	DATE	UNLESS OTHERWISE NOTED	REF. No.	
									SURFACE PREPARATION:	SCALE	
									BREAK CORNER(S) ---- .000		
									SURFACE FINISH -- XX RMS		
									TOLERANCE(S):		
									LINEAR ----- ± .000		
									ANGULAR ----- ± 0°00'		
						STK No:			TITLE TO AND OWNERSHIP OF THIS ENGINEERING DATA REMAINS IN Mueller Co. NO USE IS TO BE MADE OF THIS DATA EXCEPT AS SPECIFICALLY AUTHORIZED BY Mueller Co. ASSENT ON THE PART OF THE RECIPIENT TO THESE CONDITIONS IS PRESUMED.		
						MAT'L:			REV ECR DESCRIPTION DATE BY CHKR		
						DESCR.	GROUND KEY LLB CORPORATION STOP (AWWA IP x FIP)				DWG NUMBER H10046N
						PER EST NO: DXXXX	EST FIN WT = 0.0000 lbs				

DWG NUMBER
H10046N
442-MRKTG