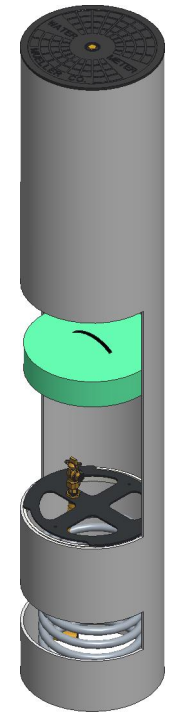
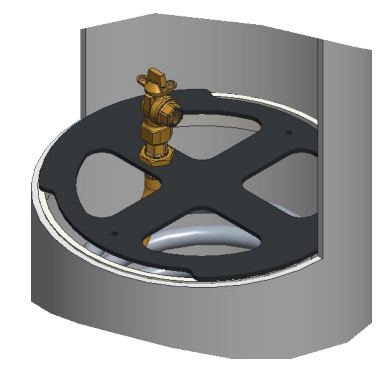
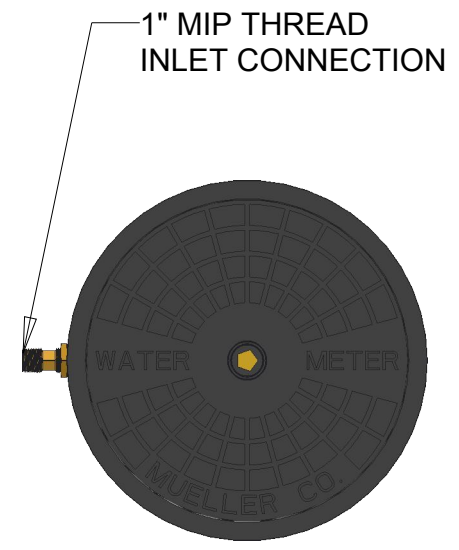
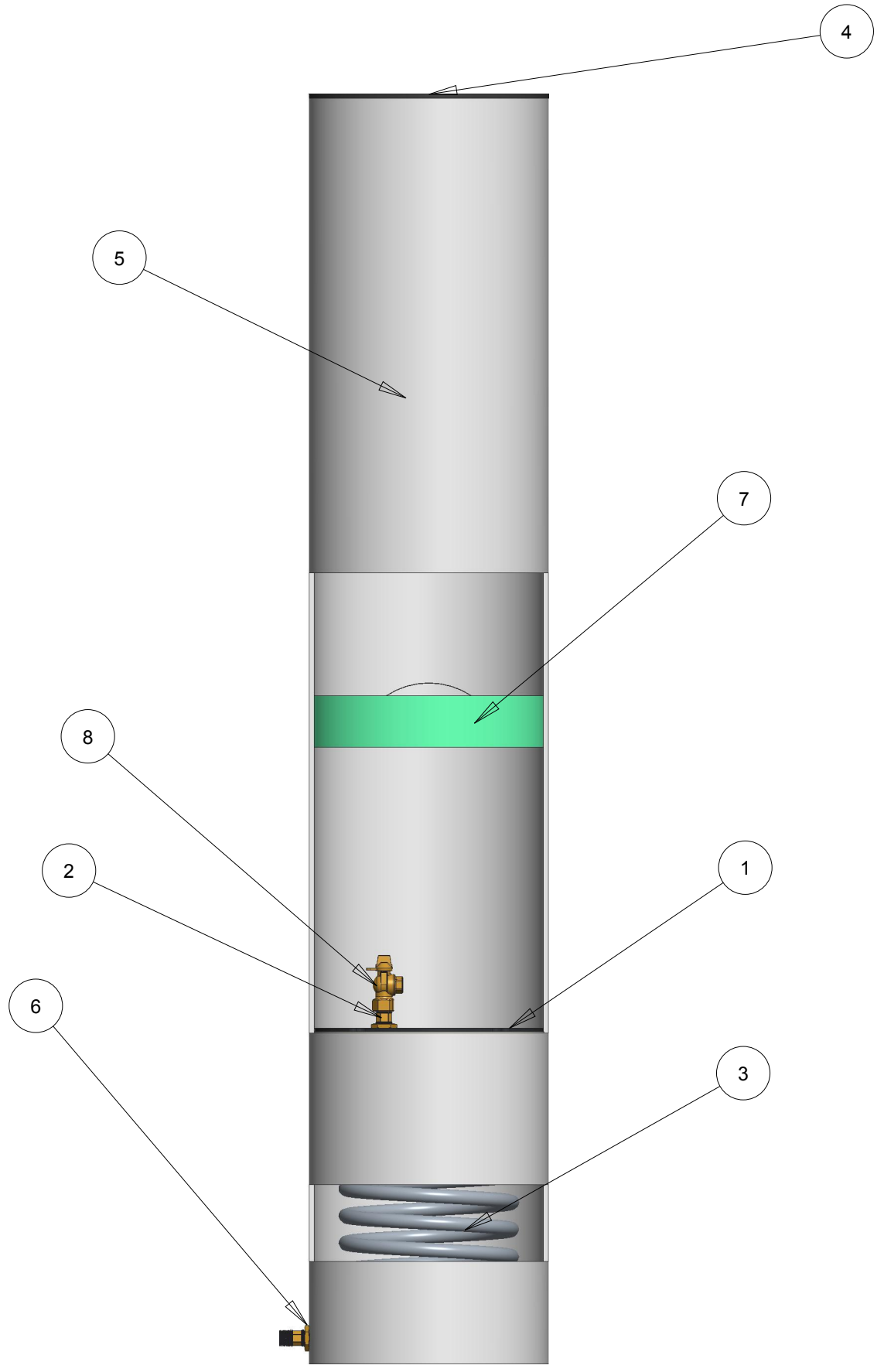


ITEM NO	PART NUMBER	QTY	DESCRIPTION
1	548411	1	18" DIA STEEL PM PLATFORM
2	700014	2	1" HOSE CONNECTOR
3	700046-1899	1	1" COIL PART
4	780069	1	18" DIA CENTER LOCKING LID (OPTIONAL)
5	780094-1899	1	SHELL SUB ASSEMBLY
6	790010	4	1" HEX NUT
7	790153	1	18" INSULATION PAD (OPTIONAL)
8	333B24285RN	1	1" FIP X 3/4" FIP REDUCED PORT BALL VALVE



330PM1899--BLN

DR. BY	BBF	4/3/17	UNLESS OTHERWISE NOTED	THIRD ANGLE PROJECTION	C.B. NO.
CHKR			BREAK CAST CORNER(S)---		
ENGR			BREAK MACH CORNER(S)---	PURCH.	FINISH
MGR			TOLERANCES	REF. NO.	PATT. NO.
MFG			UNLESS OTHERWISE NOTED	SCALE	NONE
TOOL			LINEAR	ANGULAR	STK. NO.
FDRY			±	±	
MAT'L:					
			DESCR.	NUMBER	
			1" PRESSURE MONITORING METER PIT 18" DIA X 99" DEPTH LOW LEAD BRASS	330PM1899--BLN	