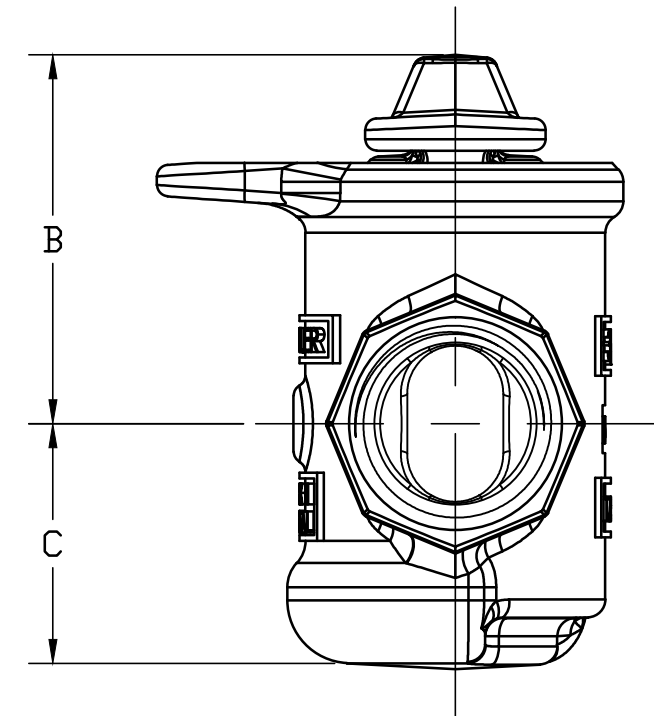
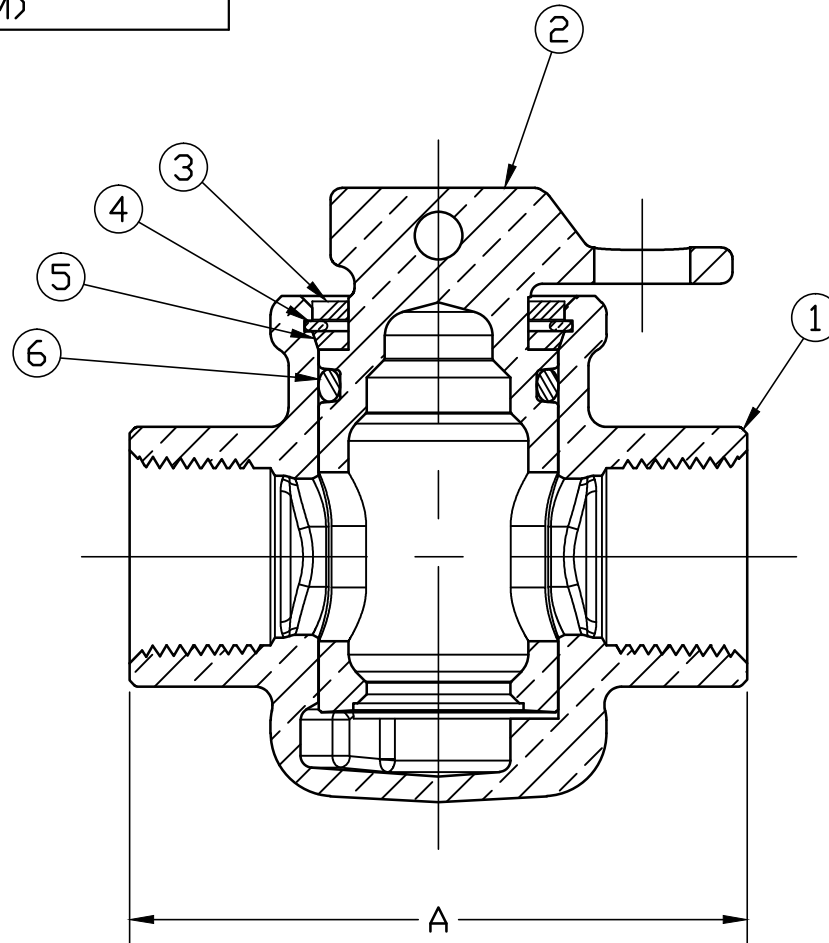


ITEM	DESCRIPTION	MATERIAL DESCRIPTION
1	BODY	CAST LOW LEAD BRASS ALLOY
2	KEY	CAST LOW LEAD BRASS ALLOY
3	TOP SEAL	ASTM D2000 (NITRILE)
4	RETAINING RING	BRONZE ASTM B103 ALLOY C52100
5	THRUST WASHER	CELCON M90
6	O-RING	ASTM D2000 (EPDM)
*	O-RING	ASTM D2000 (EPDM)

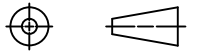
* - PORT O-RING ON KEY (NOT SHOWN)

SIZE	A	B	C
3/4"	3.219	1.920	1.250
1"	3.812	2.094	1.422



ALL WETTED PARTS ARE LOW LEAD BRASS ALLOY

FILEPATH: PROD-ENG\MUELLER\ASYSUBMITTALS\H10200N

						DRFTR	RWB	6/26/17	Mueller Co.		UNLESS OTHERWISE NOTED SURFACE PREPARATION: BREAK CORNER(S) ---- .000 SURFACE FINISH -- XX RMS TOLERANCE(S): LINEAR ----- ± .000 ANGULAR ----- ± 0°00'		THIRD ANGLE PROJECTION  REF. No. SCALE NONE	
									BY	DATE				
									STK No:					
									MAT'L:					
									DESCR.		LLB MARK II DRISEAL VALVE (FIP x FIP)			
													DWG NUMBER	H10200N
									PER EST NO: DXXXX		EST FIN WT = 0.0000 lbs			

DWG NUMBER
H10200N
442-MRKTG

TITLE TO AND OWNERSHIP OF THIS ENGINEERING DATA REMAINS IN Mueller Co. NO USE IS TO BE MADE OF THIS DATA EXCEPT AS SPECIFICALLY AUTHORIZED BY Mueller Co. ASSENT ON THE PART OF THE RECIPIENT TO THESE CONDITIONS IS PRESUMED