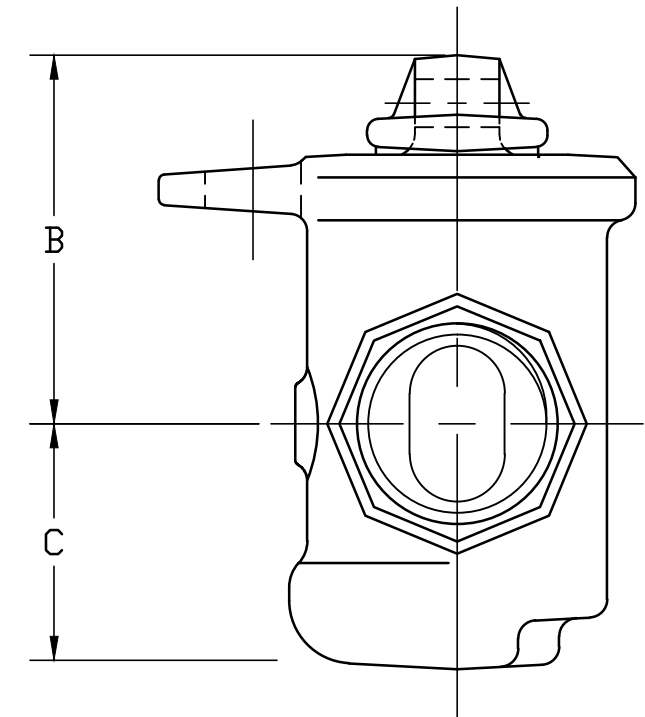
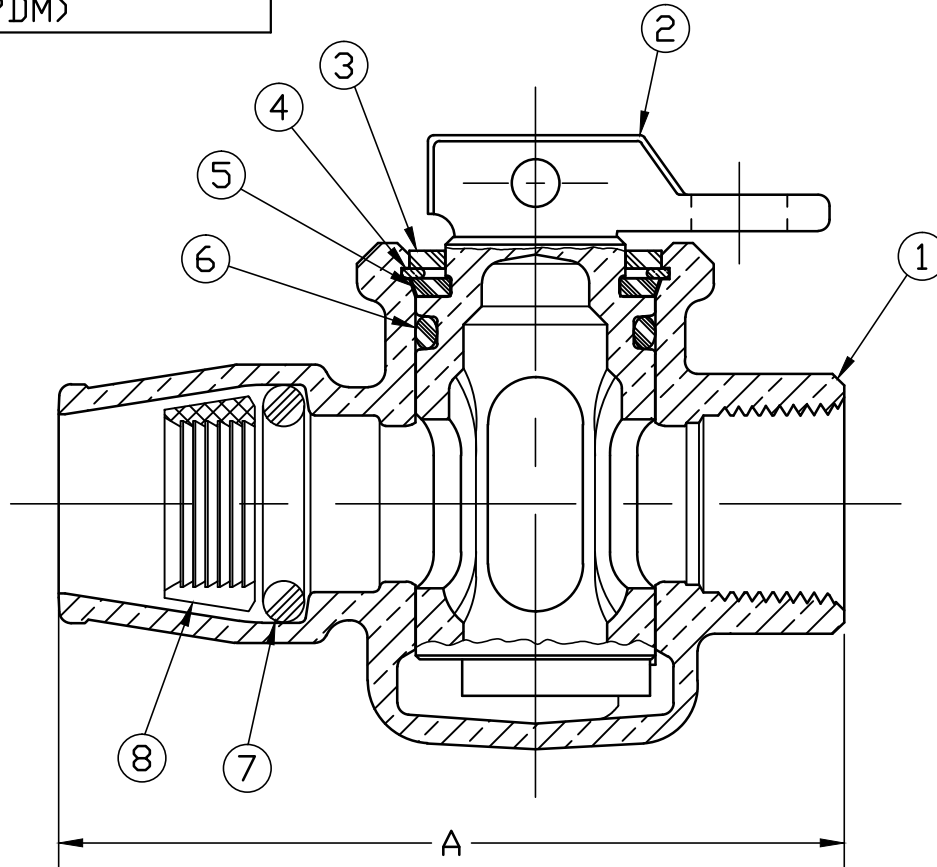


ITEM	DESCRIPTION	MATERIAL DESCRIPTION
1	BODY	CAST LOW LEAD BRASS ALLOY
2	KEY	CAST LOW LEAD BRASS ALLOY
3	TOP SEAL	ASTM D2000 (NITRILE)
4	RETAINING RING	BRONZE ASTM B103 ALLOY C52100
5	THRUST WASHER	CELCON M90
6	O-RING	ASTM D2000 (EPDM)
7	O-RING	ASTM D2000 (EPDM)
8	GRIP RING	CELCON M90 (RED)
*	O-RING	ASTM D2000 (EPDM)

SIZE	A	B	C
3/4"	4.094	1.920	1.250

* - PORT ORING ON KEY (NOT SHOWN)



ALL WETTED PARTS ARE LOW LEAD BRASS ALLOY

FILEPATH: PROD-ENG\MUELLER\ASYSUBMITTALS\H15197N

						DRFTR	RWB	6/26/17	Mueller Co.	UNLESS OTHERWISE NOTED THIRD ANGLE PROJECTION SURFACE PREPARATION: BREAK CORNER(S) ---- .000 SURFACE FINISH -- XX RMS TOLERANCE(S): LINEAR ----- ± .000 ANGULAR ----- ± 0°00'	REF. No.	SCALE NONE
						CHKR						
						ENGR						
						MGR						
									BY	DATE		
									STK No:			
									MAT'L:			
									DESCR.	LLB MARK II ORISEAL VALVE (INSTA-TITE x FIP)		DWG NUMBER H15197N
									PER EST NO: DXXXX	EST FIN WT = 0.0000 lbs		

DWG NUMBER
H15197N
442-MRKTG

TITLE TO AND OWNERSHIP OF THIS ENGINEERING DATA REMAINS IN Mueller Co. NO USE IS TO BE MADE OF THIS DATA EXCEPT AS SPECIFICALLY AUTHORIZED BY Mueller Co. ASSENT ON THE PART OF THE RECIPIENT TO THESE CONDITIONS IS PRESUMED