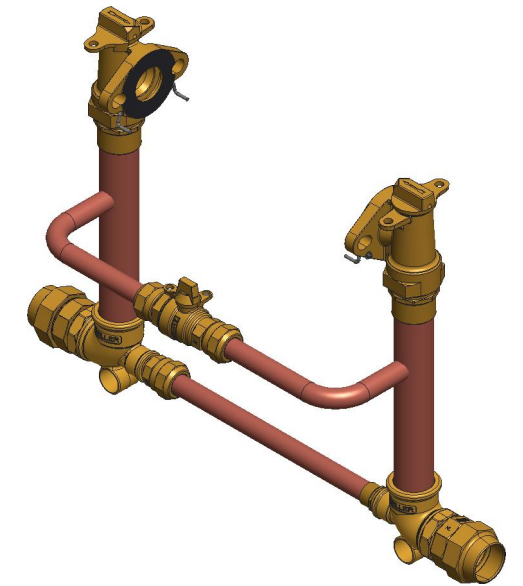
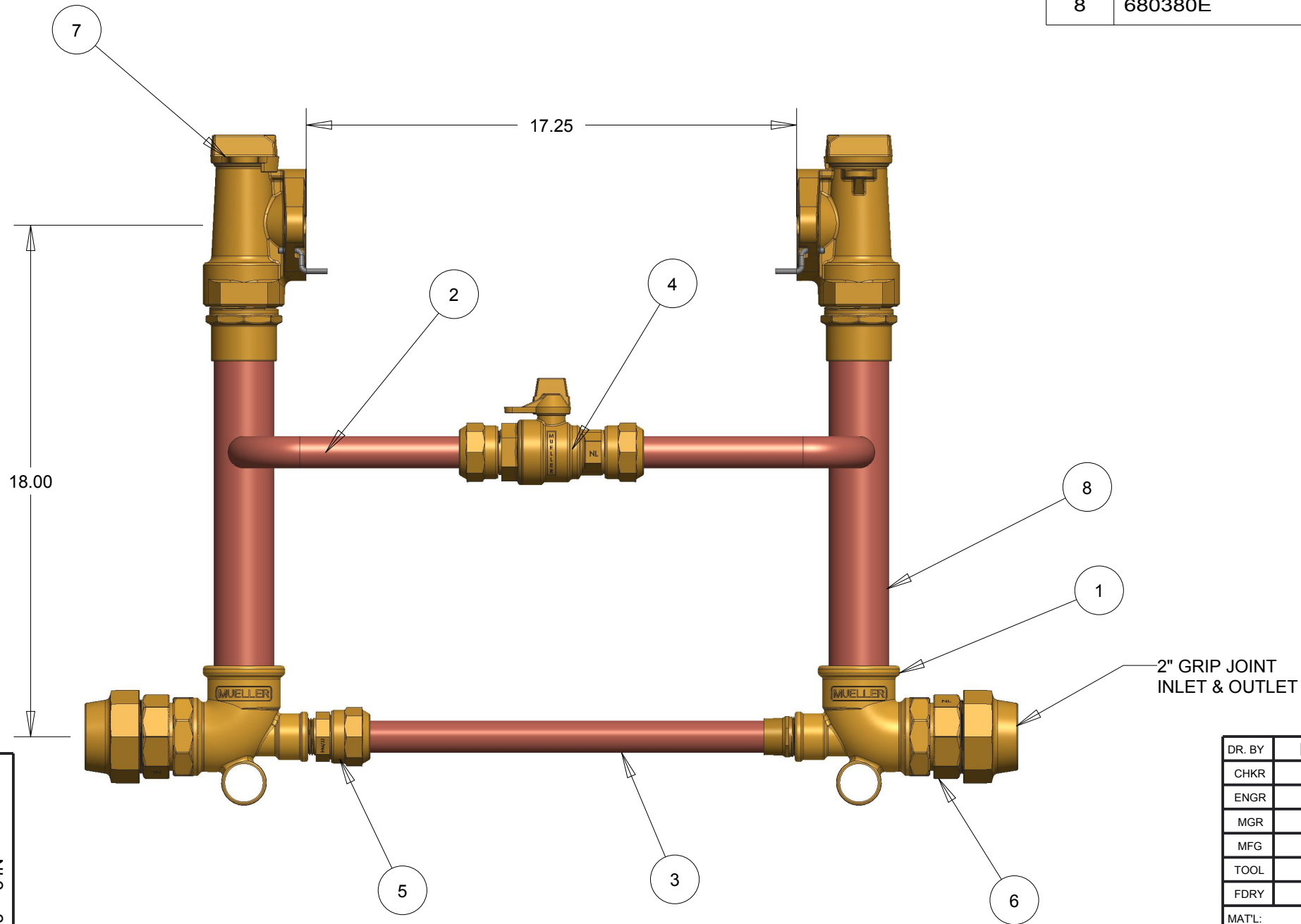


ITEM NO	PART NUMBER	QTY	DESCRIPTION
1	530146	2	TEE (2" FIP X 2" SOLDER X 1" FIP)
2	534782	2	1" HIGH BYPASS TUBING
3	681558	1	TIE BAR SUB ASSEMBLY
4	330B25146N	1	1" INLINE BALL VALVE W/ 110 COMP. BOTH ENDS
5	330H15428N	1	1" MIP X 1" CTS COMPRESSION TAILPIECE
6	550G15428N	2	2" GRIP JOINT X MIP THREADS
7	550H1428601N	2	2" ANGLE METER STOP
8	680380E	2	RISER SUB ASSEMBLY



OPTION CODE: 34
 *ANGLE METER STOP ON INLET & OUTLET
 *HIGH BY-PASS
 *G15428N INSTALLED ON INLET & OUTLET

DR. BY	BBF	7/25/17	UNLESS OTHERWISE NOTED		THIRD ANGLE PROJECTION		C.B. NO.
CHKR			BREAK CAST CORNER(S)---				
ENGR			BREAK MACH CORNER(S)---		PURCH.	FINISH	PATT. NO.
MGR			TOLERANCES				
MFG			UNLESS OTHERWISE NOTED				
TOOL			LINEAR	ANGULAR	REF. NO.	SCALE	
FDRY			±	±	STK. NO.	NONE	

MAT'L:		
	DESCR. 2" COPPER METER SETTER 18" RISER HEIGHT LOW LEAD BRASS	NUMBER 106H1423----34N

106H1423----34N