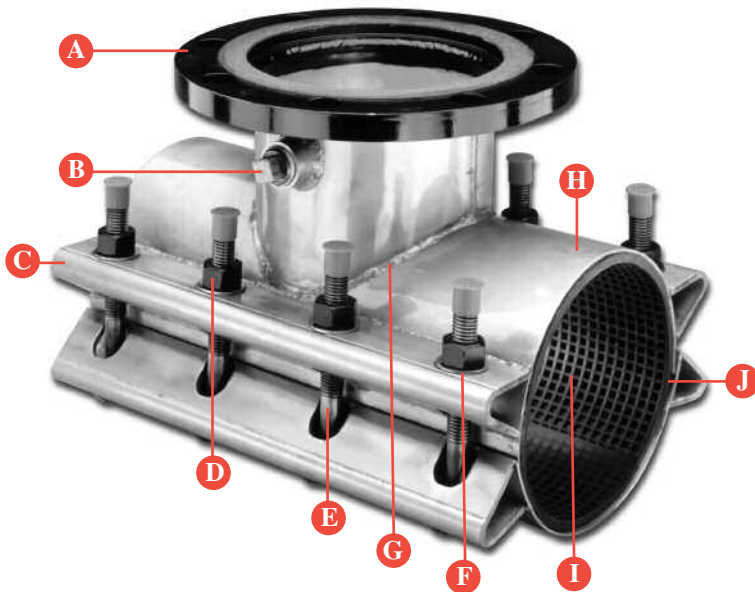


MUELLER® Stainless Steel Tapping Sleeve 4"-24"

Corrosion resistance / High pressure sealing



A. 304 Stainless Steel, Carbon Steel or Ductile Iron Flanges

ANSI B16.1, Class 125 drilling with a machined centering recess for tapping valves in accordance with MSS-SP 60. Fully machined flange face for precise alignment of gate valve and drilling machine. Carbon steel and ductile iron flanges are factory-coated with a water base enamel for corrosion protection.

B. Test Plug

3/4" NPT brass plug for pressure testing is standard. Optional stainless steel plug available. Plug has a square head for easy removal and installation.

C. Side Bars

Heavy gauge 304L stainless steel construction for maximum bending resistance. All side bars are drop-in bolt design for ease of installation.

D. Nuts

Heavy hex 304 stainless steel.

E. Bolts

Bolts are 304 stainless steel, coated with an anti-galling compound. Rolled threads facilitate spin assembly of nuts.

F. Washers

304 stainless steel washers prevent galling and facilitate tightening.

G. Welding

Welds are continuous bead (MIG), utilizing state-of-the-art robotic welding equipment. Robotic welding provides a consistently superior weld versus the manual method.

H. Shell

The shell is plasma cut to exacting tolerances. 304L stainless steel is low carbon to minimize carbide precipitation corrosion. The entire sleeve is fully passivated (not just the weld sections) to maintain optimum corrosion resistance.

I. Gasket

Provides full 360° seal. Made of virgin NBR (R78) material, the "waffle" design provides an optimal watertight seal. An integral sealing ring with two concentric raised surfaces surrounds the outlet (at the base of the pipe), which enhances high pressure sealing capability.

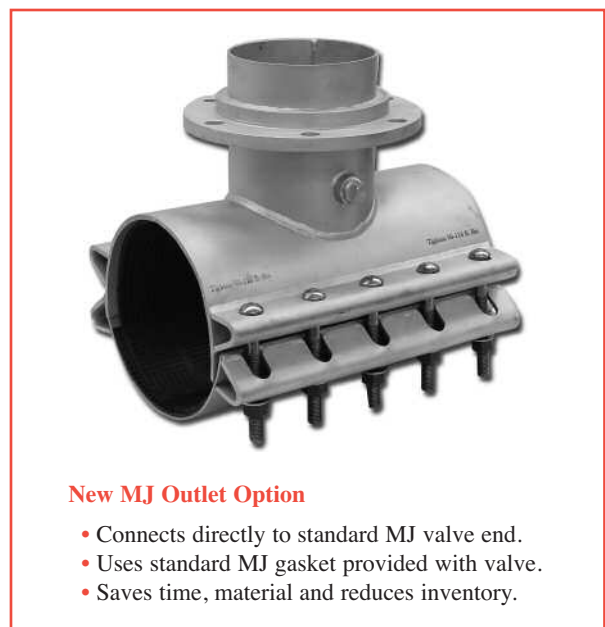
J. Integral Gap Bridging

Unique design eliminates the need for separate gap bridges and makes installation easier. This design reduces deformation of the bridge at high torques and aids in the assembly of the sleeve.

High Pressure Sealing

250 psig 4"-12"
200 psig 14"-24"

NSF 61 Certified



New MJ Outlet Option

- Connects directly to standard MJ valve end.
- Uses standard MJ gasket provided with valve.
- Saves time, material and reduces inventory.

The following are standard sleeve ranges. Other ranges are available by contacting Mueller Customer Service at 800-423-1323.

Sleeve O.D. Range

Nominal Pipe Size	Outlet Flange	Sleeve O.D. Range (inches)
4"	4"	4.50-4.90
6"	4",6"	6.59-6.99
		6.89-7.30
		7.10-7.50
		7.40-7.80
8"	4",6"	7.90-8.30
	4",6",8"	8.62-9.06
		9.04-9.45
		9.20-9.60
10"	4",6",8"	9.90-10.30
		10.73-11.13
		11.05-11.45
		11.70-12.10
12"	4",6",8",10",12"	12.00-12.40
		12.50-12.90
		13.16-13.56
		13.60-14.09
14"	4",6",8",10",12"	14.10-14.58
		15.25-15.65
		15.60-16.00
		16.38-16.73
16"	4",6",8",10",12"	16.48-16.88
		17.40-17.80
		17.54-17.94
		17.85-18.25
18"	4",6",8",10",12"	18.15-18.55
		18.60-19.00
		19.30-19.70
		19.70-20.10
20"	4",6",8",10",12"	21.40-21.80
		21.90-22.30
		22.30-22.70
24"	4",6",8",10",12"	23.30-23.70
		23.80-24.10
		25.60-26.00

Dimensions

Size	Outlet Flange		Sleeve			Bolts Per Side		
	Main	Outlet	Dimensions (inches) [†]		Dimensions (inches)			
			A	B	C	D	E	F
4"	4"		5.0315	.25	7.00	15	4.50	4
6"	4"		5.0315	.25	7.50	15	4.50	4
6"	6"		7.0315	.31	8.00	15	6.50	4
8"	4"		5.0315	.25	8.50	15	4.50	4
8"	6"		7.0315	.31	9.00	15	6.50	4
8"	8"		9.0315	.31	9.50	18	8.50	6
10"	4"		5.0315	.25	10.00	15	4.50	4
10"	6"		7.0315	.31	10.50	15	6.50	4
10"	8"		9.0315	.31	11.00	18	8.50	6
10"	10"		11.0315	.31	11.50	24	10.50	8
12"	4"		5.0315	.25	12.00	15	4.50	4
12"	6"		7.0315	.31	12.00	15	6.50	4
12"	8"		9.0315	.31	12.00	18	8.50	6
12"	10"		11.0315	.31	12.00	24	10.50	8
12"	12"		13.0315	.31	12.00	30	12.50	8
14"	4"		5.0315	.25	13.63	15	4.50	4
14"	6"		7.0315	.31	13.63	15	6.50	4
14"	8"		9.0315	.31	13.63	18	8.50	6
14"	10"		11.0315	.31	13.63	24	10.50	8
14"	12"		13.0315	.31	13.63	30	12.50	8
16"	4"		5.0315	.25	14.59	15	4.50	4
16"	6"		7.0315	.31	14.59	15	6.50	4
16"	8"		9.0315	.31	14.59	18	8.50	6
16"	10"		11.0315	.31	14.59	24	10.50	8
16"	12"		13.0315	.31	14.59	30	12.50	8
18"	4"		5.0315	.25	16.00	15	4.50	4
18"	6"		7.0315	.31	16.00	15	6.50	4
18"	8"		9.0315	.31	16.00	18	8.50	6
18"	10"		11.0315	.31	16.00	24	10.50	8
18"	12"		13.0315	.31	16.00	30	12.50	8
20"	4"		5.0315	.25	16.88	15	4.50	4
20"	6"		7.0315	.31	16.88	15	6.50	4
20"	8"		9.0315	.31	16.88	18	8.50	6
20"	10"		11.0315	.31	16.88	24	10.50	8
20"	12"		13.0315	.31	16.88	30	12.50	8
24"	4"		5.0315	.25	19.00	24	4.50	8
24"	6"		7.0315	.31	19.00	24	6.50	8
24"	8"		9.0315	.31	19.00	24	8.50	8
24"	10"		11.0315	.31	19.00	24	10.50	8
24"	12"		13.0315	.31	19.00	30	12.50	10

How to determine a Mueller® Tapping Sleeve Part Number

Select the appropriate numbers from the chart.

Example:

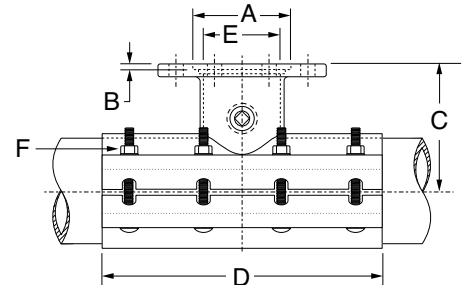
Pipe Size	Outlet Size	Model No.	Flange Material	Maximum O.D. Range
06	06	H304*	SS**	0750

Resulting Part No. 0606H304SS0750

*Model H304 is constant for all Mueller® Stainless Steel Tapping Sleeves listed here.

**SS=stainless steel flange, CS=carbon steel flange, DI=ductile iron flange
MJ=stainless steel MJ gland and pipe extension welded in place

[†]With MJ option, this flange is replaced by an integral SS outlet pipe extension and MJ gland welded permanently in place allowing the sleeve to bolt directly to the outlet of any standard MJ valve. Dimensions for MJ option are compatible with standard MJ connections, and A and B dimensions in chart do not apply.



Main Office — Decatur, IL
Water Division: 800-423-1323
www.muellercompany.com

Canada — Mueller Canada Inc., Barrie, Ontario 705-719-9965

All products must be installed and maintained in accordance with applicable instructions and/or standards.