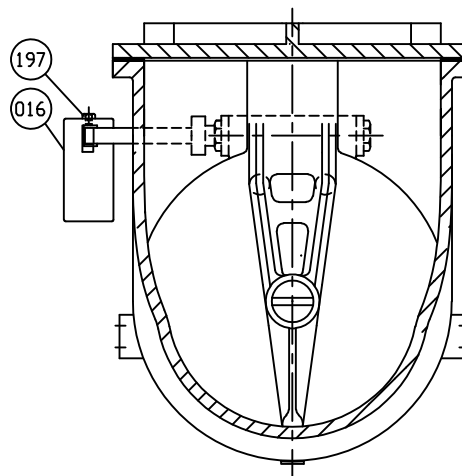
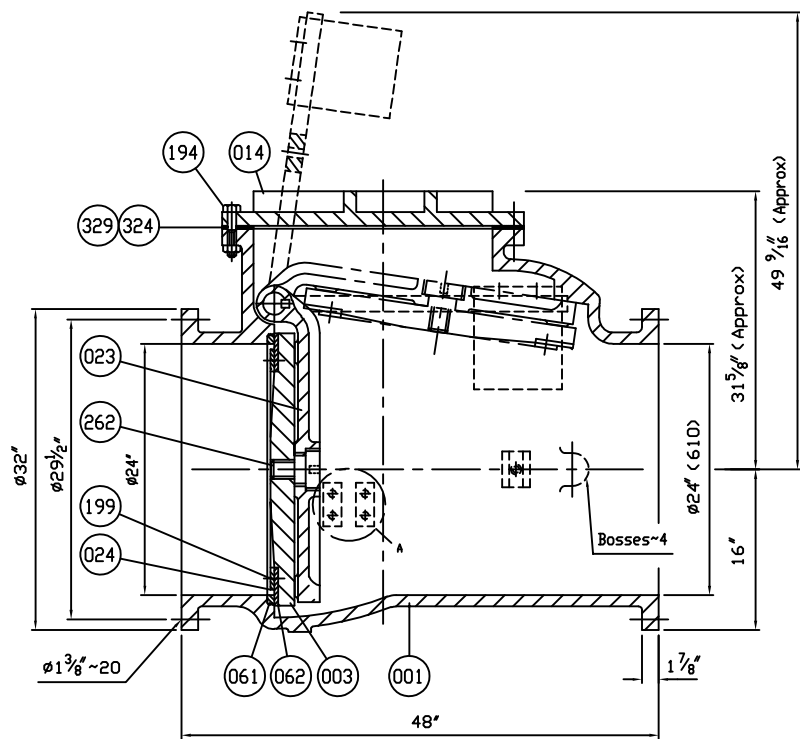
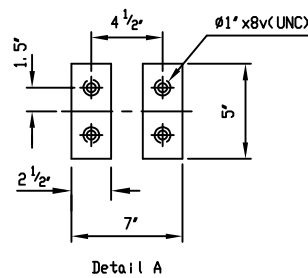
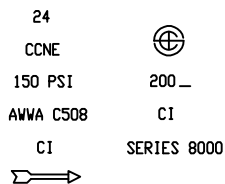


Marking



COVER BOLTS/NUTS		
TYPE	MATERIAL	✓
STANDARD	STEEL/ZINC	
S1	304 STN. STEEL	
S3	316 STN. STEEL	

Remark - Flanged dimensions follow ANSI, B16.1 CL. 125

QTY	DESCRIPTION	MATERIAL	ASTM DESIGNATION	QTY
1	Retaining Plug	Brass	B 21	1
2	D-Ring	Rubber (Buna N)	D 2000 BK 707	2
1	Cover D-Ring	Rubber (Buna N)	D 2000 BK 807	1
2	Gasket	Rubber (Buna N)	D 2000 BK 807	2
1	Cover Gasket	Rubber (Buna N)	D 2000 BK 807	1
1	Disc Bolt	Stainless Steel	A 276 Type 304	1
1	Seat Holder Bolt	Stainless Steel	A 276 Type 304	1
2	Weight Bolt	Zinc Coated Steel	A 307 Grade B	2
1	Cover Bolt & Nut	See Table	See Table	1
1	Plug Ø1/2"	Stainless Steel	A 276 Type 304	1
1	Key	Stainless Steel	A 276 Type 304	1
1	Hinge Pin	Stainless Steel	A 276 Type 304	1
1	Weight Arm	Ductile Iron	A 536 Gr. 65-45-12	1
1	Seat Nut	Brass	B 21	1
1	Disc Seat Ring	Rubber (Buna N)	D 2000 BK 807	1
1	Body Seat Ring	Bronze	B 62	1
1	Seat Holder	Ductile Iron	A 536 Gr. 65-45-12	1
1	Weight	Cast Iron	A 126 Class B	1
1	Arm	Ductile Iron	A 536 Gr. 65-45-12	1
1	Cover	Cast Iron	A 126 Class B	1
1	Disc	Cast Iron	A 126 Class B	1
1	Body	Cast Iron	A 126 Class B	1

MATERIAL LIST			
HYDRO SHELL		300	PSI.
HYDRO VALVE SEAT		150	PSI.
HYDRO BACK SEAT		—	PSI.
AIR SEAT		—	PSI.
STEAM		—	PSI.
TEST PRESSURE			
WORKING PRESSURE		150	PSI.



SCALE	DR. JON COLPAN	DATE 10/20/10	REF. DWG.
N.T.S.	CHK.	APP.	E.C.N. USA1325E
TITLE			
SIZE 24" SWING CHECK VALVE AWWA C508 BRONZE BODY SEAT RING & BUNA N DISC SEAT RING WITH ONE LEVER AND WEIGHT			
TYPE:	8001AB1LW	DWG NO.	M80011
SEE TABLE FOR BOLTING SPECS.			REV. 4

REVISION 1, CHANGED ITEM 166 MTRL. TYPE FROM MALLEABLE IRON A47 TO, UJC, 03/08/11, ECR# 456
REVISION 3, ADDED COVER O-RING TO MATERIAL TABLE AND REMOVED PAINT NOTE, AA, 11/28/17

REVISION 2, ADDED BOLTING TABLE TO DWG, AA, 04/29/13
REVISION 4. UPDATED NEW LOGOS, TT/JL, 07/19/19