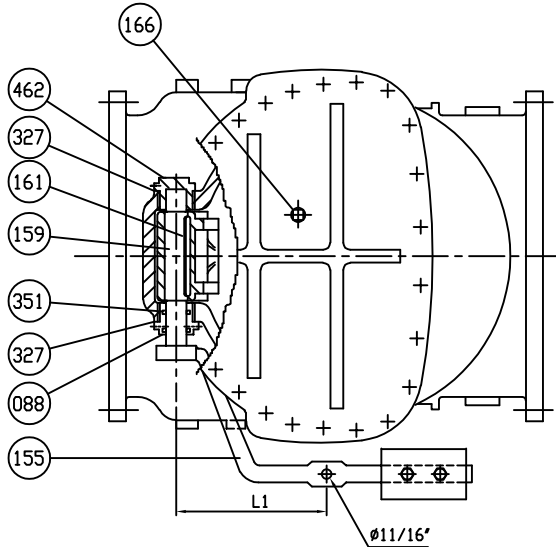


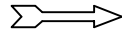
DS01 ISSUED : 240640 REVISED: -USA1326B->ADD THREAD UNC



Marking

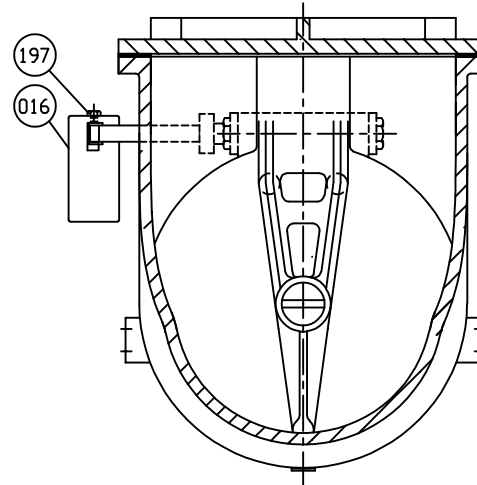
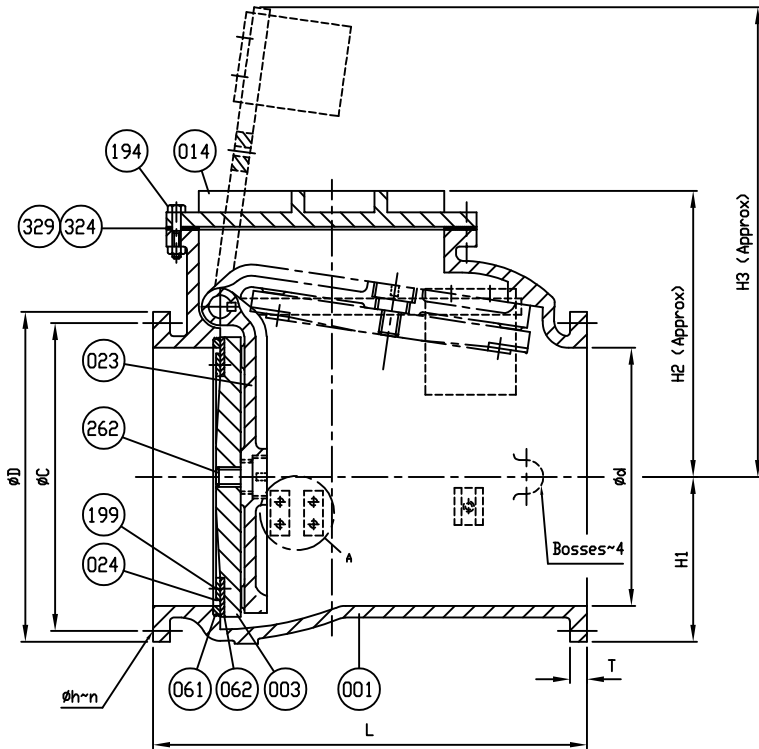
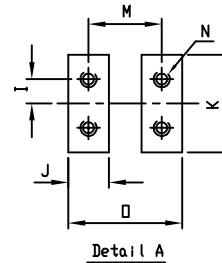
SIZE (INCH)
 CCNE
 150 PSI
 AWWA C508
 CI

200-
 CI
 SERIES 8000



SIZE ϕd	L	ANSI B16.1 CL. 125					H1	H2	H3	L1	I	J	K	M	N	\square
		ϕD	ϕC	ϕh	n	T										
30	52 1/2	38 3/4	36	1 3/8	28	2 1/8	19 3/8	36 3/8	62 5/8	27 3/4	2 1/2	3 1/8	7 1/2	5 1/2	5/8 x 11 v (UNC)	8 1/16
36	60 1/2	46	42 3/4	1 5/8	32	2 3/8	23	40	65 3/8	17 1/2	2 1/2	3 1/8	7 1/2	5 1/2	5/8 x 11 v (UNC)	8 1/16

COVER BOLTS/NUTS	
TYPE	MATERIAL
STANDARD	STEEL/ZINC
S1	304 STN. STEEL
S3	316 STN. STEEL



NO.	PARTS	MATERIAL	ASTM. DESIGNATION	Q' TY
462	Retaining Plug	Brass	B 21	1
351	O-Ring	Rubber (Buna N)	D 2000 BK 707	1
329	Cover O-Ring	Rubber (Buna N)	D 2000 BK 807	1
327	Gasket	Rubber (Buna N)	D 2000 BK 807	2
324	Cover Gasket	Rubber (Buna N)	D 2000 BK 807	1
262	Disc Bolt	Stainless Steel	A 276 Type 304	1
199	Seat Holder Bolt	Stainless Steel	A 276 Type 304	1 set
197	Weight Bolt	Zinc Coated Steel	A 307 Grade B	2
194	Cover Bolt & Nut	SEE COVER BOLT TABLE		1 set
166	Plug $\phi 1/2'$	Stainless Steel	A 276 Type 304	1
161	Key	Stainless Steel	A 276 Type 304	1
159	Hinge Pin	Stainless Steel	A 276 Type 304	1
155	Weight Arm	Ductile Iron	A 536 Gr. 65-45-12	1
088	Seat Nut	Brass	B 21	1
062	Disc Seat Ring	Rubber (Buna N)	D 2000 BK 807	1
061	Body Seat Ring	Bronze	B 62	1
024	Seat Holder	Ductile Iron	A 536 Gr. 65-45-12	1
016	Weight	Cast Iron	A 126 Class B	1
023	Arm	Ductile Iron	A 536 Gr. 65-45-12	1
014	Cover	Cast Iron	A 126 Class B	1
003	Disc	Cast Iron	A 126 Class B	1
001	Body	Cast Iron	A 126 Class B	1

MATERIAL LIST			
HYDRO SHELL		300	PSI.
HYDRO VALVE SEAT		150	PSI.
HYDRO BACK SEAT		—	PSI.
AIR SEAT		—	PSI.
STEAM		—	PSI.

TEST PRESSURE	
WORKING PRESSURE	150 PSI.



SCALE	DR.	DATE	REF. DWG.
N.T.S.	JON COLPAN	10/20/10	USA1326C

TITLE	
SIZE 30" AND 36" SWING CHECK VALVE AWWA C508 BRONZE BODY SEAT RING & BUNA N DISC SEAT RING WITH ONE LEVER AND WEIGHT	

TYPE	DWG NO.	REV.
8001AB1LW	M80013	5

REVISION 1, CHANGED ITEM 166 MTRL. TYPE FROM MALLEABLE IRON A47 TO, UJC, 03/08/11, ECR# 456
 REVISION 3. CHANGED COVER O-RING NUMBER TO 329, DJK, 6/20/18
 REVISION 5. UPDATED NEW LOGOS, TT/JL, 07/19/19

REVISION 2, ADDED COVER O-RING TO MATERIAL TABLE AND REMOVED PAINT NOTE, AA, 11/28/17
 REVISION 4. ADDED COVER BOLT TABLE, TT/JL, 06/06/19