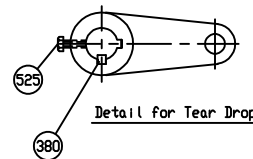
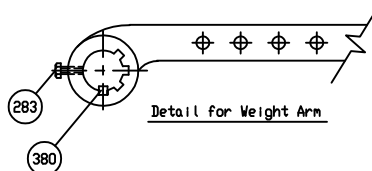
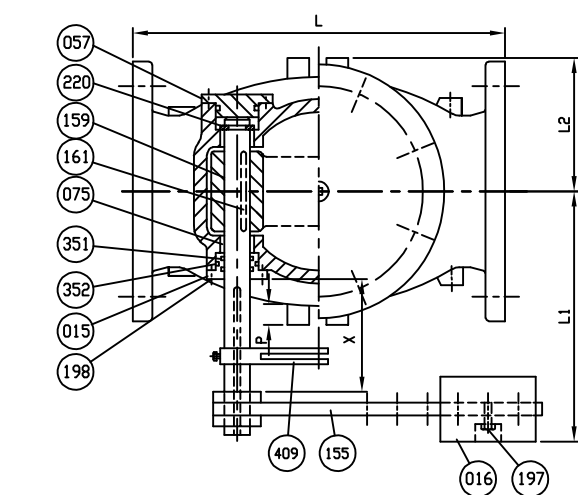


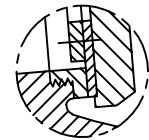
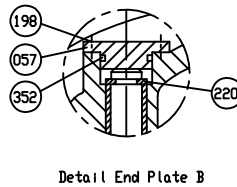
Remark - Part No. (024) Seat Holder

Size 3"-6" ⇒ Cast Iron, A126 Class B

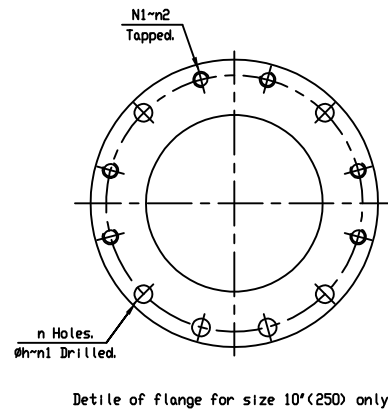
Size 8"-12" ⇒ Ductile Iron, A536 Gr. 65-45-12



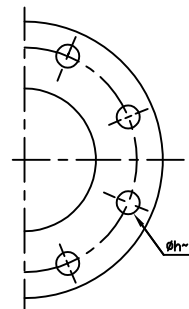
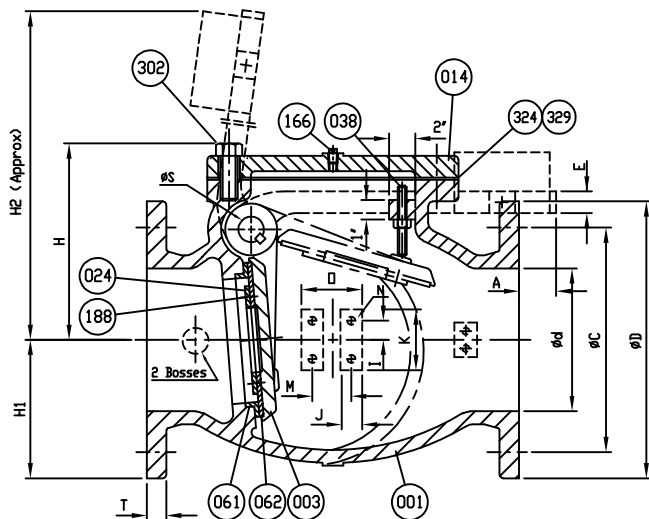
COVER BOLTS		
TYPE	MATERIAL	✓
STANDARD	STEEL/ZINC	
S1	304 STN. STEEL	
S3	316 STN. STEEL	



Body Seat Screwed In



Detail of flange for size 10" (250) only.



Marking

SIZE (INCH)
CCNE
200 CWP
AWWA C508
SERIES 9000



SCI
YEAR
POURING DATE

- Dimensions in inches.

SIZE in. mm.	L	ANSI B16.1 CL. 125					ØS	E	H	H1	H2	I	J	K	M	N	N1	n1	n2	Ø	P	A	X	L1	L2	Plug Size
		ØD	ØC	Øh	n	T																				
3 (80)	11	7 1/2	6	3/4	4	3/4	1	1 13/16	6 3/8	3 3/4	18	3/4	1 1/2	3	2 1/2	1/2x13v(UNC)	—	—	—	4	3/4	5	5.5	10 3/4	4	1/2
4 (100)	13	9	7 1/2	3/4	8	15/16	1 1/8	1 13/16	7 3/8	4 1/2	19 5/8	3/4	1 1/2	3	2 1/2	1/2x13v(UNC)	—	—	—	4	3/4	5	5.75	11 1/2	4 7/16	1/2
6 (150)	16	11	9 1/2	7/8	8	1	1 3/8	1 13/16	9 3/16	5 1/2	22 5/8	3/4	1 1/2	3	2 1/2	1/2x13v(UNC)	—	—	—	4	3/4	5	6	12 7/8	5 3/4	3/4
8 (200)	19 1/2	13 1/2	11 3/4	7/8	8	1 1/8	1 3/4	1 13/16	10 7/8	6 3/4	29 1/8	7/8	1 3/4	3 1/2	3 1/4	5/8x11v(UNC)	—	—	—	5	1 1/4	5.5	7	15 5/8	7 7/8	3/4
10 (250)	22	16	14 1/4	1	12	1 3/16	2 1/8	2 1/2	13 3/16	8	35	7/8	1 3/4	3 1/2	3 1/4	3/8x11v(UNC)	1/8x9v(UNC)	6	6	5	1 1/4	6.08	7.75	17 3/8	9 3/16	1
12 (300)	26	19	17	1	12	1 1/4	2 1/2	2 1/2	15 3/16	9 1/2	40 3/8	7/8	1 3/4	3 1/2	3 1/4	5/8x11v(UNC)	—	—	—	5	1 1/4	5.47	8.75	20 1/8	10 3/4	1

525	Tear Drop Bolt	Zinc Coated Steel	A 307 Grade B	1
409	Tear Drop	Ductile Iron	A 536 Gr. 65-45-12	1
380	Key B	Stainless Steel	A 276 Type 304	2
352	O-Ring C	Rubber (Buna N)	D 2000 BK 707	2
351	O-Ring B	Rubber (Buna N)	D 2000 BK 707	2
329	Cover O-Ring	Rubber (Buna N)	D 2000 BK 807	1
324	Cover Gasket	Rubber (Buna N)	D 2000 BK 807	1
302	Cover Bolt	See Cover Bolt Table		1 set
283	Arm Bolt	Zinc Coated Steel	A 307 Grade B	1
220	Snap Ring	Stainless Steel	A 276 Type 420	1
198	End Plate Bolt	Zinc Coated Steel	A 307 Grade B	2 set
197	Weight Bolt	Zinc Coated Steel	A 307 Grade B	1
188	Disc Seat Bolt	Stainless Steel	A 276 Type 304	1 set
166	Plug	Stainless Steel	A 276 Type 304	1
161	Key A	Stainless Steel	A 276 Type 304	1
159	Hinge Pin	Stainless Steel	A 276 Type 304	1
155	Weight Arm	Ductile Iron	A 536 Gr. 65-45-12	1
075	Bushing	Bronze	B 62	2
062	Disc Seat Ring	Rubber (Buna N)	D 2000 BK 807	1
061	Body Seat Ring	Bronze	B 62	1
057	End Plate B	Ductile Iron	A 536 Gr. 65-45-12	1
038	Stopper	Stainless Steel	A 276 Type 304	1
024	Seat Holder	See Remark		1
016	Weight	Cast Iron	A 126 Class B	1
015	End Plate A	Bronze	B 62	1
014	Cover	Cast Iron	A 126 Class B	1
003	Disc	Ductile Iron	A 536 Gr. 65-45-12	1
001	Body	Cast Iron	A 126 Class B	1
IND.	PARTS	MATERIAL	ASTM DESIGNATION	QTY

MATERIAL LIST

HYDRD SHELL	400	PSI.
HYDRD VALVE SEAT	200	PSI.
HYDRD BACK SEAT	—	PSI.
AIR SEAT	—	PSI.
STEAM	—	PSI.

TEST PRESSURE

WORKING PRESSURE	200	PSI.
------------------	-----	------

MUELLER

SCALE	DR. JON COLPAN	DATE 10/19/10	REV. DWG.
N.T.S.	CHK.	APP.	E.G.N. USA1349D

TITLE
SIZE 3" TO 12" SWING CHECK VALVE AWWA C508
BRONZE BODY SEAT RING & BUNA N DISC SEAT RING
WITH ONE LEVER AND WEIGHT

TYPE:	9001AB1LW	DWG NO.	M90001	REV.	5
-------	-----------	---------	--------	------	---