

ECHOLOGICS[®]

a **MUELLER** brand

**WHAT PEACE
OF MIND
LOOKS LIKE**

**ECHOSHORE[®]-TX:
PIPELINE
MONITORING
FOR CRITICAL
TRANSMISSION
MAINS**



DETECT



MONITOR



CONTROL



REPAIR

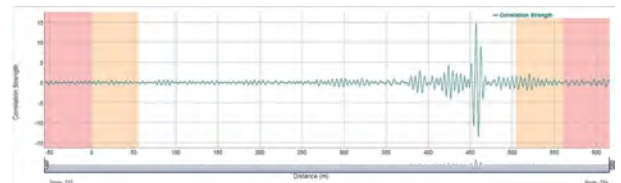
MUELLER

ECHOLOGICS®

a **MUELLER** brand



The **Operator Screen** provides an easy-to-read interface. Once activated, the EchoShore®-TX nodes collect data, and at assigned times, the information is uploaded to a secure server where advanced algorithms interpret the data and generate reports.



Leak Identification and Alerting shown. The monitoring platform is fully compatible with common pipe materials, cost-effective to deploy on a range of pipe diameters.

PROVEN TECHNOLOGY PLATFORM

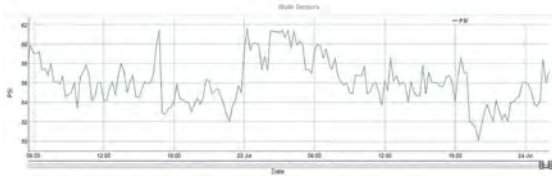
Broken water mains cause flooding and property damage, cost money, disrupt lives, and negatively affect reputation. Until now, monitoring solutions for water mains have usually been an expensive and complicated venture.

Our user-friendly interface enables Utilities to remotely check system status as well as investigate and verify potential infrastructure problems and pipeline leaks at any time.

DATA AT YOUR FINGERTIPS

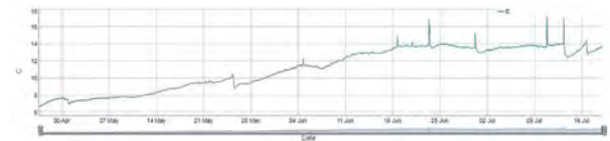
The EchoShore®-TX platform is quickly and easily installed and delivers daily status reports on your water transmission main. When the system detects a leak or anomaly, you get an email right away. Utility staff and field crews can respond rapidly to any pipeline problem before a potential failure could, giving you, your managers, and your staff peace of mind.

REDUCE OPERATING RISKS IN TRANSMISSION MAINS WITH OUR ADVANCED MONITORING PLATFORM.



Non-invasive installation at existing fittings.

The EchoShore®-TX system is deployed without any disruption to your water operation.



Temperature changes are one of many aspects that can be tracked. The EchoShore®-TX technology can also monitor static pressure, chlorine levels, and other operator requirements.

REDUCE COSTS

By avoiding pipe ruptures, damage and service outage, you save money exponentially. You no longer have to replace a main just “to be sure.” EchoShore®-TX monitoring allows you to safely extend the life of your assets at a fraction of the cost.

The EchoShore®-TX technology is an advanced platform designed to monitor critical, and high-risk water transmission mains.

FEATURES

- Daily correlation of entire pipeline to detect emerging leaks and monitor their progress over time
- Quick and simple installation
- Ability to monitor the pipe for any period of time, short or long – from just a few months to years
- Compatible with pipe diameters DN400 and larger

ECHOLOGICS®

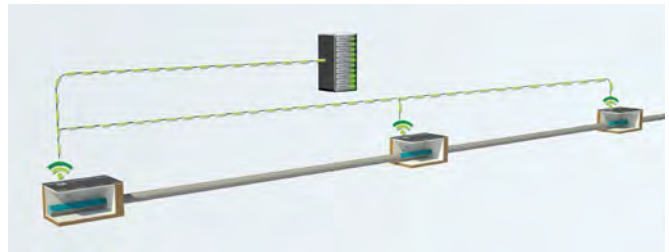
a MUELLER brand

HOW IT WORKS

The transmission main monitoring platform is quickly and easily installed and there is no disruption of water supply.

At the heart of the platform are the nodes, which consist of a data processor, communication hardware, and a battery power source. The nodes are installed in a chamber along the length of the transmission main providing monitoring from hundreds of metres to several kilometres.

Once activated, the acoustic sensors collect data about the pipeline section and then upload to a server to be processed and interpreted. The system then generates and displays reports for your review. In the event of a leak or other anomaly, alerts can be sent to devices, such as personal computers and smartphones.



USES

Typical application sites:

- Bridges and river crossings
- Major roadways and transport links
- Mains without redundancy
- Primary feeder mains
- Mains with a history of rupture or leakage
- Industrial supply lines
- Construction zone monitoring

For more information about us, or to view our full line of products, please visit www.echologics.com or call International Customer Service at:

UK: +44.1438.487410 Dubai: +971.4.214.6640 Singapore: +65.6816.3088 USA: +1.800.423.1323 | International@muellerwp.com

Mueller refers to one or more of Mueller Water Products, Inc. (MWP), a Delaware corporation, and its subsidiaries. MWP and each of its subsidiaries are legally separate and independent entities when providing products and services. MWP does not provide products or services to third parties. MWP and each of its subsidiaries are liable only for their own acts and omissions and not those of each other. Mueller brands include Mueller®, Echologics®, Hydro Gate®, Hydro-Guard®, HYMAX®, i2O®, Jones®, Krausz®, Mi.Net®, Milliken®, Pratt®, Pratt Industrial®, Singer®, and U.S. Pipe Valve & Hydrant. Please see muellerwp.com/brands to learn more.

© 2022 Mueller. All Rights Reserved. The trademarks, logos and service marks displayed in this document are the property of Mueller, or other third parties. Products marked with a section symbol (§) are subject to patents or patent applications. For details, visit www.mwppat.com. These products are intended for use in potable water applications. Please contact your Mueller Sales or Customer Service Representative concerning any other application(s).

