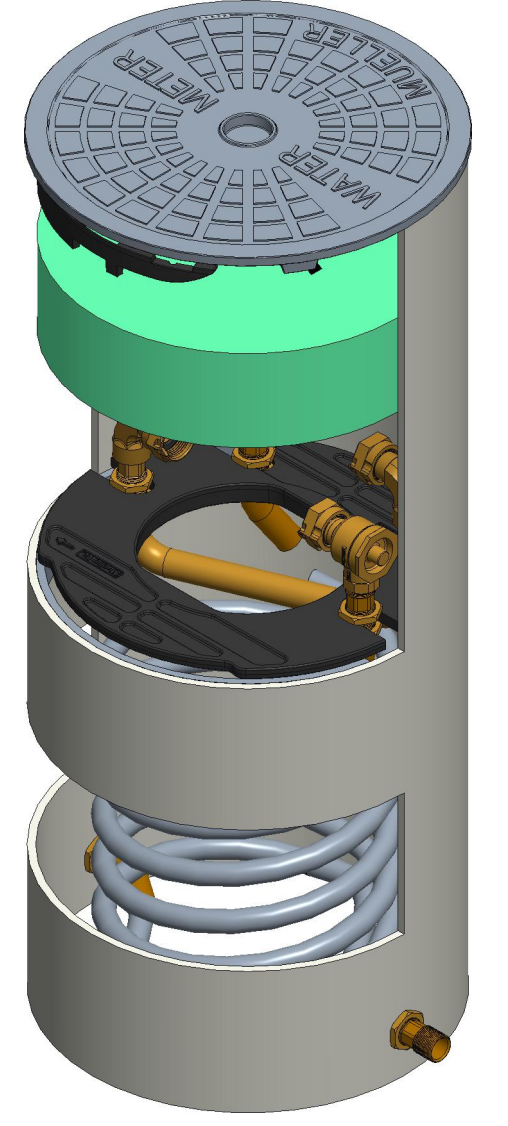
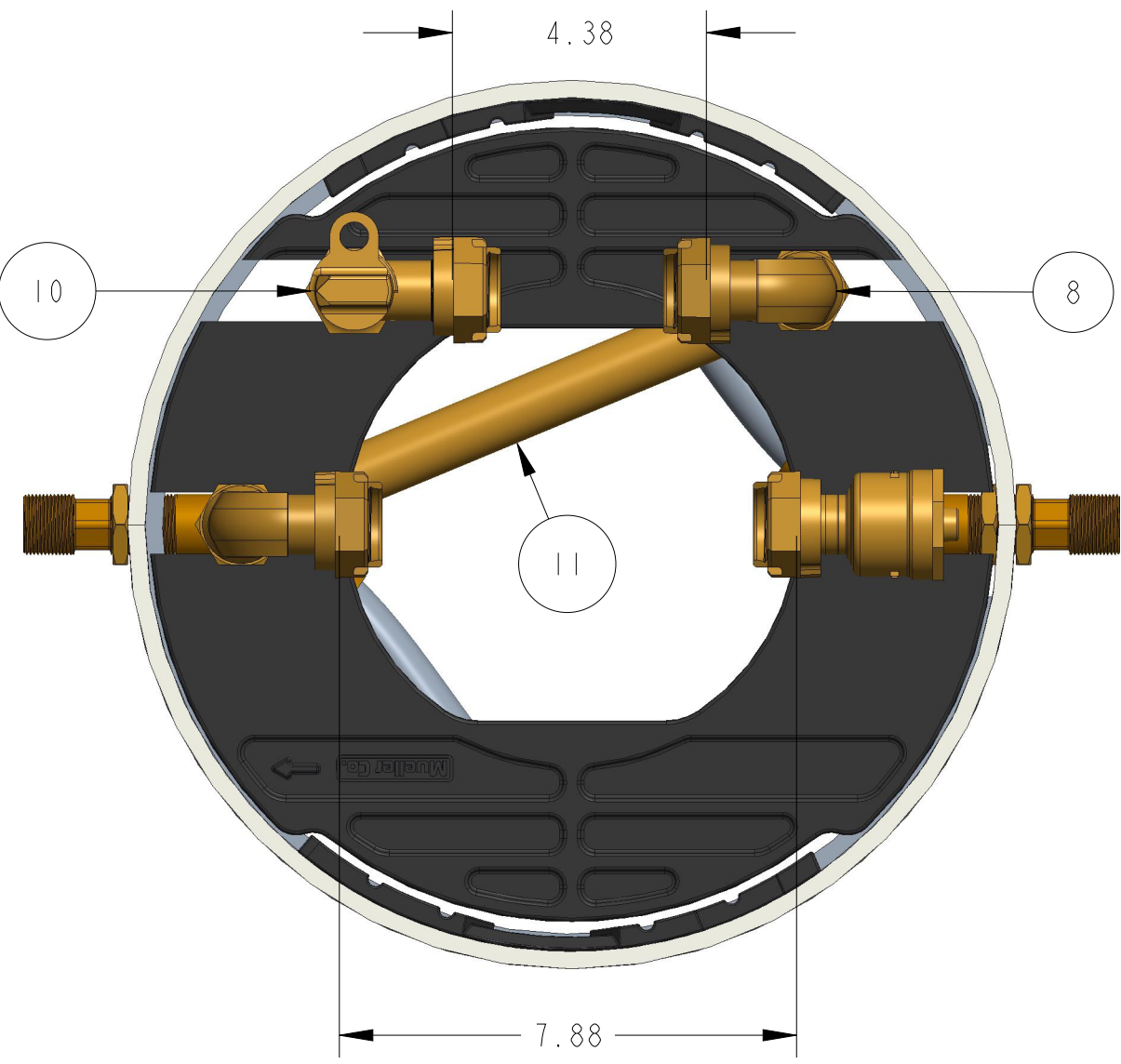
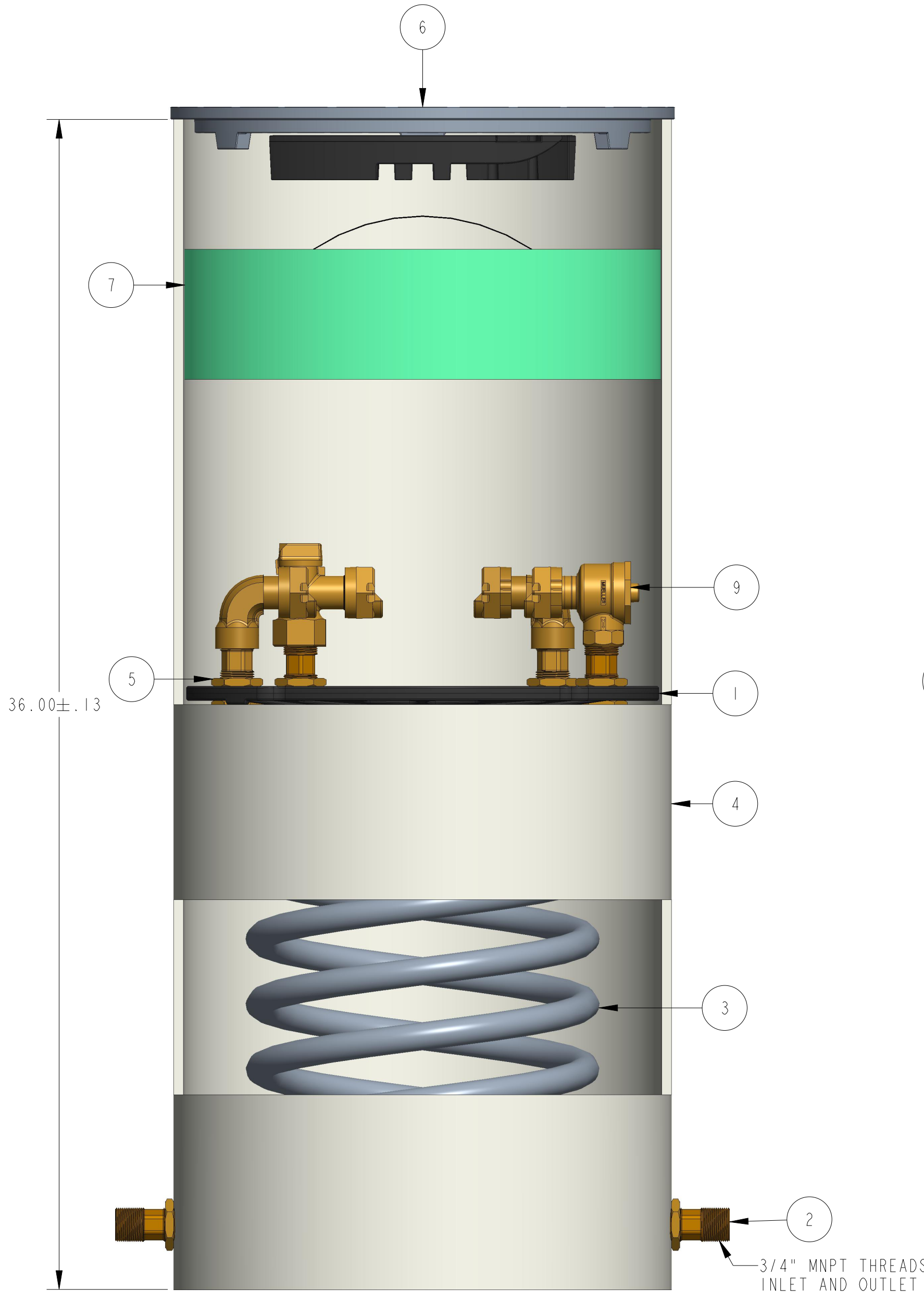


ITEM NO	PART NUMBER	QTY	DESCRIPTION	MATERIAL
1	311966	1	15-20 ABS PLATFORM	PLASTIC VIRGIN POLYLAC, PA747 ABS BLACK RESIN OR PROOFED EQUIVALENT RESIN
2	700013	4	3/4" HOSE CONNECTOR	RED BRASS ASTM B43 ALLOY C23000 061 TEMPER ANNEALED
3	700035-1536	2	3/4" COIL PART	PB 2110 CL 250 SDR-9 ASTM D2666
4	780000-1536	1	SHELL SUB ASSEMBLY	SDR-51 PVC PIPE ASTM D2241 GRADE 1120
5	790006	12	3/4" HEX NUT	ASTM B16 ALLOY C36000
6	790007	1	15" CAST IRON FLAT LID	CAST IRON ASTM A126 CLASS B
7	790022	1	15" INSULATION PAD (SOLD SEPARATELY)	ETHAFOAM 220 WHITE OR POLYLAM 1.7 DENSITY WHITE
8	215H14210	2	5/8" X 3/4" METER COUPLING (SWIVEL NUT)	LEAD FREE BRASS ALLOY ASTM B584 C89833/C87850
9	215H14244	1	5/8" X3/4" DUAL CHECK VALVE	LEAD FREE BRASS ALLOY ASTM B584 C89833/C87850
10	215H14265	1	3/4" ANGLE LOCK WING METER STOP VALVE	LEAD FREE BRASS ALLOY ASTM B584 C89833/C87850
11	250UB1050CL050	1	3/4" U-BAR	ASTM B43 SEAMLESS RED BRASS C23000 061 TEMPER



OPTION CODE 546:
*WILKINS MODEL 70XL-DM

REVISIONS					
REV	ECR	DESCRIPTION	DRAWN BY	DATE	APPROVED
A		RELEASED	AOS	4/13/22	
B		UPDATED PRV LAY LENGTH	JBK	1/29/24	
C		UPDATED U-BAR PART NUMBER, UPDATED FORMAT AND ADDED MATERIAL INFORMATION	AOS	9/6/24	

INTERPRET THIS DRAWING IN ACCORDANCE WITH ASME Y14.5 2018 UNLESS OTHERWISE SPECIFIED DIMENSIONS ARE IN INCHES. MACHINING TOLERANCES: X .XX ±.1 .XXX ±.015 .000 ±.005 ANGULAR CORNER BREAK FINISH ±1° .015/.025 125 μin. RA		NAME: AOS DATE: Sep-06-24 D.E. APPR. M.E. APPR. Q.A. APPR. DO NOT SCALE DRAWING CRITICAL REFERENCE	THIRD ANGLE PROJECTION 	
TITLE: 5/8" X 3/4" COIL TANDEM METER PIT 15" DIA X 36" DEPTH LEAD FREE BRASS				
MATERIAL:	SIZE: C	DWG. NUMBER: 203CT1536LBBN000546N	REV: C	
STK NUMBER:	REF. NO.	SCALE: 0.020	WT: SHEET 1 OF 1	

TITLE TO AND OWNERSHIP OF THIS ENGINEERING DATA REMAINS IN Mueller Co. ASSENT ON THE PART OF THE RECIPIENT TO THESE CONDITIONS IS PRESUMED.