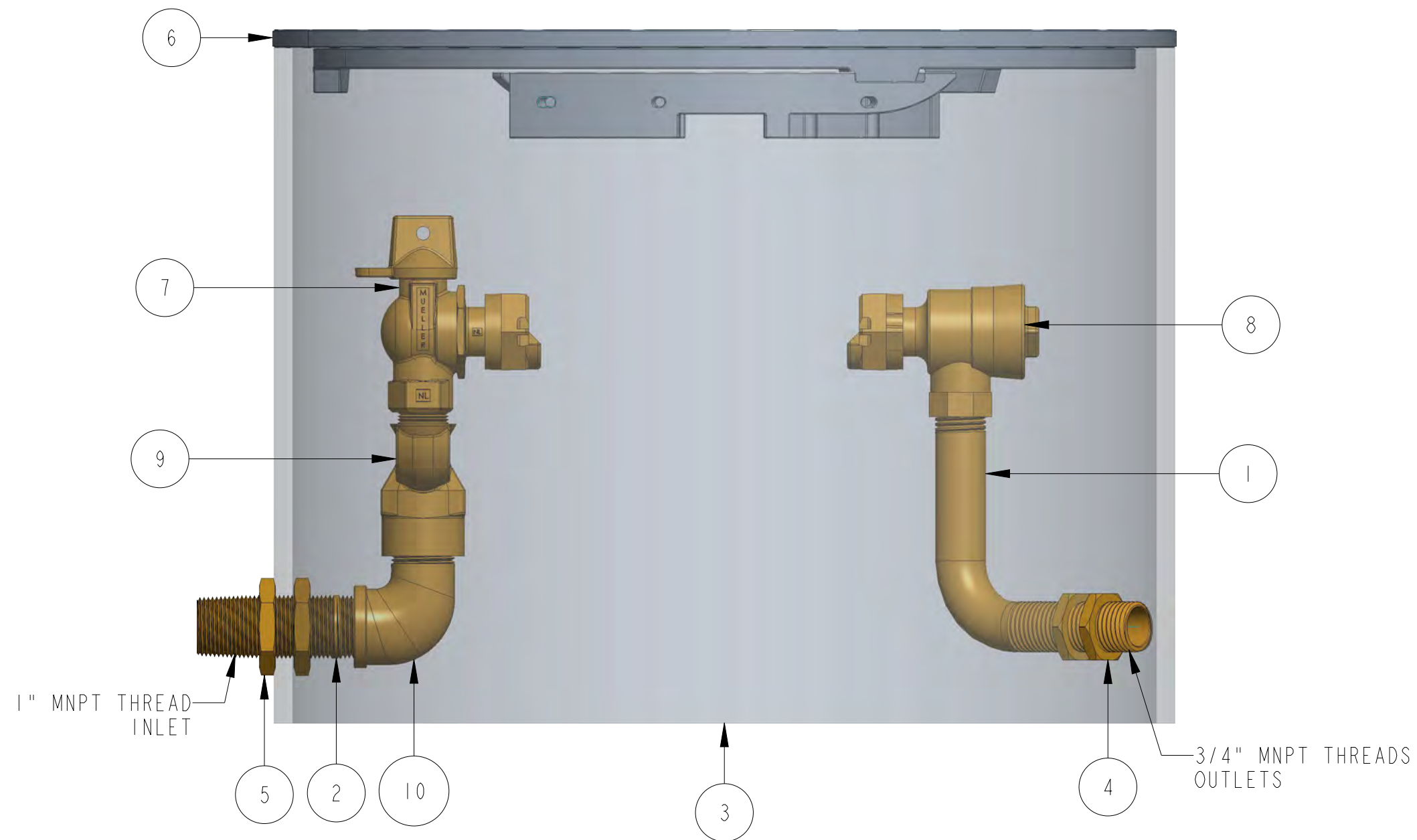
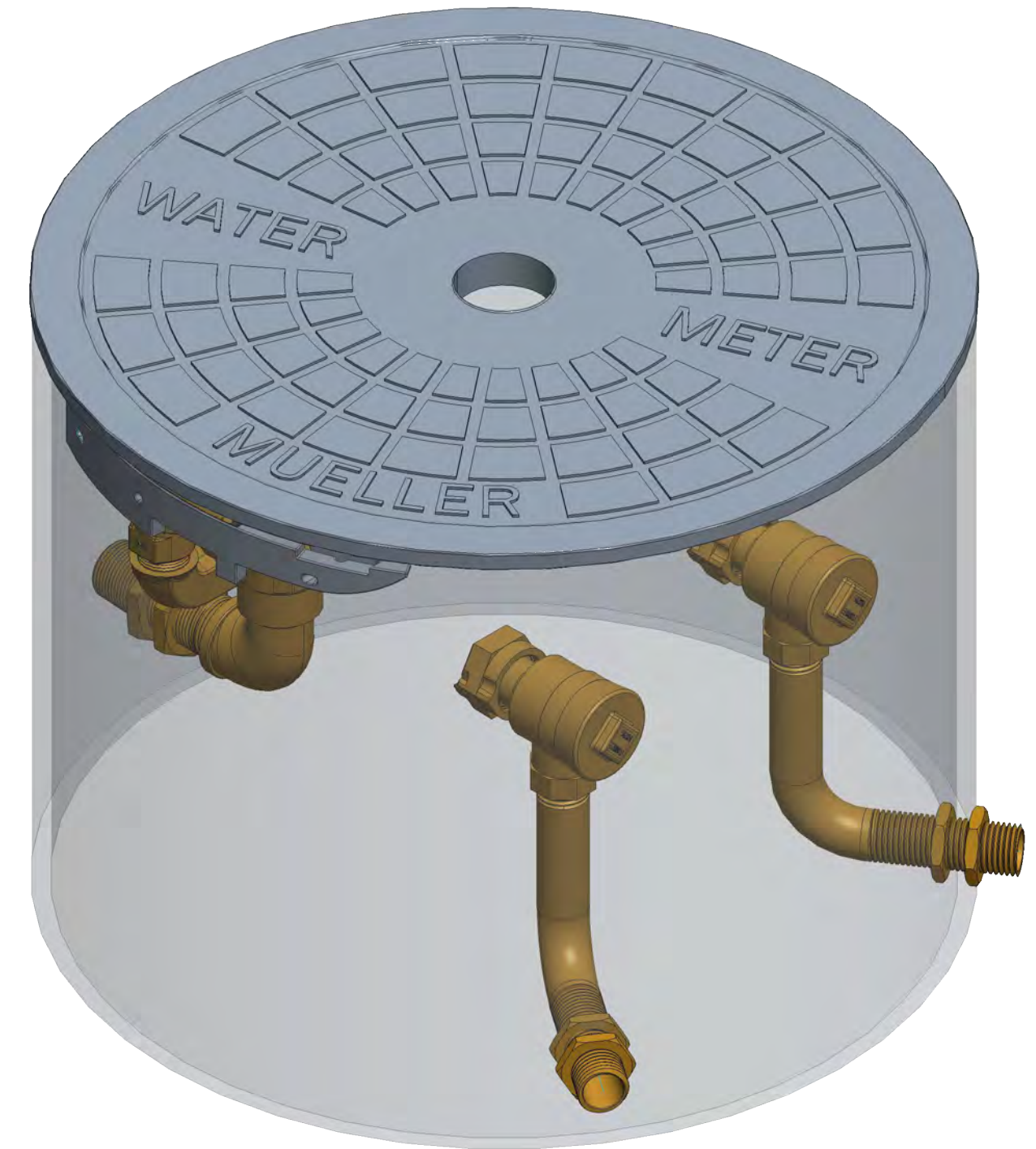
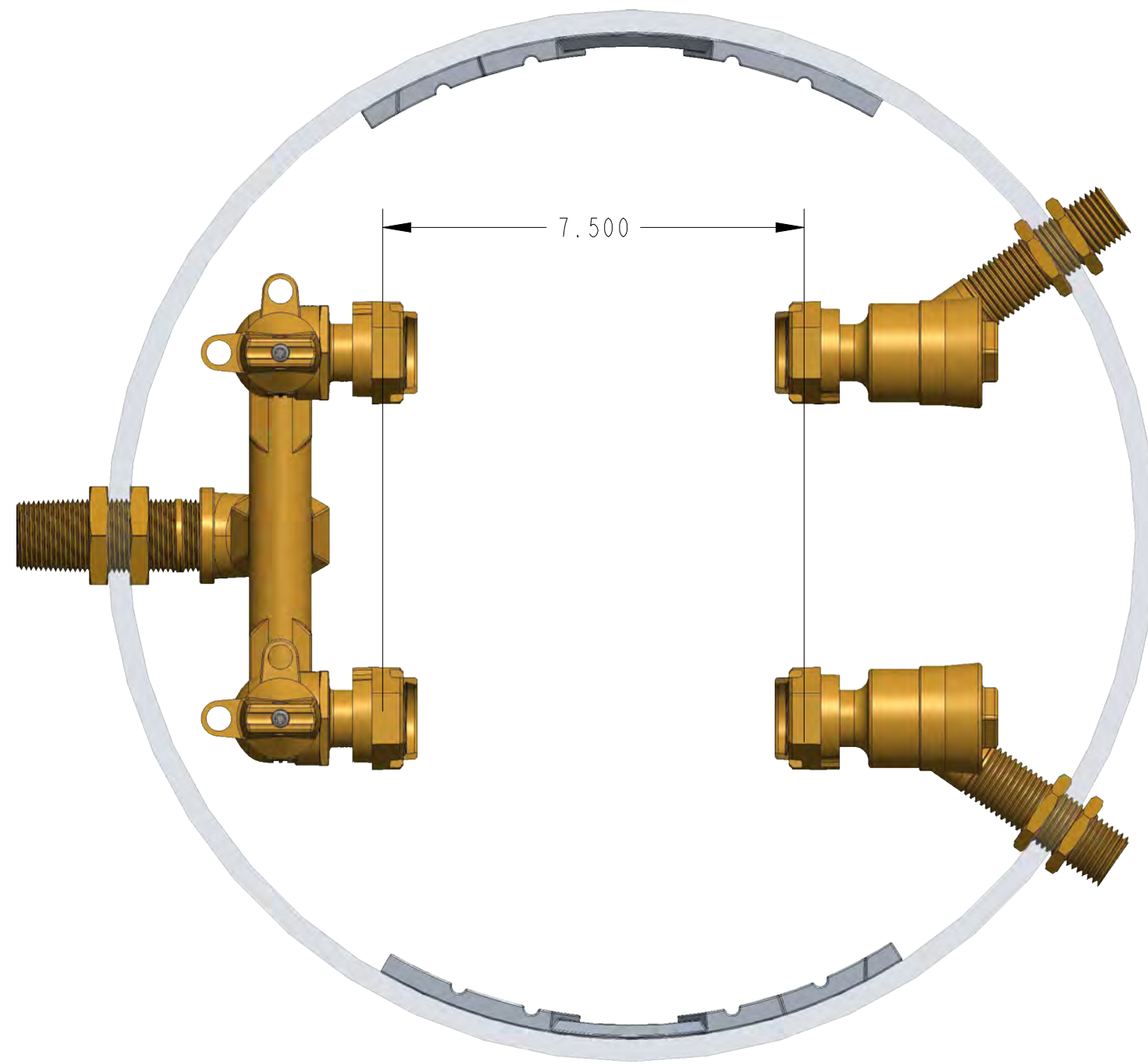


ITEM NO	PART NUMBER	QTY	DESCRIPTION
1	548392	2	3/4" BRASS PIPE RISER
2	700172	1	1" NIPPLE
3	780084-1814	1	SHELL SUB ASSEMBLY
4	790006	4	3/4" HEX NUT
5	790010	2	1" HEX NUT
6	790018-TR2	1	18" DIA FLAT NON LOCKING LID W/ 2" TR HOLE (SOLD SEPARATELY)
7	215B24265N	2	5/8" X 3/4" FULL PORT BALL VALVE
8	215HI4244AN	2	5/8" X 3/4" ASSE DUAL CHECK VALVE
9	400HI5365N	1	1" INLET X 3/4" OUTLET U-BRANCH
10	790052E	1	1" STREET ELBOW



DR. BY	AOD	6/30/22	UNLESS OTHERWISE NOTED	THIRD ANGLE PROJECTION	C.B. NO.	
CHKR			BREAK CAST CORNER(S)---			
ENGR			BREAK MACH CORNER(S)---	PURCH.	FINISH	
MGR			TOLERANCES	REF. NO.	SCALE	
MFG			UNLESS OTHERWISE NOTED	STR. NO.	PATT. NO.	
TOOL			LINEAR	±	ANGULAR	±
FDRY						
MAT'L:						
<b>MUELLER</b>			DESCR: 5/8" X 3/4" RIGID DOUBLE METER PIT 18" DIA X 14" DEPTH LOW LEAD BRASS		NUMBER 203RD1814FSBNN	