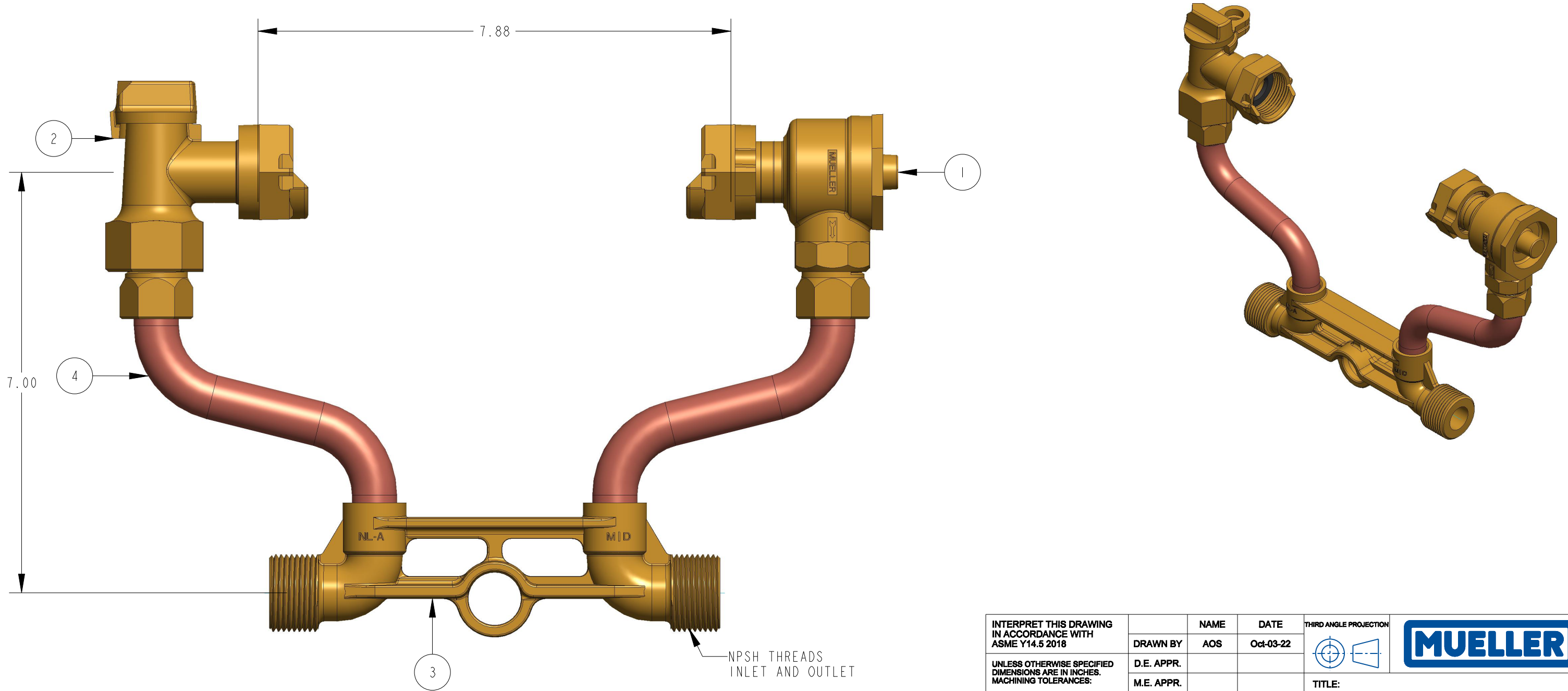


ITEM NO	PART NUMBER	QTY	DESCRIPTION	MATERIAL
1	215H14244	1	5/8" X3/4" DUAL CHECK VALVE	LEAD FREE BRASS ALLOY ASTM B584 C89833/C87850
2	215H14265	1	3/4" ANGLE LOCK WING METER STOP VALVE	LEAD FREE BRASS ALLOY ASTM B584 C89833/C87850
3	532086E	1	METER BAR 1" METER THREAD LLB	LEAD FREE BRASS ALLOY ASTM B584 C89833/C87850
4	680001E	2	RISER SUB ASSEMBLY	COPPER ALLOY C12200



INTERPRET THIS DRAWING IN ACCORDANCE WITH ASME Y14.5 2018 UNLESS OTHERWISE SPECIFIED DIMENSIONS ARE IN INCHES. MACHINING TOLERANCES: .X ±.1 .XX ±.015 .XXX ±.005 ANGULAR CORNER BREAK FINISH ±1° .015/.025 125 µin. RA	NAME AOS	DATE Oct-03-22	THIRD ANGLE PROJECTION 		
	DRAWN BY AOS				TITLE: 5/8"X3/4" COPPER METER SETTER 7" RISER HEIGHT LEAD FREE BRASS
	D.E. APPR. 				SIZE B
	M.E. APPR. 				DWG. NUMBER 234H14118-2--N
	Q.A. APPR. 		DO NOT SCALE DRAWING = CRITICAL () = REFERENCE	REV A	
MATERIAL: 	REF.NO. 	SCALE: 0.250	WT:	SHEET 1 OF 1	

REVISIONS					
REV	ECR	DESCRIPTION	DRAWN BY	DATE	APPROVED
B		REVISED DRAWING FORMAT	AOS	5/31/24	

TITLE TO AND OWNERSHIP OF THIS ENGINEERING DATA REMAINS IN Mueller Co. ASSENT ON THE PART OF THE RECIPIENT TO THESE CONDITIONS IS PRESUMED.