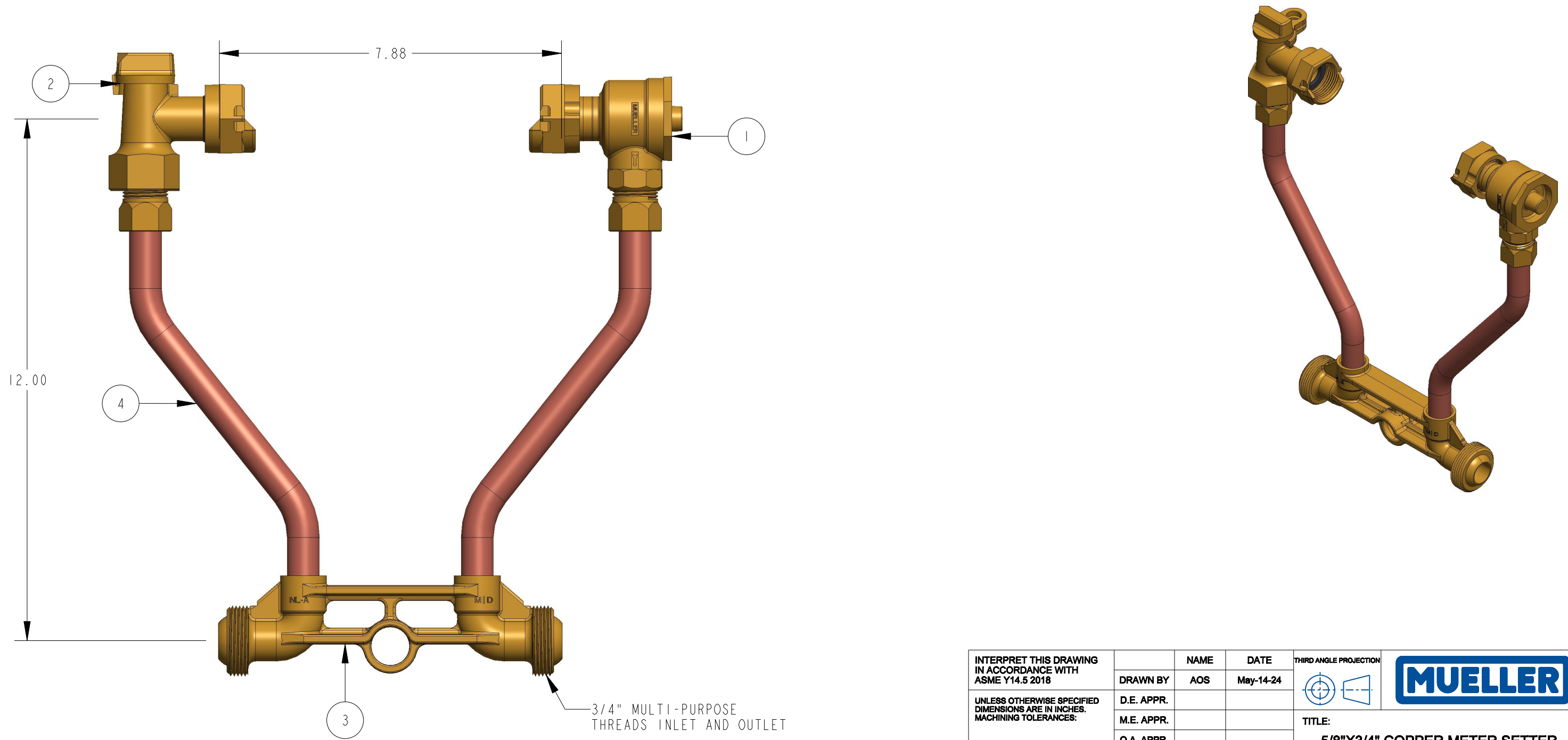



| ITEM NO | PART NUMBER | QTY | DESCRIPTION                           | MATERIAL                                      |
|---------|-------------|-----|---------------------------------------|---|
| 1       | 215HI4244   | 1   | 5/8" X3/4" DUAL CHECK VALVE           | LEAD FREE BRASS ALLOY ASTM B584 C89833/C87850 |
| 2       | 215HI4265   | 1   | 3/4" ANGLE LOCK WING METER STOP VALVE | LEAD FREE BRASS ALLOY ASTM B584 C89833/C87850 |
| 3       | 532076E     | 1   | METER BAR 3/4" MULTI-PURPOSE LLB      | LEAD FREE BRASS ALLOY ASTM B584 C89833/C87850 |
| 4       | 680005E     | 2   | RISER SUB ASSEMBLY                    | COPPER TUBING ASTM B75 UNS C12200 050 TEMPER  |



|  |            |              |  |           |
|--|------------|--------------|--|-----------|
| INTERPRET THIS DRAWING IN ACCORDANCE WITH ASME Y14.5 2018<br><br>UNLESS OTHERWISE SPECIFIED DIMENSIONS ARE IN INCHES. MACHINING TOLERANCES:<br><br>X ±.1<br>.XX ±.015<br>.XXX ±.005<br><br>ANGULAR CORNER BREAK FINISH ±1°<br>.015/.025<br>125 µin. RA | NAME       | DATE         | THIRD ANGLE PROJECTION<br><br><b>MUELLER</b><br><br>TITLE:<br><b>5/8"X3/4" COPPER METER SETTER<br/>         12" RISER HEIGHT<br/>         LEAD FREE BRASS</b> |           |
|  | DRAWN BY   | AOS          |  | May-14-24 |
|  | D.E. APPR. |              |  |           |
|  | M.E. APPR. |              |  |           |
|  | Q.A. APPR. |              |  |           |
| DO NOT SCALE DRAWING   |            |              |  |           |
| MATERIAL:  |            | SIZE         | DWG. NUMBER  |           |
| STK NUMBER:  |            | B            | 238H1404-2--N  |           |
| REF.NO.  |            | SCALE: 0.167 | WT:  |           |
|  |            | SHEET        | 1 OF 1   |           |

| REVISIONS |     |                 |          |         |          |
|-----------|-----|-----------------|----------|---------|----------|
| REV       | ECR | DESCRIPTION     | DRAWN BY | DATE    | APPROVED |
| A         |     | DRAWING CREATED | AOS      | 5/14/24 |          |

TITLE TO AND OWNERSHIP OF THIS ENGINEERING DATA REMAINS IN Mueller Co. ASSENT ON THE PART OF THE RECIPIENT TO THESE CONDITIONS IS PRESUMED.