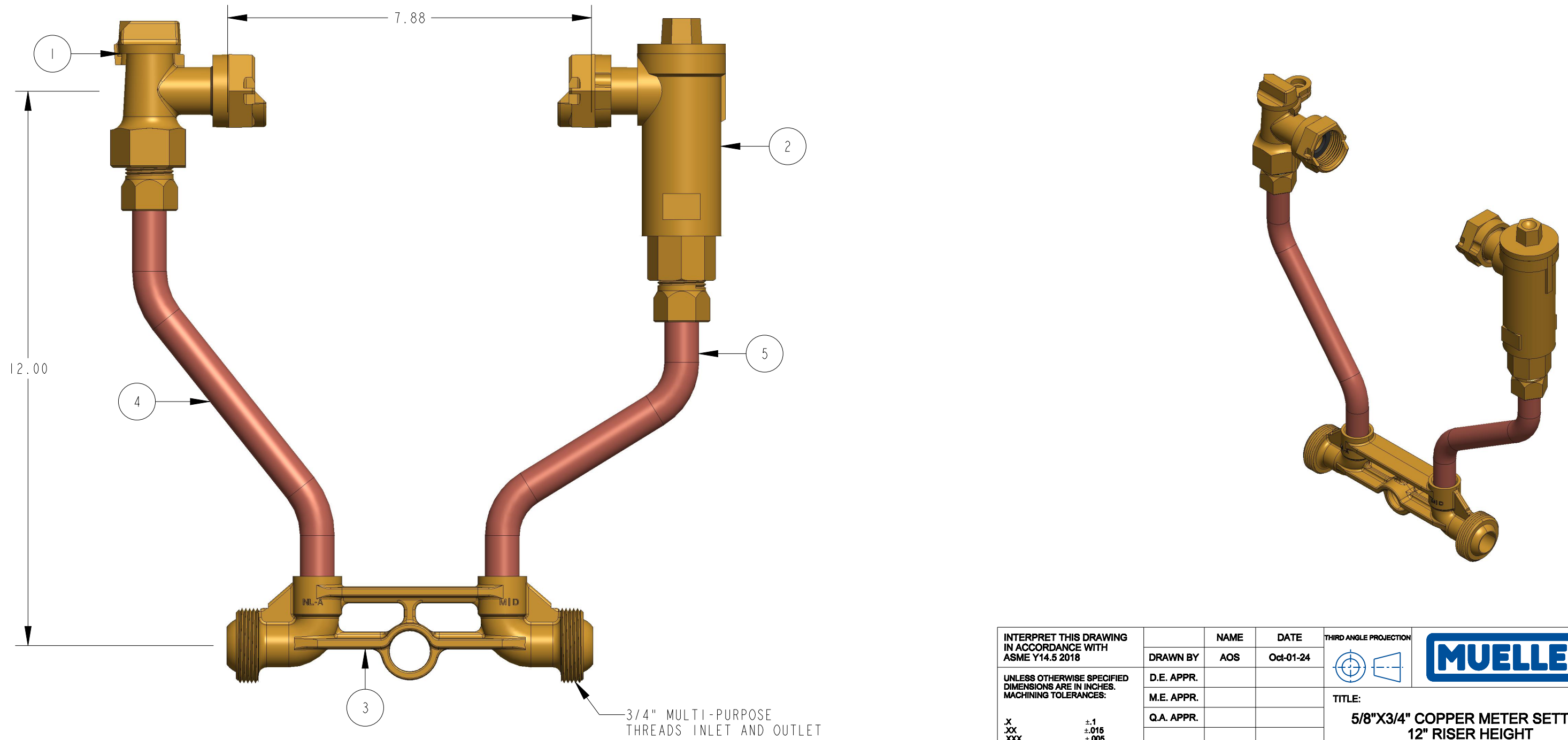



ITEM NO	PART NUMBER	QTY	DESCRIPTION	MATERIAL
1	215HI4265	1	3/4" ANGLE LOCK WING METER STOP VALVE	LEAD FREE BRASS ALLOY ASTM B584 C89833/C87850
2	215HI4460AN	1	5/8" X 3/4" VERTICAL ASSE APPROVED CHECK VALVE	LEAD FREE BRASS ALLOY ASTM B584 C89833/C87850
3	532076E	1	METER BAR 3/4" MULTI-PURPOSE LLB	LEAD FREE BRASS ALLOY ASTM B584 C89833/C87850
4	680005E	1	RISER SUB ASSEMBLY	COPPER TUBING ASTM B75 UNS C12200 050 TEMPER
5	682095E	1	RISER SUB ASSEMBLY	COPPER TUBING ASTM B75 UNS C12200 050 TEMPER



INTERPRET THIS DRAWING IN ACCORDANCE WITH ASME Y14.5 2018 UNLESS OTHERWISE SPECIFIED DIMENSIONS ARE IN INCHES. MACHINING TOLERANCES: X ±.1 .XX ±.015 .XXX ±.005 ANGULAR CORNER BREAK FINISH ±1" .015/.025 125 µin. RA	NAME	DATE	THIRD ANGLE PROJECTION  MUELLER TITLE: 5/8"X3/4" COPPER METER SETTER 12" RISER HEIGHT LEAD FREE BRASS	
	DRAWN BY	AOS		Oct-01-24
	D.E. APPR.			
	M.E. APPR.			
	Q.A. APPR.			
DO NOT SCALE DRAWING				
MATERIAL:		SIZE	DWG. NUMBER	
STK NUMBER:		B	238H1404-6A-N	
REF.NO.		SCALE: 0.167	WT:	
		SHEET	1 OF 1	

REVISIONS					
REV	ECR	DESCRIPTION	DRAWN BY	DATE	APPROVED
A		DRAWING CREATED	AOS	10/01/24	

TITLE TO AND OWNERSHIP OF THIS ENGINEERING DATA REMAINS IN Mueller Co. ASSENT ON THE PART OF THE RECIPIENT TO THESE CONDITIONS IS PRESUMED.