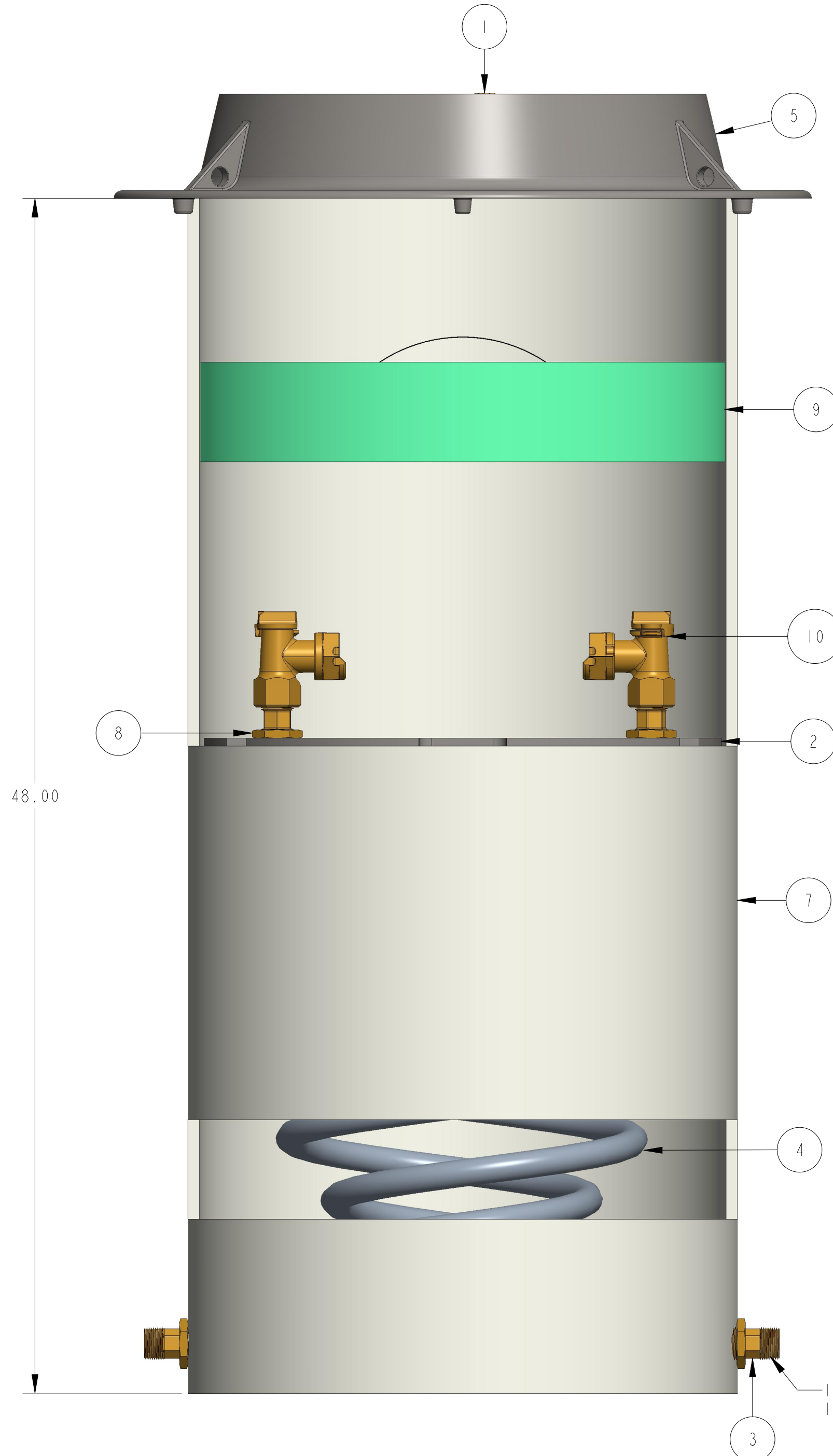
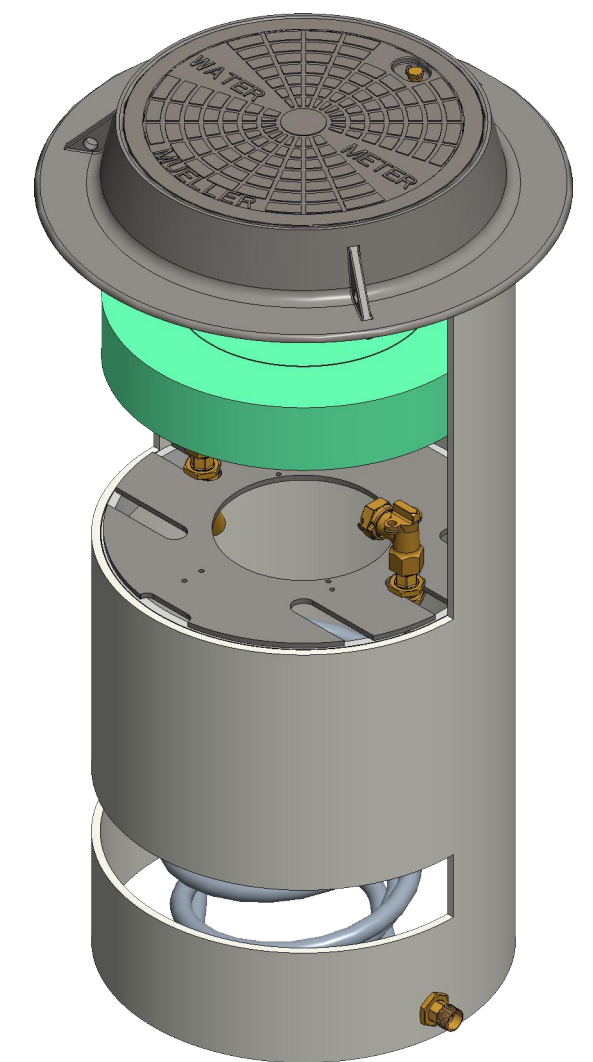
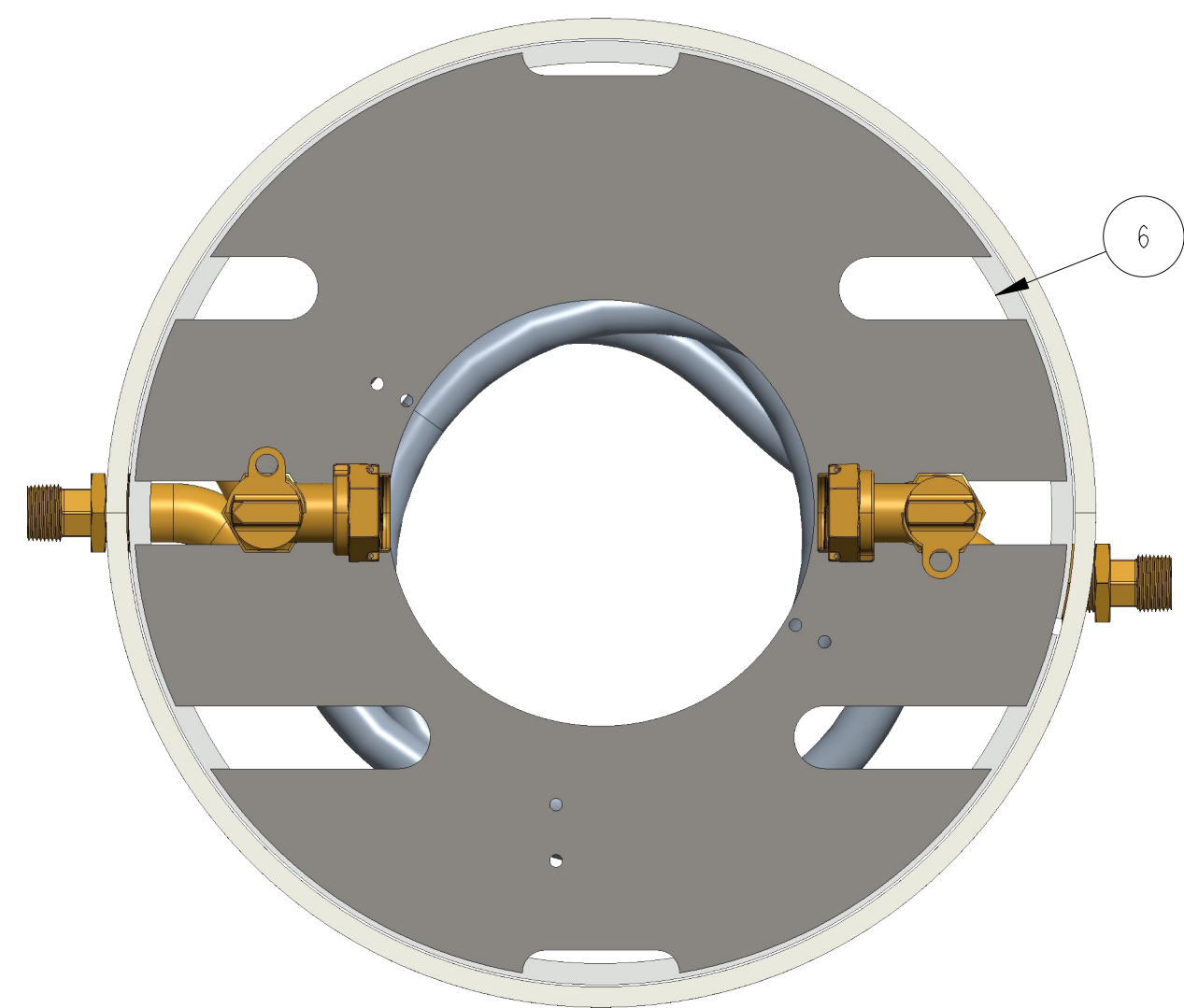


330CS2148LLBSN



ITEM NO	PART NUMBER	QTY	DESCRIPTION	MATERIAL
1	282925	1	18" DIA CAST IRON SIDE LOCKING LID (SOLD SEPARATELY)	CAST IRON ASTM A126 CLASS B
2	546129	1	STEEL PLATFORM	RILSAN COATED A36 CARBON STEEL SHEET
3	700014	4	1" HOSE CONNECTOR	RED BRASS ASTM B43 ALLOY C23000 O61 TEMPER ANNEALED
4	700046-1848	2	1" COIL PART	POLYBUTYLENE RESIN BASELL AKOALIT PB4267 OR 4237 GREY
5	700098-1	1	CAST IRON FRAME (PURCHASED SEPARATELY)	CAST IRON ASTM A48 CLASS 25A
6	700261	1	REINFORCING RING	SDR-51 PVC PIPE ASTM D2241 GRADE 1120
7	780058-2148	1	SHELL SUB ASSEMBLY	SDR-51 PVC PIPE ASTM D2241 GRADE 1120
8	790010	8	1" HEX NUT	ASTM B16 ALLOY C36000
9	790322	1	21" X 4" EZ INSULATING PAD (ORDER SEPARATELY)	ETHAFOAM 220 WHITE OR POLYLAM 1.7 DENSITY WHITE
10	330H14265	2	1" ANGLE METER STOP VALVE	LEAD FREE BRASS ALLOY ASTM B584 C89833/C87850



1" MNPT THREADS INLET AND OUTLET

DR. BY	AOD	3/31/22	UNLESS OTHERWISE NOTED	THIRD ANGLE PROJECTION	C.B. NO.
CHKR			BREAK CAST CORNER(S)---		
ENGR			BREAK MACH CORNER(S)---	PURCH.	FINISH
MGR			TOLERANCES	REF. NO.	SCALE
MFG			UNLESS OTHERWISE NOTED	STR. NO.	PATT. NO.
TOOL			LINEAR		
FDRY			±		
MAT'L:					
<b>MUELLER</b>		DESCR.	1" COIL SINGLE METER PIT 21" DIA X 48" DEPTH LEAD FREE BRASS		NUMBER 330CS2148LLBSN