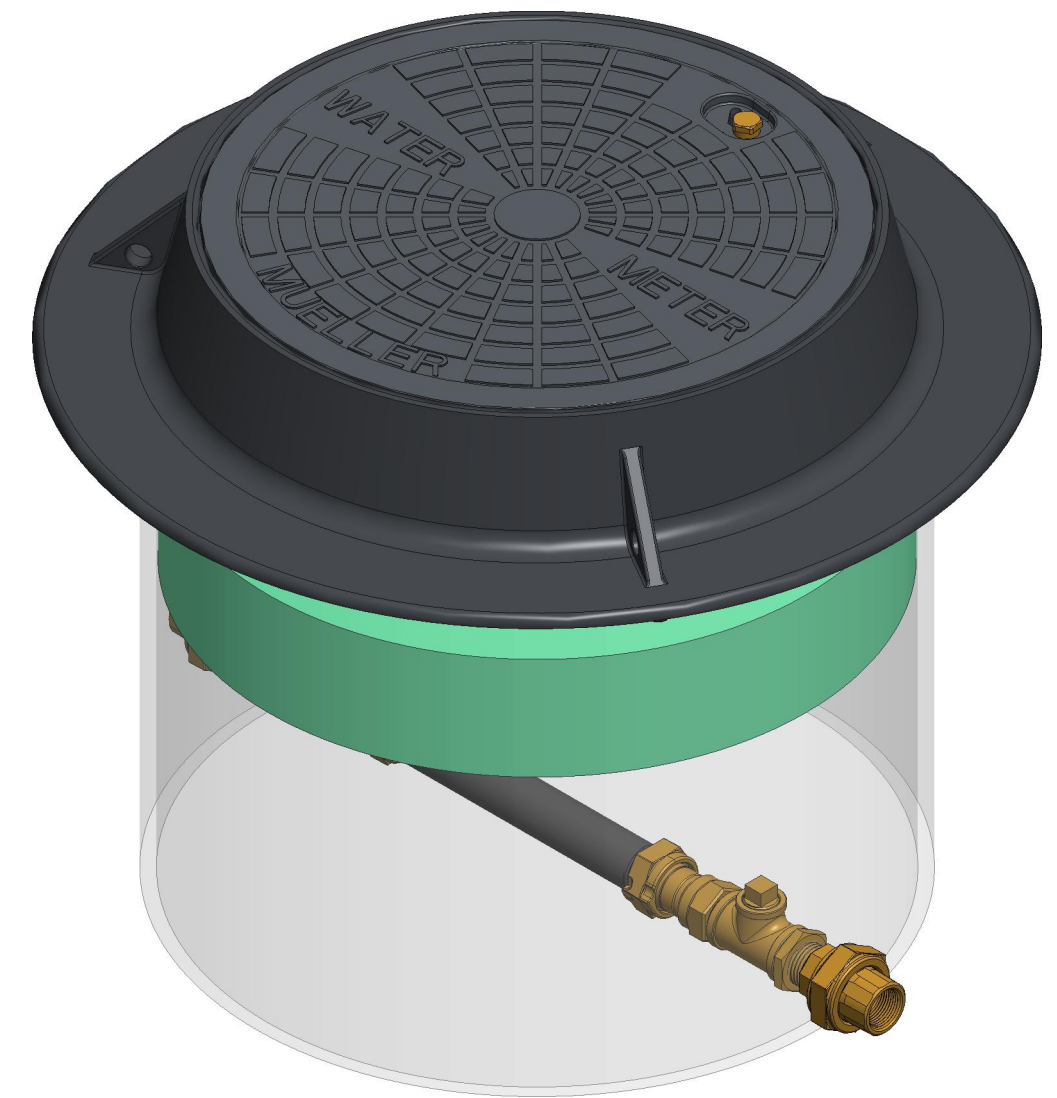
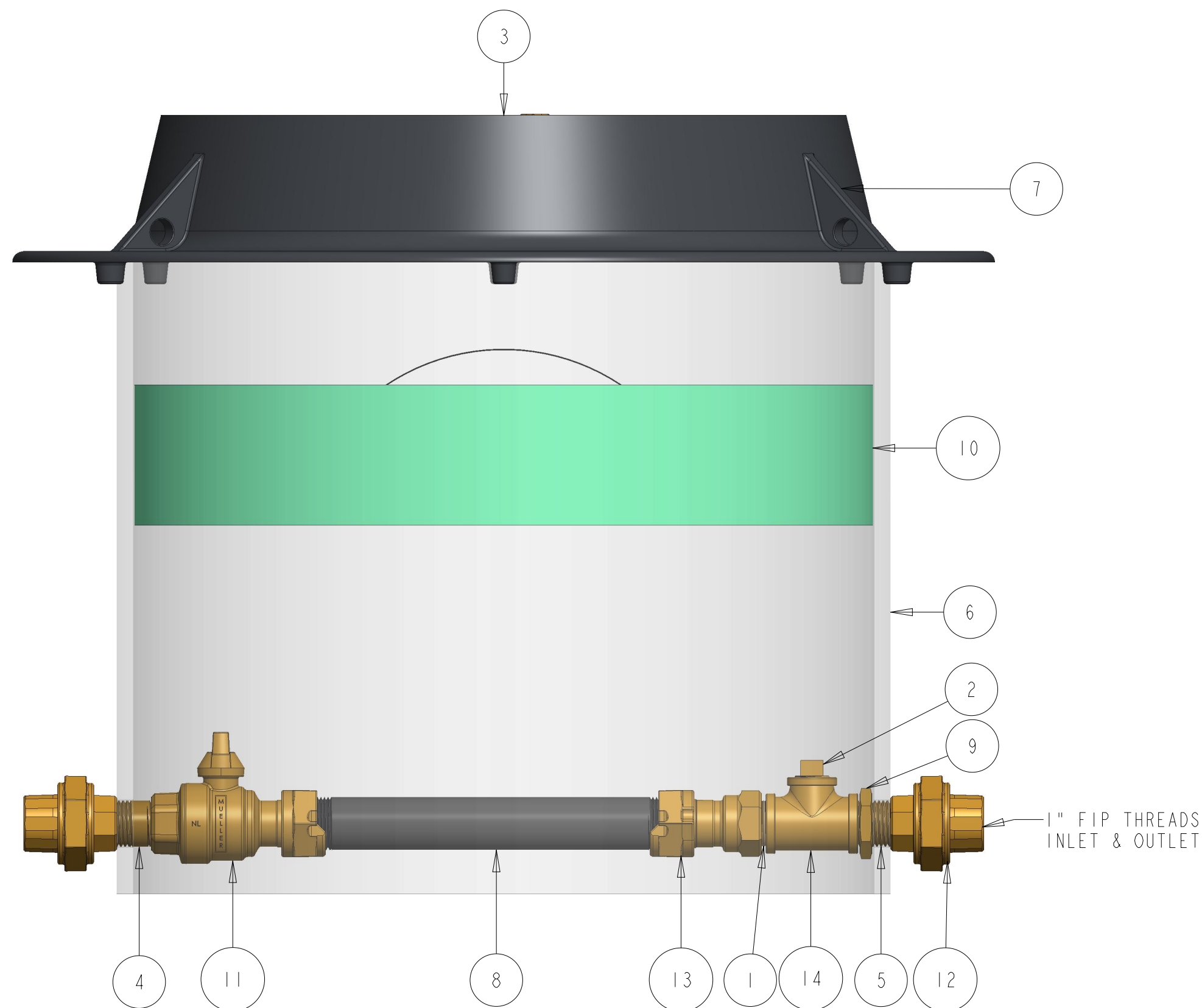


ITEM NO	PART NUMBER	QTY	DESCRIPTION	MATERIAL
1	047139	1	1" X 1-1/2" CLOSED NIPPLE	RED BRASS ASTM B43 ALLOY C23000 O61 TEMPER ANNEALED
2	199481	1	3/4" SQUARE HEAD PLUG	BRASS CDA 260 ASTM B129 C26000
3	282925	1	18" DIA CAST IRON SIDE LOCKING LID (SOLD SEPARATELY)	CAST IRON ASTM A126 CLASS B
4	548412	1	1"X2-1/8" PIPE PART	RED BRASS ASTM B43 ALLOY C23000 O61 TEMPER ANNEALED
5	548413	1	1" X 2-1/4" NIPPLE	RED BRASS ASTM B43 ALLOY C23000 O61 TEMPER ANNEALED
6	700024-2118	1	21" SHELL	SDR-51 PVC PIPE ASTM D2241 GRADE 1120
7	700098-1	1	CAST IRON FRAME (PURCHASED SEPARATELY)	CAST IRON ASTM A48 CLASS 25A
8	700250	1	1" METER JUMPER	SCH 80 PVC PIPE
9	790010	1	1" HEX NUT	ASTM B16 ALLOY C36000
10	790322	1	21" X 4" EZ INSULATING PAD (ORDER SEPARATELY)	ETHAFOAM 220 WHITE OR POLYLAM 1.7 DENSITY WHITE
11	330B24351N	1	1" INLINE BALL VALVE W/ SADDLE NUT	LEAD FREE BRASS ALLOY ASTM B584 C89833/C87850
12	330H14211N	2	1" UNION	LEAD FREE BRASS ALLOY ASTM B584 C89833/C87850
13	330H14215N	1	1" INLINE METER COUPLING	LEAD FREE BRASS ALLOY ASTM B584 C89833/C87850
14	545165E	1	1" FIP X 1" FIP X 3/4" FIP TEE	LEAD FREE BRASS PER ANSI B16.15 TABLE 3



OPTION CODE: 000646
 * 1"X1"X3/4" FIP TEE AFTER METER COUPLING ON OUTLET WITH 3/4" THREADS POINTED VERTICALLY
 * INSTALL A 3/4" PLUG INSIDE TEE
 * H14211 INSTALLED ON INLET & OUTLET
 * NO THREADS EXPOSED OUTSIDE OF PIT

DR. BY	BBF	7/14/17	UNLESS OTHERWISE NOTED	THIRD ANGLE PROJECTION	C.B. NO.
CHKR			BREAK CAST CORNER(S)---		
ENGR			BREAK MACH CORNER(S)---	PURCH.	FINISH
MGR			TOLERANCES	REF. NO.	PATT. NO.
MFG			UNLESS OTHERWISE NOTED	SCALE	
TOOL			LINEAR	ANGULAR	
FDRY			±	±	STR. NO.
MAT'L:					
MUELLER			DESCR. 1" INLINE SINGLE METER PIT 21" DIA X 18" DEPTH LOW LEAD BRASS	NUMBER 3301S2118FABS000646N	