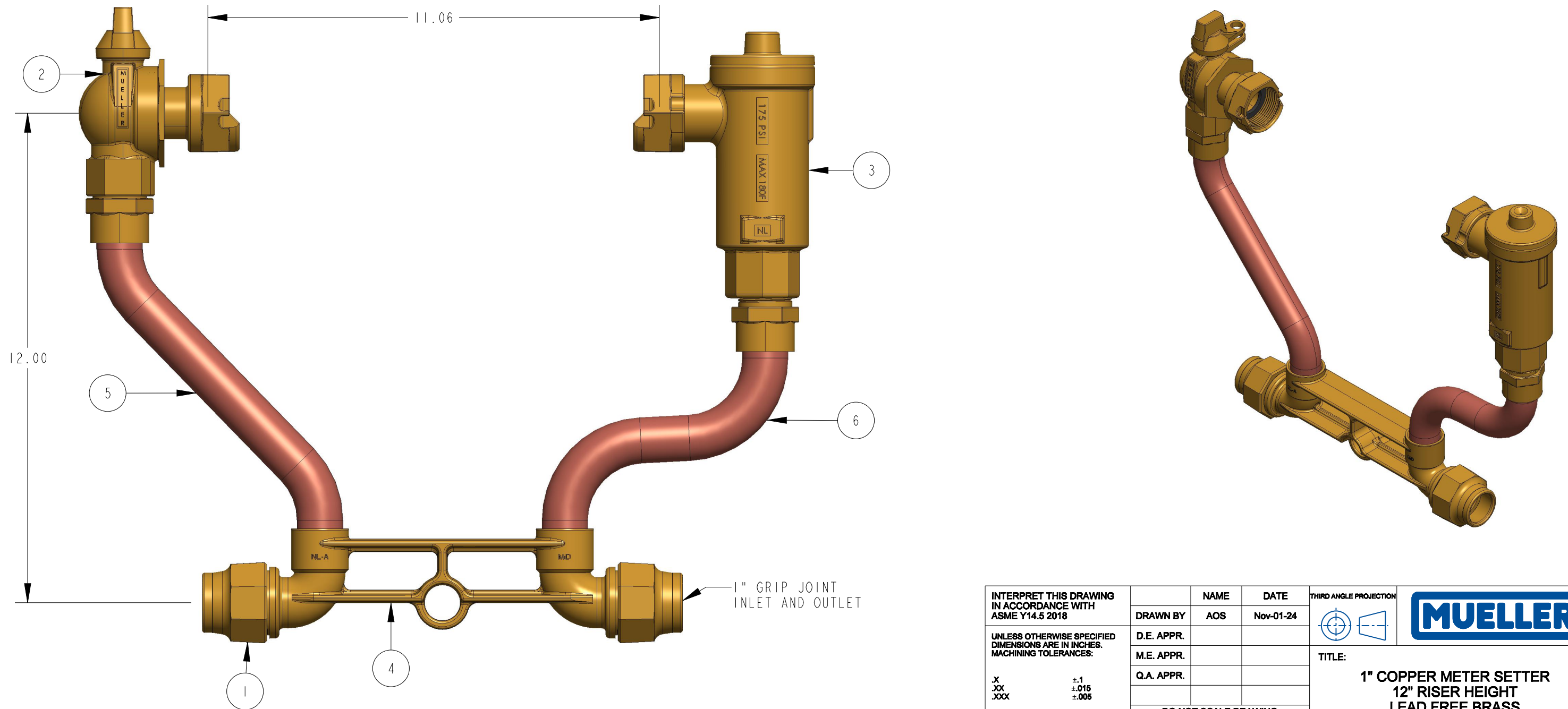


ITEM NO	PART NUMBER	QTY	DESCRIPTION	MATERIAL
1	682862	2	1" GRIP JOINT	LEAD FREE BRASS ALLOY ASTM B75 UNS C12200 050 TEMPER
2	330B24265	1	1" FULL PORT BALL VALVE	LEAD FREE BRASS ALLOY ASTM B584 C89833/C87850
3	330HI4460AN	1	1" ASSE APPROVED VERTICAL CHECK	LEAD FREE BRASS ALLOY ASTM B584 C89833/C87850
4	532219E	1	1" METER BAR W/ COMPRESSION THREADS & BRACING EYE	LEAD FREE BRASS ALLOY ASTM B584 C89833/C87850
5	680056E	1	RISER SUB ASSEMBLY	COPPER ALLOY C12200
6	682113E	1	RISER SUB ASSEMBLY	COPPER ALLOY C12200



INTERPRET THIS DRAWING IN ACCORDANCE WITH ASME Y14.5 2018 UNLESS OTHERWISE SPECIFIED DIMENSIONS ARE IN INCHES. MACHINING TOLERANCES: X ±.1 XX ±.015 XXX ±.005 ANGULAR CORNER BREAK FINISH ±1° .015/.025 125 µin. RA	NAME AOS	DATE Nov-01-24	THIRD ANGLE PROJECTION 		
	DRAWN BY D.E. APPR. M.E. APPR. Q.A. APPR.	TITLE: 1" COPPER METER SETTER 12" RISER HEIGHT LEAD FREE BRASS			
	DO NOT SCALE DRAWING ○ = CRITICAL () = REFERENCE				SIZE B
	MATERIAL: STK NUMBER:	REF.NO.	SCALE: 0.143		WT:

REVISIONS					
REV	ECR	DESCRIPTION	DRAWN BY	DATE	APPROVED
A		DRAWING CREATED	AOS	11/01/24	

TITLE TO AND OWNERSHIP OF THIS ENGINEERING DATA REMAINS IN Mueller Co. ASSENT ON THE PART OF THE RECIPIENT TO THESE CONDITIONS IS PRESUMED.

1 2 3 4 5 6

A

A

B

B

C

C

D

D

1 2 3 4 5 6