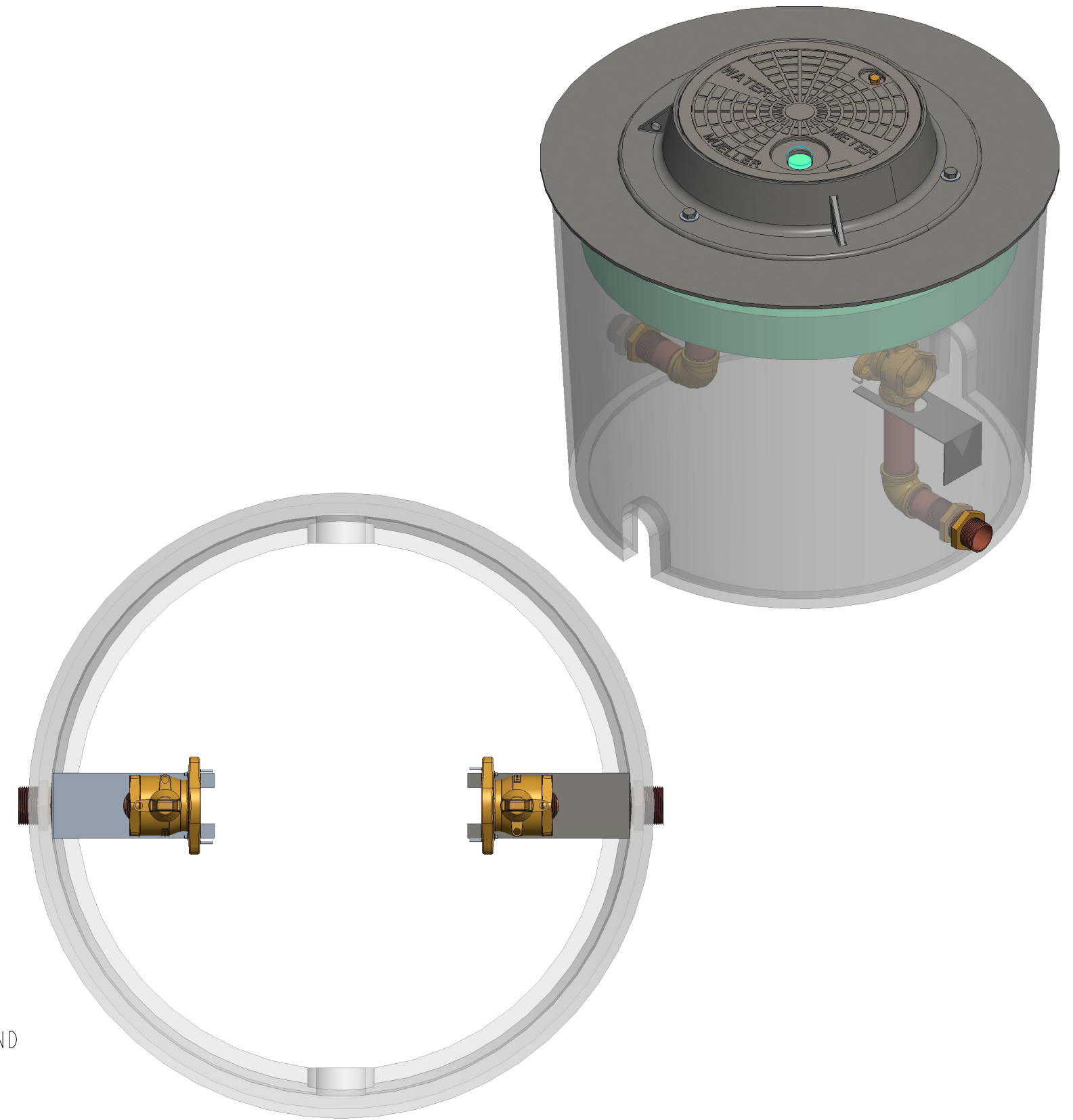
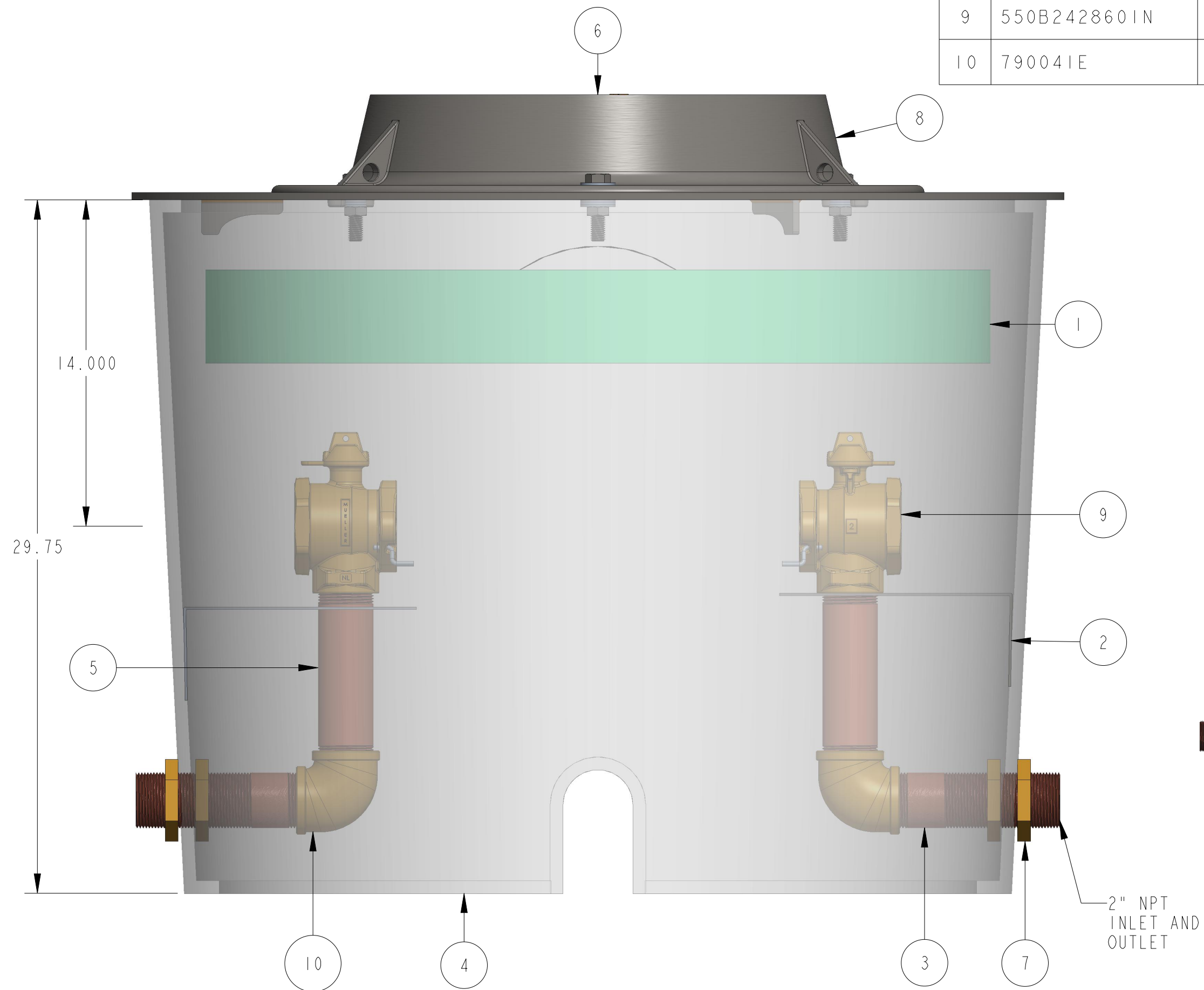


550VS3630FFBN

ITEM NO	PART NUMBER	QTY	DESCRIPTION	MATERIAL
1	547743	1	36" INSULATION PAD (SOLD SEPERATELY)	ETHAFOAM 220 WHITE OR POLYLAM 1.7 DENSITY WHITE
2	548555	2	STAINLESS STEEL SUPPORT BRACKET	304L STAINLESS STEEL
3	548556	2	BULKHEAD NIPPLE	RED BRASS ASTM B43 ALLOY C23000 HARD TEMPER
4	548868	1	36" x 30" SHELL	POLYETHELINE
5	700271	2	NIPPLE	RED BRASS ASTM B43 ALLOY C23000 HARD TEMPER
6	780113	1	18" DIA CAST IRON LID W/ RECESSED TR (SOLD SEPERATELY)	CAST IRON ASTM A125 CLASS B AND CAST BRONZE ASTM B584/B62 ALLOY C84400/C83600
7	790043	4	2" HEX NUT	ASTM B16 ALLOY C36000
8	790438	1	36" EXTENSION RING W/ 18" OPENING (SOLD SEPERATELY)	CAST IRON ASTM A48 CLASS 25A AND 0.375" A36 CARBON STEEL
9	550B2428601N	2	2" FULL PORT BALL VALVE	LEAD FREE BRASS ALLOY ASTM B584 C89833/C87850
10	790041E	2	ELBOW	CAST BRONZE ASTM B584 ALLOY C89833



DR. BY	AOD	2/25/22	UNLESS OTHERWISE NOTED	THIRD ANGLE PROJECTION	C.B. NO.
CHKR			BREAK CAST CORNER(S)---		
ENGR			BREAK MACH CORNER(S)---	PURCH.	FINISH
MGR			TOLERANCES	REF. NO.	SCALE
MFG			UNLESS OTHERWISE NOTED	STR. NO.	
TOOL			LINEAR	ANGULAR	
FDRY			±	±	
MAT'L:					
MUELLER			DESCR. 2" VAULT SINGLE METER PIT 36" DIA X 30" DEPTH LEAD FREE BRASS		NUMBER 550VS3630FFBN