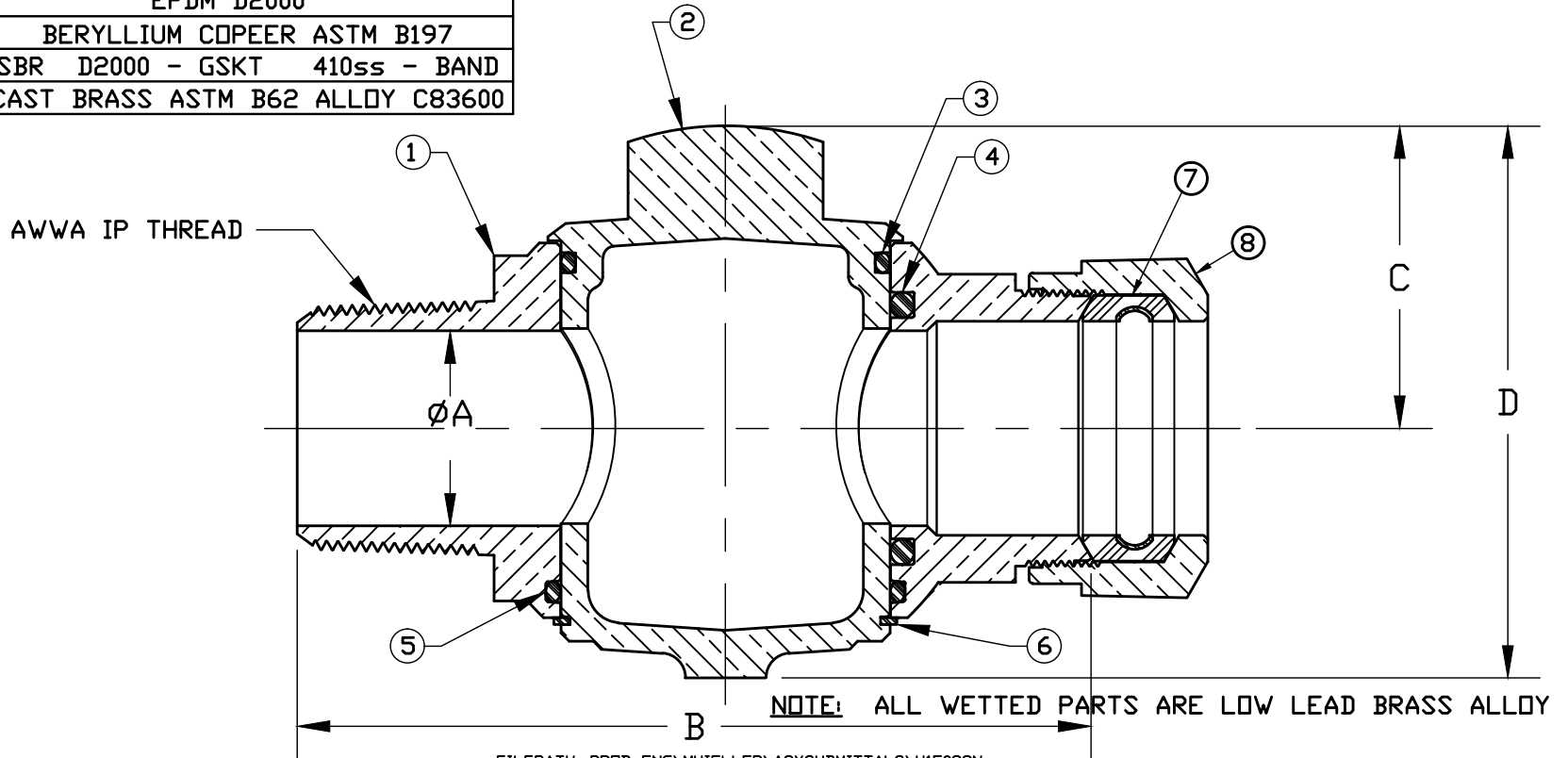


No.	DESCRIPTION	DESCRIPTION
1	BODY	CAST LOW LEAD BRASS ALLOY
2	KEY	CAST LOW LEAD BRASS ALLOY
3	ORING	EPDM D2000
4	ORING	EP D2000
5	ORING	EPDM D2000
6	RETAINING RING	BERYLLIUM COPPER ASTM B197
7	CTS GSKT SUB	SBR D2000 - GSKT 410ss - BAND
8	CONN NUT	CAST BRASS ASTM B62 ALLOY C83600

SIZE	ØA	B	C	D	KEY HEAD
1-1/2"	1.50	6.11	2.32	4.25	.56 x 1.50
2"	1.94	7.06	2.47	4.58	.62 x 1.75



FILEPATH: PROD-ENG\MUELLER\ASYSUBMITTALS\H15023N

DRFTR	JGarvin	6/30/10	Mueller Co.	
CHKR				
ENGR				
MGR				
			UNLESS OTHERWISE NOTED	THIRD ANGLE PROJECTION
			SURFACE PREPARATION:	
			BREAK CORNER(S) ---- .000	
			SURFACE FINISH -- XX RMS	REF. No.
			TOLERANCE(S):	SCALE
			LINEAR ----- ± .000	FULL
			ANGULAR ----- ± 0°00'	
			BY	DATE
			STK No:	
			MAT'L:	
			DESCR.	ORISEAL CORPORATION VALVE
				LOW LEAD BRASS - AWWA IP x 110CTS
			PER EST NO: DXXXX	EST FIN WT = 0.0000 lbs
			PART NUMBER	H15023N

PART NUMBER
H15023N
442-MRKTG