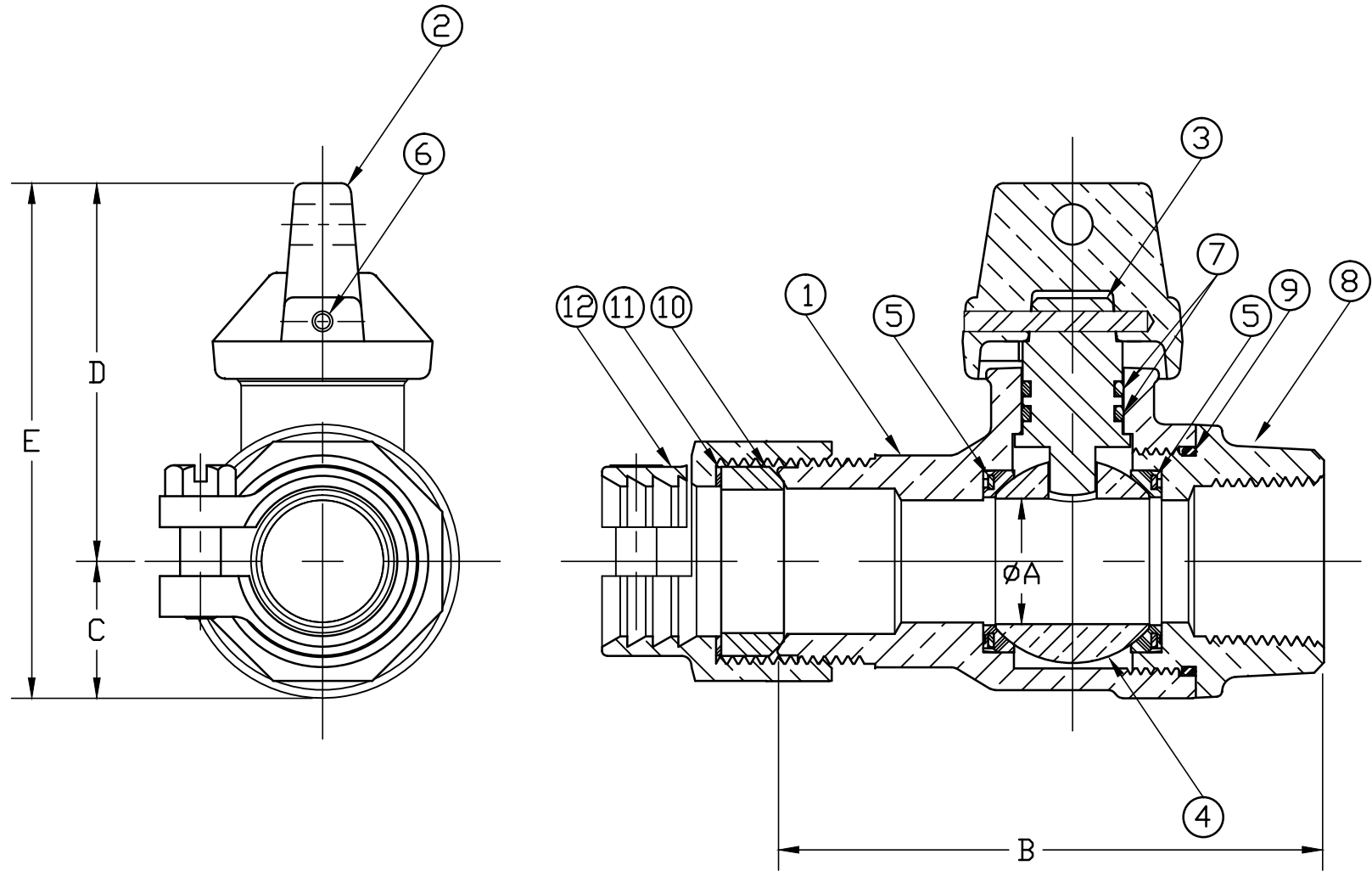


| No. | DESCRIPTION | REQ'D | MATERIAL DESCRIPTION |
|-----|--------------|-------|----------------------------------|
| 1 | BODY | 1 | CAST LOW LEAD BRASS ALLOY |
| 2 | CAP | 1 | CAST BRASS ASTM B62 ALLOY C83600 |
| 3 | STEM | 1 | LOW LEAD BRASS ALLOY |
| 4 | BALL | 1 | LOW LEAD BRASS ALLOY |
| 5 | GASKET | 2 | ASTM D2000 (NITRILE) |
| 6 | SOLID PIN | 1 | AISI 303 STAINLESS STEEL |
| 7 | O-RING | 2 | ASTM D2000 (EP) |
| 8 | END PIECE | 1 | CAST LOW LEAD BRASS ALLOY |
| 9 | O-RING | 1 | ASTM D2000 (EP) |
| 10 | PJ GASKET | 1 | ASTM D2000 (BUNA N) |
| 11 | WASHER | 1 | POLYPROPYLENE |
| 12 | CLPG NUT SUB | 1 | CAST BRASS ASTM B62 ALLOY C83600 |

| SIZE | ØA | B | C | D | E |
|-------|------|------|------|------|------|
| 3/4"R | .63 | 3.21 | .75 | 2.12 | 2.87 |
| 1" | 1.00 | 4.51 | 1.15 | 2.57 | 3.72 |



ALL WETTED PARTS ARE LOW LEAD BRASS ALLOY

FILEPATH: PROD-ENG\MUELLER\APPROVED\P25172N

| | | | | | | | | | | | | | |
|--|--|--|--|--|--|-------|-----|---------|---|--|---|---------|---|
| | | | | | | DRFTR | RWB | 7/19/13 | Mueller Co. | | UNLESS OTHERWISE NOTED THIRD ANGLE PROJECTION | | |
| | | | | | | CHKR | | | | | | | SURFACE PREPARATION: BREAK CORNER(S) ---- .000 SURFACE FINISH --XXX RMS |
| | | | | | | ENGR | | | | | TOLERANCE(S): LINEAR ----- ± .000 ANGULAR ----- ± 0°00' | | |
| | | | | | | MGR | | | | | | BY | DATE |
| | | | | | | | | | STK No: | | | | |
| | | | | | | | | | MAT'L: | | | | |
| | | | | | | | | | DESCR. | | | | |
| | | | | | | | | | INLINE LLB BALL CURB VALVE PJ CTS x FIP CONNX ASSEMBLY | | | | |
| | | | | | | | | | | | DWG NUMBER | P25172N | |
| | | | | | | | | | PER EST NO: DXXXX EST FIN WT = 0.0000 lbs | | | | |

DWG NUMBER
P25172N
MRKTNG

TITLE TO AND OWNERSHIP OF THIS ENGINEERING DATA REMAINS IN Mueller Co. NO USE IS TO BE MADE OF THIS DATA EXCEPT AS SPECIFICALLY AUTHORIZED BY Mueller Co. ASSENT ON THE PART OF THE RECIPIENT TO THESE CONDITIONS IS PRESUMED