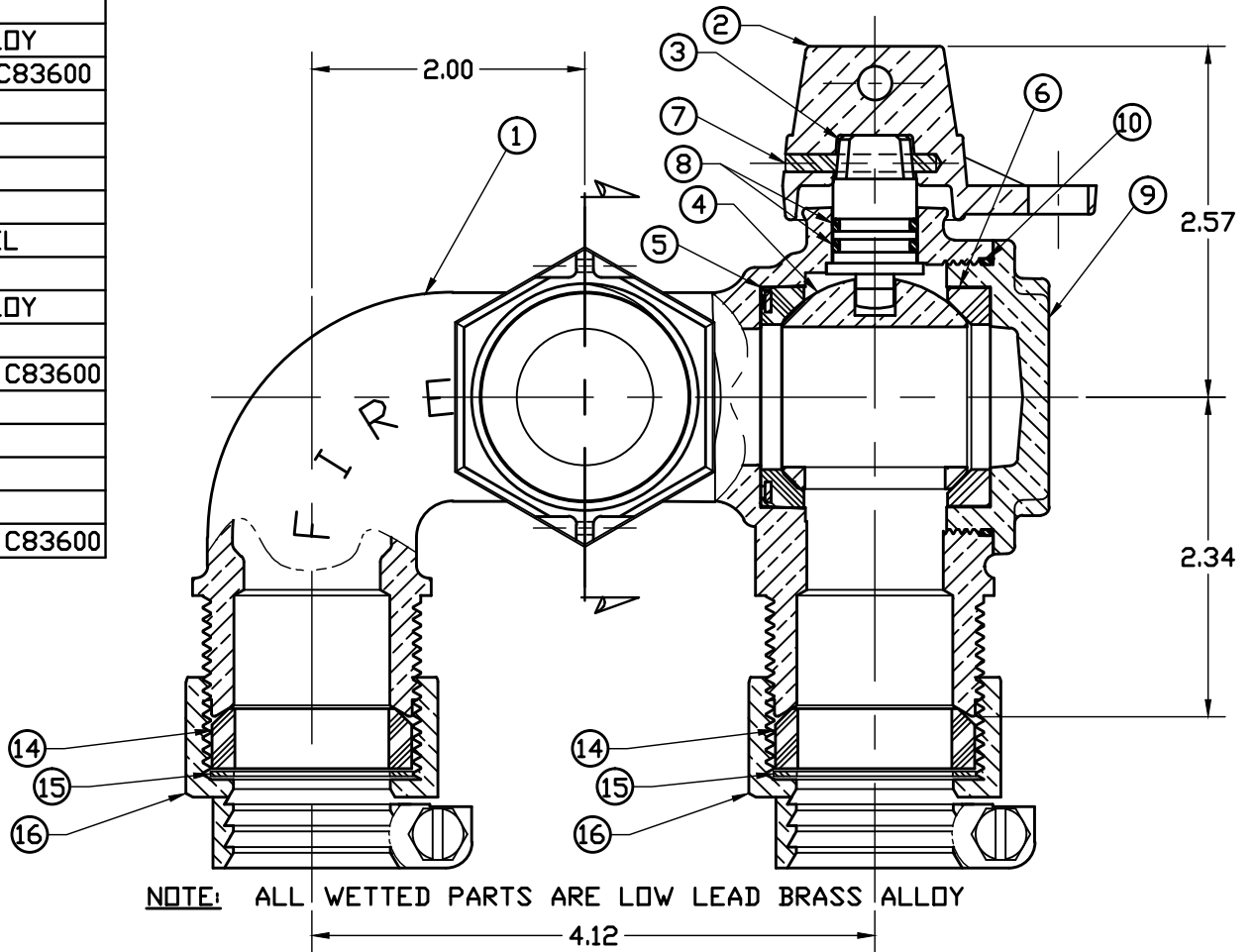
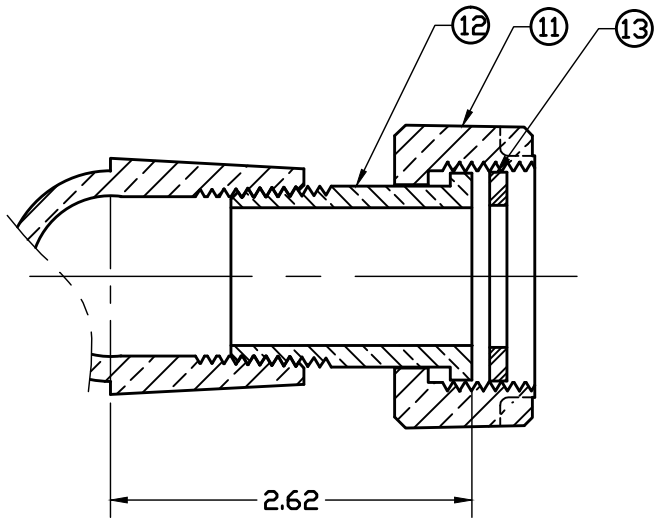


| No. | DESCRIPTION   | MATERIAL DESCRIPTION             |
|-----|---------------|----------------------------------|
| 1   | BODY          | CAST LOW LEAD BRASS ALLOY        |
| 2   | CAP           | CAST BRASS ASTM B62 ALLOY C83600 |
| 3   | STEM          | LOW LEAD BRASS ALLOY             |
| 4   | BALL          | LOW LEAD BRASS ALLOY             |
| 5   | SEAT (RUBBER) | NITRILE ASTM D2000               |
| 6   | SEAT (DELRIN) | (WHITE) DELRIN                   |
| 7   | SOLID PIN     | AISI 303 STAINLESS STEEL         |
| 8   | O-RING        | EP ASTM D2000                    |
| 9   | END CAP       | CAST LOW LEAD BRASS ALLOY        |
| 10  | O-RING        | EP ASTM D2000                    |
| 11  | PLAIN NUT     | CAST BRASS ASTM B62 ALLOY C83600 |
| 12  | TAILPIECE     | LOW LEAD BRASS ALLOY             |
| 13  | RUBBER GSKT   | NITRILE ASTM D2000               |
| 14  | COMP GASKET   | BUNA N ASTM D2000                |
| 15  | WASHER        | POLYPROPYLENE                    |
| 16  | CLPG NUT SUB  | CAST BRASS ASTM B62 ALLOY C83600 |



NOTE: ALL WETTED PARTS ARE LOW LEAD BRASS ALLOY

FILEPATH: PROD-ENG\MUELLER\ASYSUBMITTALS\P25250N

|   |         |             |                           |                        |      |
|---|---------|-------------|---------------------------|------------------------|------|
| DRFTR                                       | JGarvin | 2/12/10     | <b>Mueller Co.</b>        |                        |      |
| CHKR  |         |             |                           |                        |      |
| ENGR  |         |             |                           |                        |      |
| MGR   |         |             |                           |                        |      |
|   |         |             | UNLESS OTHERWISE NOTED    | THIRD ANGLE PROJECTION |      |
|   |         |             | SURFACE PREPARATION:      | REF. No. SCALE         |      |
|   |         |             | BREAK CORNER(S) ---- .000 |                        |      |
|   |         |             | SURFACE FINISH -- XX RMS  | FULL                   |      |
|   |         |             | TOLERANCE(S):             |                        |      |
|   |         |             | LINEAR ----- ± .000       |                        |      |
|   |         |             | ANGULAR ----- ± 0°00'     |                        |      |
|   |         |             | BY DATE                   |                        |      |
|   |         |             | STK No:                   |                        |      |
|   |         |             | MAT'L:                    |                        |      |
|   |         |             | DESCR.                    |                        |      |
| REV   | ECR     | DESCRIPTION | DATE                      | BY                     | CHKR |
| PER EST NO: XX-XXXX EST FIN WT = 0.0000 lbs |         |             |                           |                        |      |
| 1" RESIDENTAL FIRE VALVE LLB                |         |             |                           | PART NUMBER            |      |
| 360° TURN (PJ CTS × METER × PJ CTS)         |         |             |                           | P25250N                |      |

PART NUMBER  
P25250N  
442-MRKTG