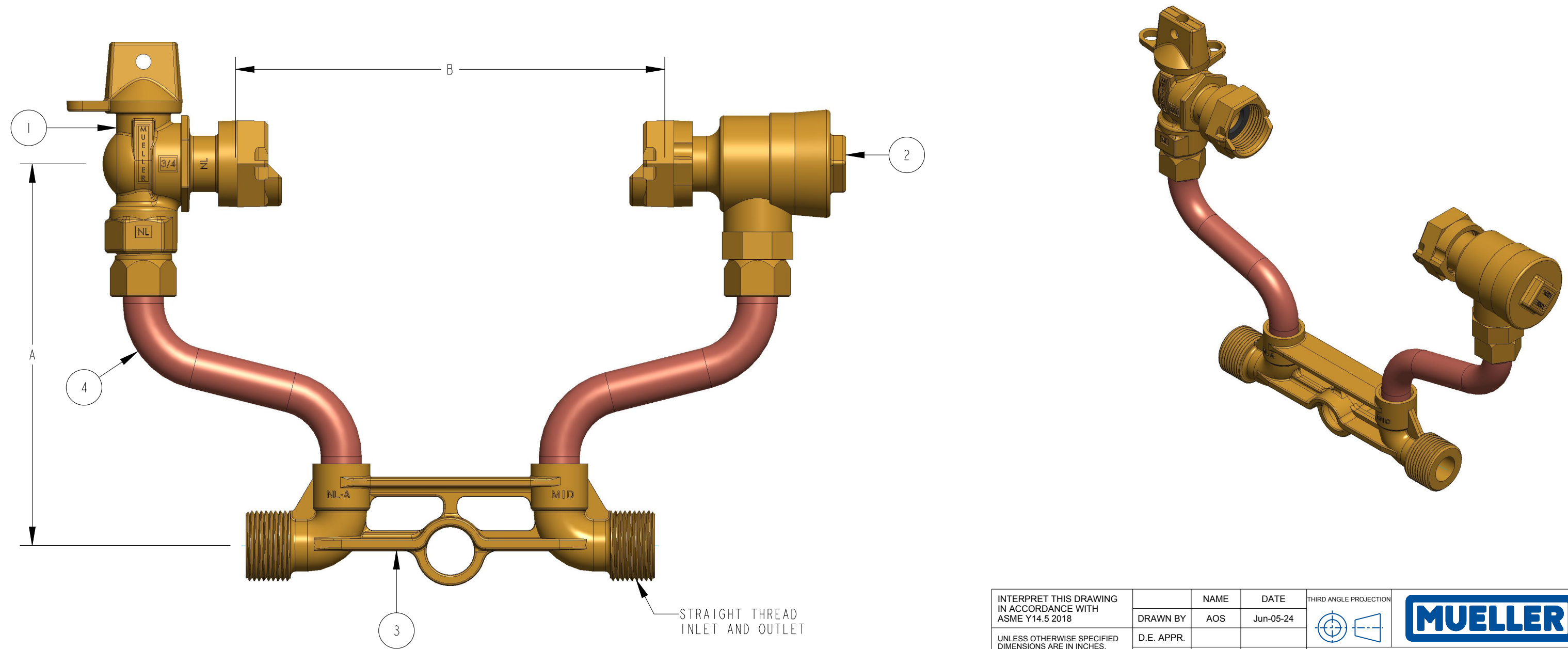


	1	2	3	4
METER SIZE	5/8"	5/8"X3/4"	3/4"	1"
A (MINIMUM)	7"	7"	8"	10"
B	7-7/8"	7-7/8"	9-3/8"	11-1/8"
REDUCED PORT BALL VALVE	203B2426551RN	215B2426551RN	215B2426551RN	330B2426551RN
ASSE DUAL CHECK VALVE	203HI4244AN	215HI4244AN	215HI4244AN	330HI4244AN
METER BAR	532079E	532086E	508597E	532221E

ITEM NO	PART NUMBER	QTY	DESCRIPTION	MATERIAL
1	B2426551RN	1	REDUCED PORT BALL VALVE	LEAD FREE BRASS ALLOY ASTM B584 C89833/C87850
2	HI4244AN	1	ASSE DUAL CHECK VALVE	LEAD FREE BRASS ALLOY ASTM B584 C89833/C87850
3		1	METER BAR	LEAD FREE BRASS ALLOY ASTM B584 C89833/C87850
4		2	RISER SUB ASSEMBLY	COPPER ALLOY C12200



INTERPRET THIS DRAWING IN ACCORDANCE WITH ASME Y14.5 2018		NAME	DATE	THIRD ANGLE PROJECTION	
UNLESS OTHERWISE SPECIFIED DIMENSIONS ARE IN INCHES. MACHINING TOLERANCES:		DRAWN BY	AOS	Jun-05-24	
.X ±.1	.XX ±.015	D.E. APPR.		TITLE:	
.XXX ±.005		M.E. APPR.		COPPER METER SETTER	
ANGULAR ±1°	CORNER BREAK .015/.025	Q.A. APPR.		LEAD FREE BRASS	
FINISH 125 µin. RA		DO NOT SCALE DRAWING		SIZE	DWG. NUMBER
		○ = CRITICAL () = REFERENCE		B	B24118R2A--N
MATERIAL:		REF.NO.		SCALE: 0.250	WT:
STK NUMBER:		REF.NO.		SHEET 1 OF 1	

REVISIONS					
REV	ECR	DESCRIPTION	DRAWN BY	DATE	APPROVED
A		DRAWING CREATED	AOS	6/05/24	

TITLE TO AND OWNERSHIP OF THIS ENGINEERING DATA REMAINS IN Mueller Co. ASSENT ON THE PART OF THE RECIPIENT TO THESE CONDITIONS IS PRESUMED.