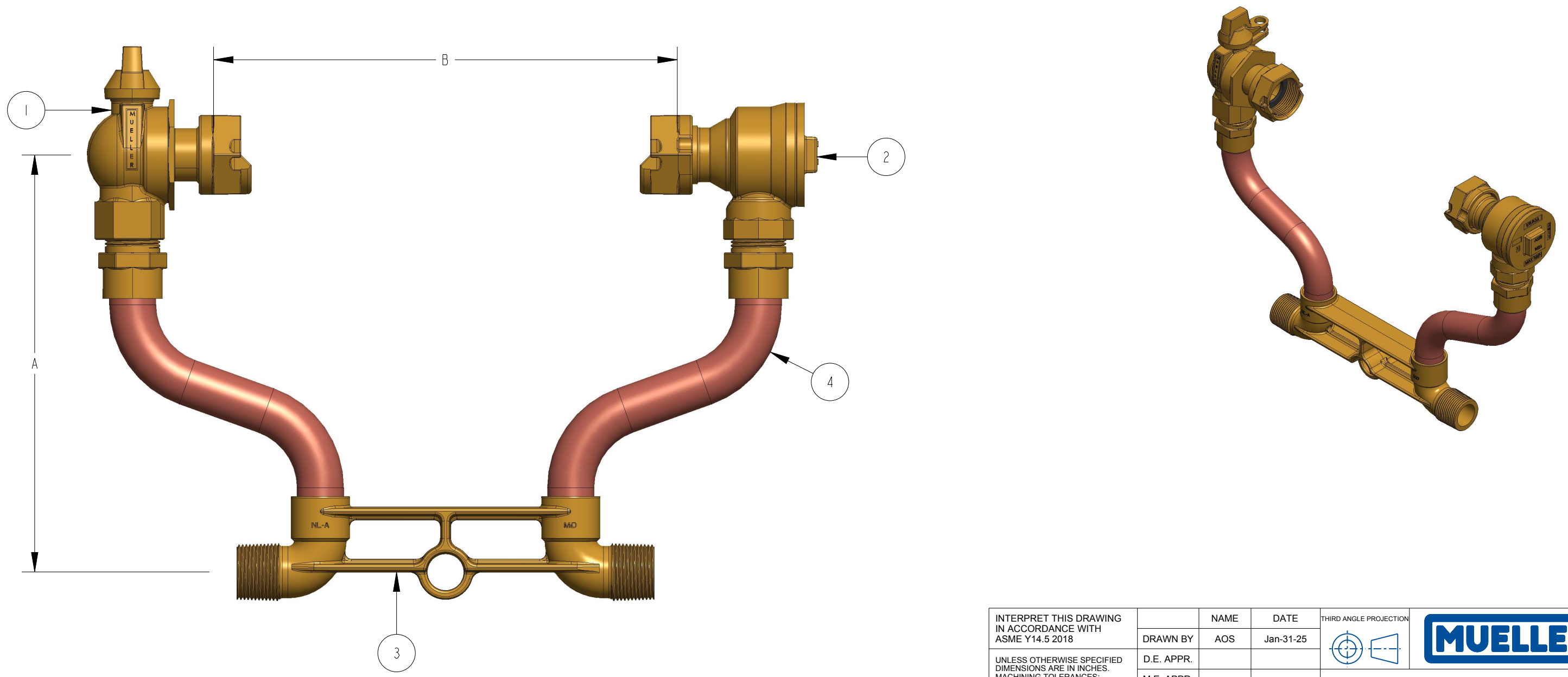


	1	2	3	4
METER SIZE	5/8"	5/8"x3/4"	3/4"	1"
A (MINIMUM)	7"	7"	8"	10"
B	7-7/8"	7-7/8"	9-5/16"	11-1/8"
FULL PORT BALL VALVE	203B24265N	215B24265N	215B24265N	330B24265N
ASSE APPROVED CHECK VALVE	203HI4244AN	215HI4244AN	215HI4244AN	330HI4244AN
METER BAR	532075E	532075E	507858E	532226E

ITEM NO	PART NUMBER	QTY	DESCRIPTION	MATERIAL
1	B24265N	1	REDUCED PORT BALL VALVE	LEAD FREE BRASS ALLOY ASTM B584 C89833/C87850
2	HI4244AN	1	ANGLE DUAL CHECK VALVE ASSE APPROVED	LEAD FREE BRASS ALLOY ASTM B584 C89833/C87850
3		1	METER BAR	LEAD FREE BRASS ALLOY ASTM B584 C89833/C87850
4		2	RISER SUB ASSEMBLY	COPPER ALLOY C12200



INTERPRET THIS DRAWING IN ACCORDANCE WITH ASME Y14.5 2018	DRAWN BY	AOS	DATE	Jan-31-25	THIRD ANGLE PROJECTION	
	D.E. APPR.		M.E. APPR.			
UNLESS OTHERWISE SPECIFIED DIMENSIONS ARE IN INCHES. MACHINING TOLERANCES:	DO NOT SCALE DRAWING		Q.A. APPR.		SIZE	
.X ±.1 .XX ±.015 .XXX ±.005	MATERIAL:		REF.NO.		DWG. NUMBER	
ANGULAR CORNER BREAK FINISH ±1° .015/.025 125 µin. RA	STK NUMBER:		SCALE: 0.167		REV	
TITLE TO AND OWNERSHIP OF THIS ENGINEERING DATA REMAINS IN Mueller Co. ASSENT ON THE PART OF THE RECIPIENT TO THESE CONDITIONS IS PRESUMED.		REF.NO.		WT:		A
		REF.NO.		SHEET 1 OF 1		

REVISIONS					
REV	ECR	DESCRIPTION	DRAWN BY	DATE	APPROVED
A		DRAWING CREATED	AOS	1/31/25	

TITLE TO AND OWNERSHIP OF THIS ENGINEERING DATA REMAINS IN Mueller Co. ASSENT ON THE PART OF THE RECIPIENT TO THESE CONDITIONS IS PRESUMED.

SIZE	DWG. NUMBER	REV
B2434-R-58N	389B2434-2A--N	A
SCALE: 0.167	WT:	SHEET 1 OF 1