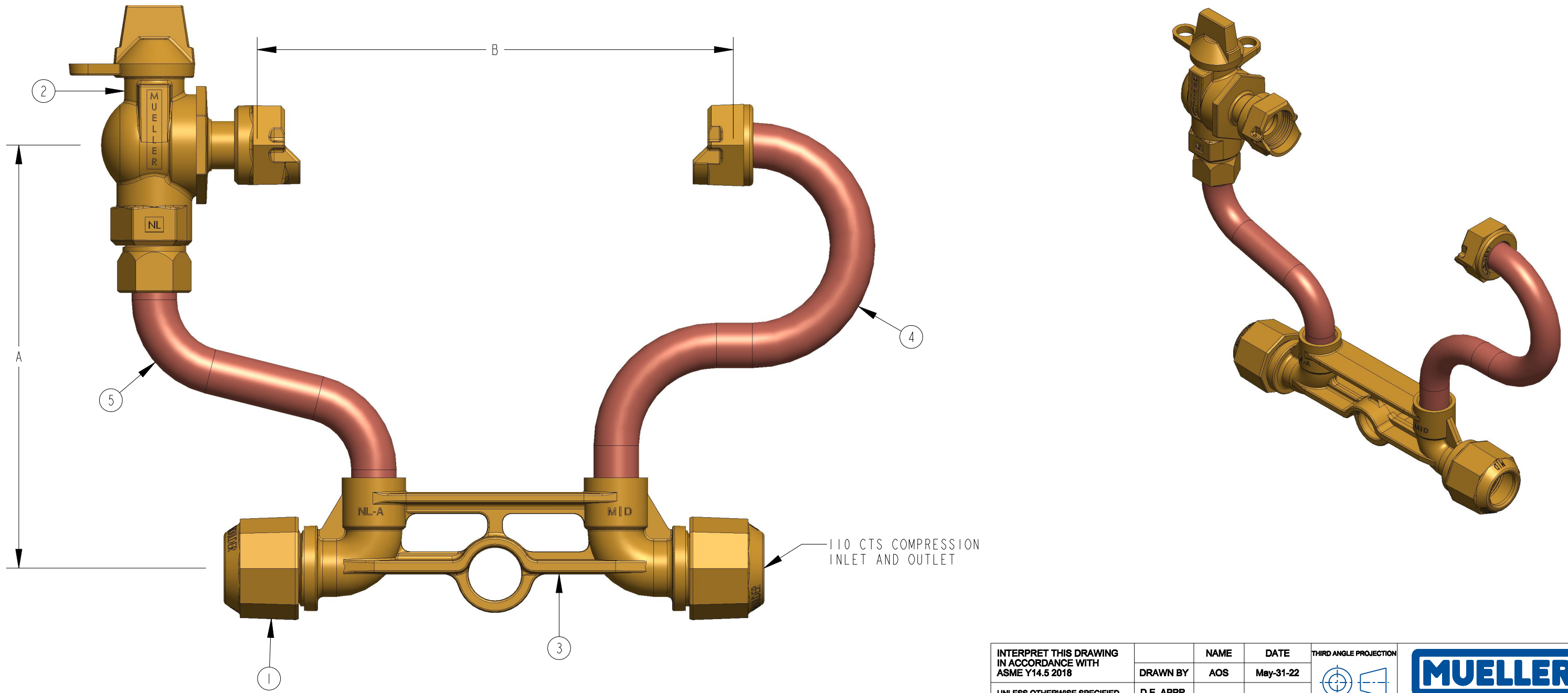


	1	2	3
METER SIZE	5/8"	5/8"X3/4"	3/4"
A (MINIMUM)	7"	7"	8"
B	7-7/8"	7-7/8"	9-5/16"
CTS 110 COMPRESSION NUT	507831	507831	507831
REDUCED PORT BALL VALVE	203B242265RN	215B242265RN	215B242265RN
METER BAR WITH CTS COMPRESSION ENDS	532077E	532077E	528038E

ITEM NO	PART NUMBER	QTY	DESCRIPTION	MATERIAL
1		2	CTS 110 COMPRESSION NUT	LEAD FREE BRASS ALLOY ASTM B584 C89833/C87850
2	B242265RN	1	REDUCED PORT BALL VALVE	LEAD FREE BRASS ALLOY ASTM B584 C89833/C87850
3		1	METER BAR WITH CTS COMPRESSION ENDS	LEAD FREE BRASS ALLOY ASTM B584 C89833/C87850
4		1	RISER SUB ASSEMBLY W/ SADDLE NUT	COPPER ALLOY C12200
5		1	RISER SUB ASSEMBLY	COPPER ALLOY C12200



REVISIONS					
REV	ECR	DESCRIPTION	DRAWN BY	DATE	APPROVED
A		DRAWING CREATED	AOS	5/31/22	
B		REMOVED 1" SIZE UPDATED FORMAT	AOS	2/13/25	

INTERPRET THIS DRAWING IN ACCORDANCE WITH ASME Y14.5 2018 UNLESS OTHERWISE SPECIFIED DIMENSIONS ARE IN INCHES. MACHINING TOLERANCES: .X ±.1 .XX ±.015 .XXX ±.005 ANGULAR CORNER BREAK FINISH ±1° .015/.025 125 µin. RA		NAME: AOS DATE: May-31-22 D.E. APPR. M.E. APPR. Q.A. APPR.	THIRD ANGLE PROJECTION 	
TITLE: COPPER METER SETTER LEAD FREE BRASS				
DO NOT SCALE DRAWING ○ = CRITICAL ( ) = REFERENCE		SIZE: B DWG. NUMBER: 221B2470-R-N REV: B	SCALE: 0.200 WT: SHEET 1 OF 1	
MATERIAL: STK NUMBER:		REF. NO.		

TITLE TO AND OWNERSHIP OF THIS ENGINEERING DATA REMAINS IN Mueller Co. ASSENT ON THE PART OF THE RECIPIENT TO THESE CONDITIONS IS PRESUMED.