

NOMINAL MAIN SIZE	PIPE OD RANGE	TYPE (2B)	THREAD TYPE	AVAILABLE TAP DIAMETERS					
				.50"	.75"	1"	1.25	1.5"	2"
4"	4.74"-5.32"	BR2B0474	CC OR IP	050	075	100	---	---	---
	4.74"-5.10"	BR2B0474	CC OR IP	---	---	---	125	125	125
	5.10"-5.40"	BR2B0510	CC OR IP	---	---	---	125	150	200
6"	6.84"-7.45"	BR2B0684	CC OR IP	050	075	100	125	150	200
8"	8.99"-9.67"	BR2B0899	CC OR IP	050	075	100	125	150	200
10"	11.04"-12.12"	BR2B1104	CC OR IP	050	075	100	125	150	200
12"	13.14"-14.58"	BR2B1314	CC OR IP	050	075	100	125	150	200
14"	15.22"-16.88"	BR2B1522	CC OR IP	050	075	100	125	150	200
16"	17.32"-19.19"	BR2B1732	CC OR IP	050	075	100	125	150	200
18"	18.00"-19.50"	BR2B1800	CC OR IP	050	075	100	125	150	200
20"	20.00"-21.60"	BR2B2000	CC OR IP	050	075	100	125	150	200
24"	24.00"-25.80"	BR2B2400	CC OR IP	050	075	100	125	150	200

TO DETERMINE PART NUMBER
CONCATENATE THE FOLLOWING STRING WITH NO SPACES OR COMMAS:

TYPE, THREAD TYPE, TAP DIA, AND OPTIONS

EXAMPLES:
BR2B0474CC100
BR2B0899IP200EP

IP STANDS FOR AWWA IP THREAD (FIPT)
CC STANDS FOR AWWA TAPER THREAD (CC)

1.25" ONLY AVAILABLE IN AWWA IP THREAD.

---: DESIGNATES THAT SIZE/APPLICATION IS NOT AVAILABLE.

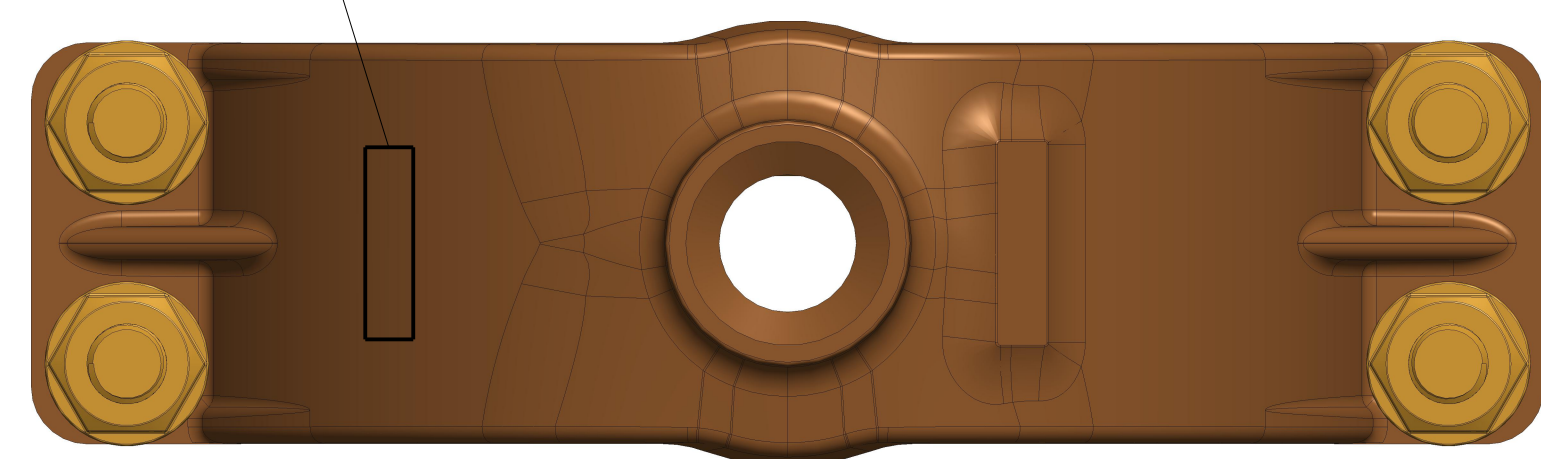
DEFAULT O-RING MATERIAL IS NBR. (B)

ADD "EP" TO END OF PART NUMBER FOR EPDM O-RING. AVAILABLE ON 4"-12" SADDLES. (B)

ALL ASSEMBLIES NSF-61 CERTIFIED.

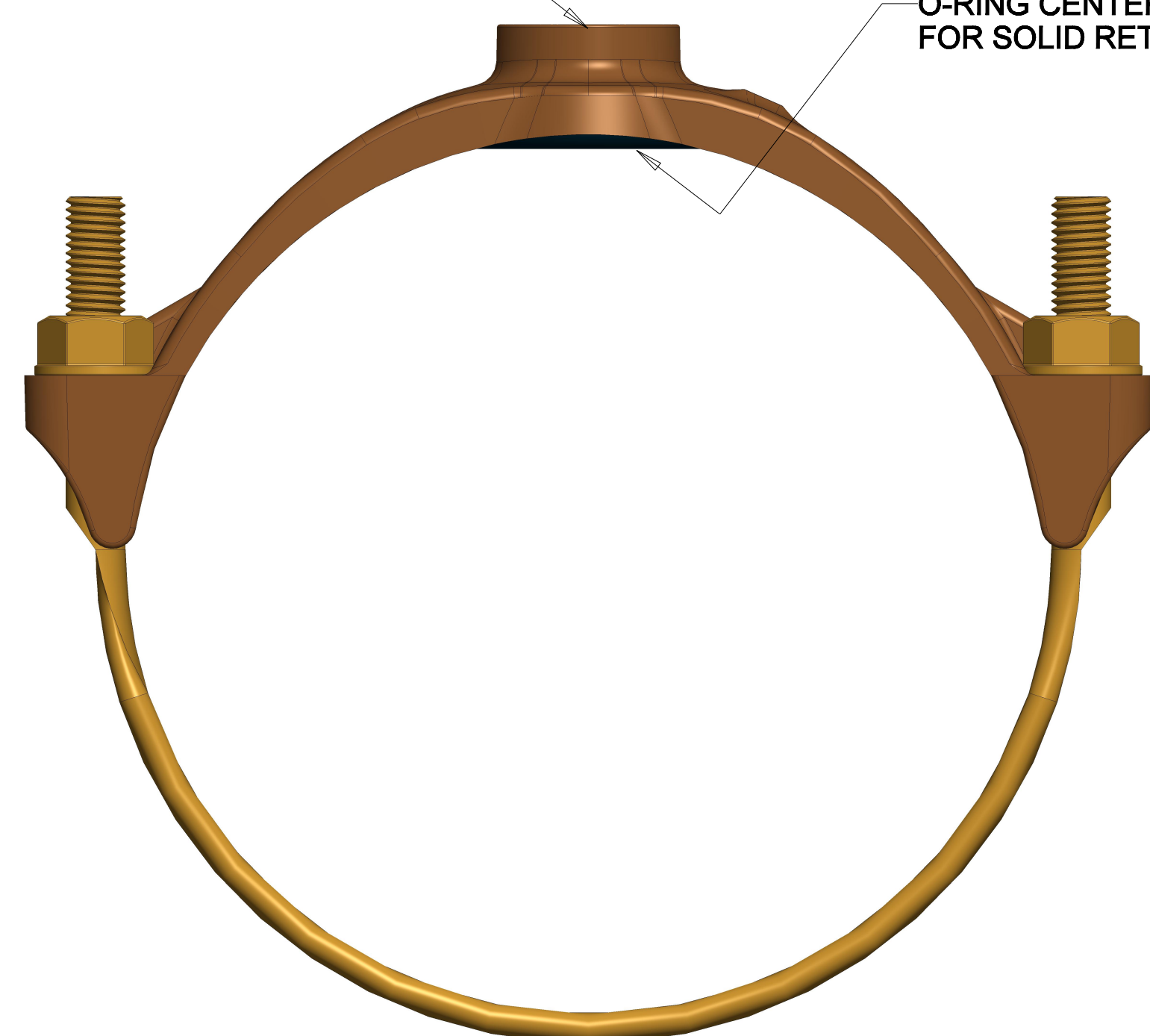
REVISIONS					
REV	ECR	DESCRIPTION	DRAWN BY	DATE	APPROVED
B		DRAWING RE-MADE ADDED 87850 MATERIAL NOTES ADDED ADDITIONAL NOTE FOR NITRILE VS EPDM O-RING OPTION CLARIFIED RANGE FOR EPDM OPTION ADDED EPDM STAMP LOCATION NOTE	ETB	08/27/2024	

(B) "EPDM" STAMP LOCATION
FOR "EP" OPTION CODE



TAPPING SIZE (SEE TABLE)

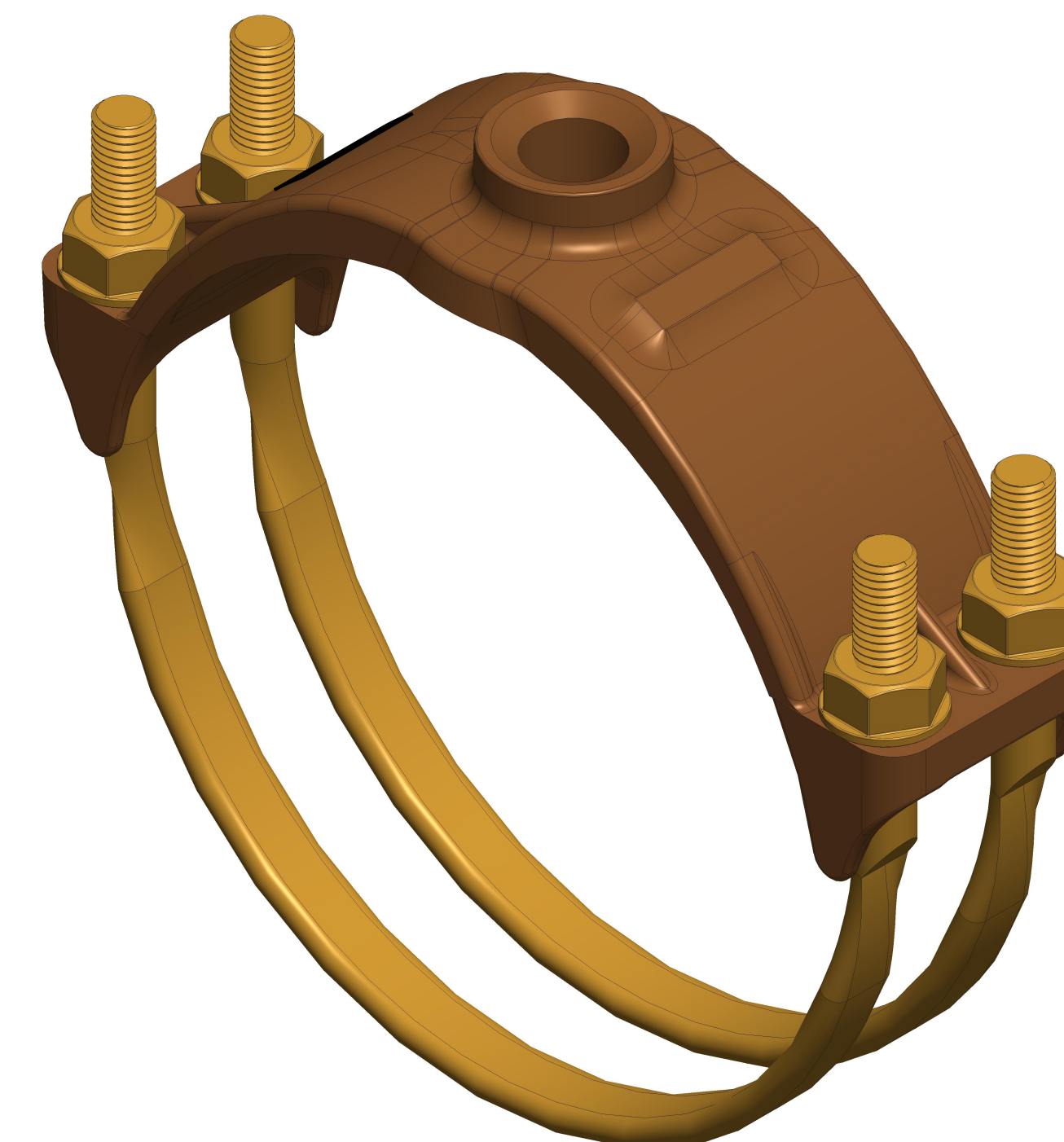
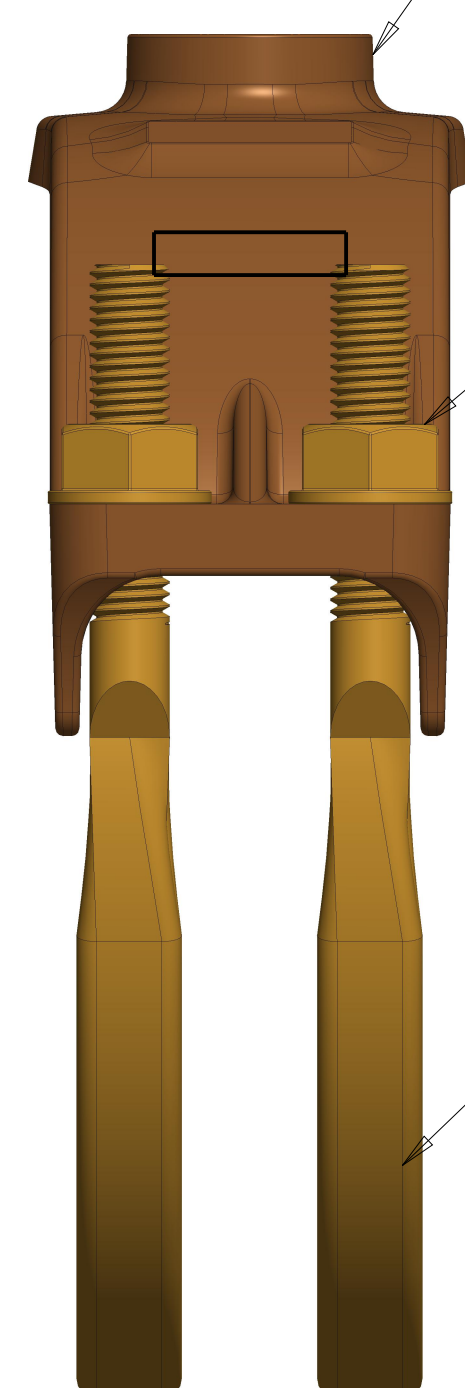
O-RING CENTERED IN GROOVE
FOR SOLID RETENTION AND PROPER SEALING



SADDLE - CAST LEAD FREE BRASS ALLOY
C83600/C87850 (B)

FLANGE NUT - CAST BRASS ALLOY
C83600

STRAP - BRASS ROD
ROLLED THREADS
C65100



BR2B SADDLE SHOWN ABOVE

INTERPRET THIS DRAWING IN ACCORDANCE WITH ASME Y14.5 2018		NAME DRAWN BY: ETB	DATE Aug-27-24	THIRD ANGLE PROJECTION				
UNLESS OTHERWISE SPECIFIED DIMENSIONS ARE IN INCHES CASTING TOLERANCES:		D.E. APPR.	M.E. APPR.	Q.A. APPR.		TITLE: 4"-24" BR-STYLE SERVICE SADDLE BRONZE SERVICE SADDLE WITH DOUBLE BRONZE STRAPS		
UP TO 8" ±.000 8.01" - 12" ±.005 12.01" - 24" ±.000 ABOVE 24" ±.005 RADI: .000 ANGLES 90° ±.125 UNLESS 1ST DRAFT IS 1"		DO NOT SCALE DRAWING			SIZE: D	DWG. NUMBER: BR2B_SUBMITTAL	REV: A	
TITLE TO AND OWNERSHIP OF THIS ENGINEERING DATA REMAINS IN Mueller Co. ASSENT ON THE PART OF THE RECIPIENT TO THESE CONDITIONS IS PRESUMED.		MATERIAL: SEE PRINT		SKT NUMBER:	REF. NO.	SCALE: 0.500	WT:	SHEET 1 OF 1