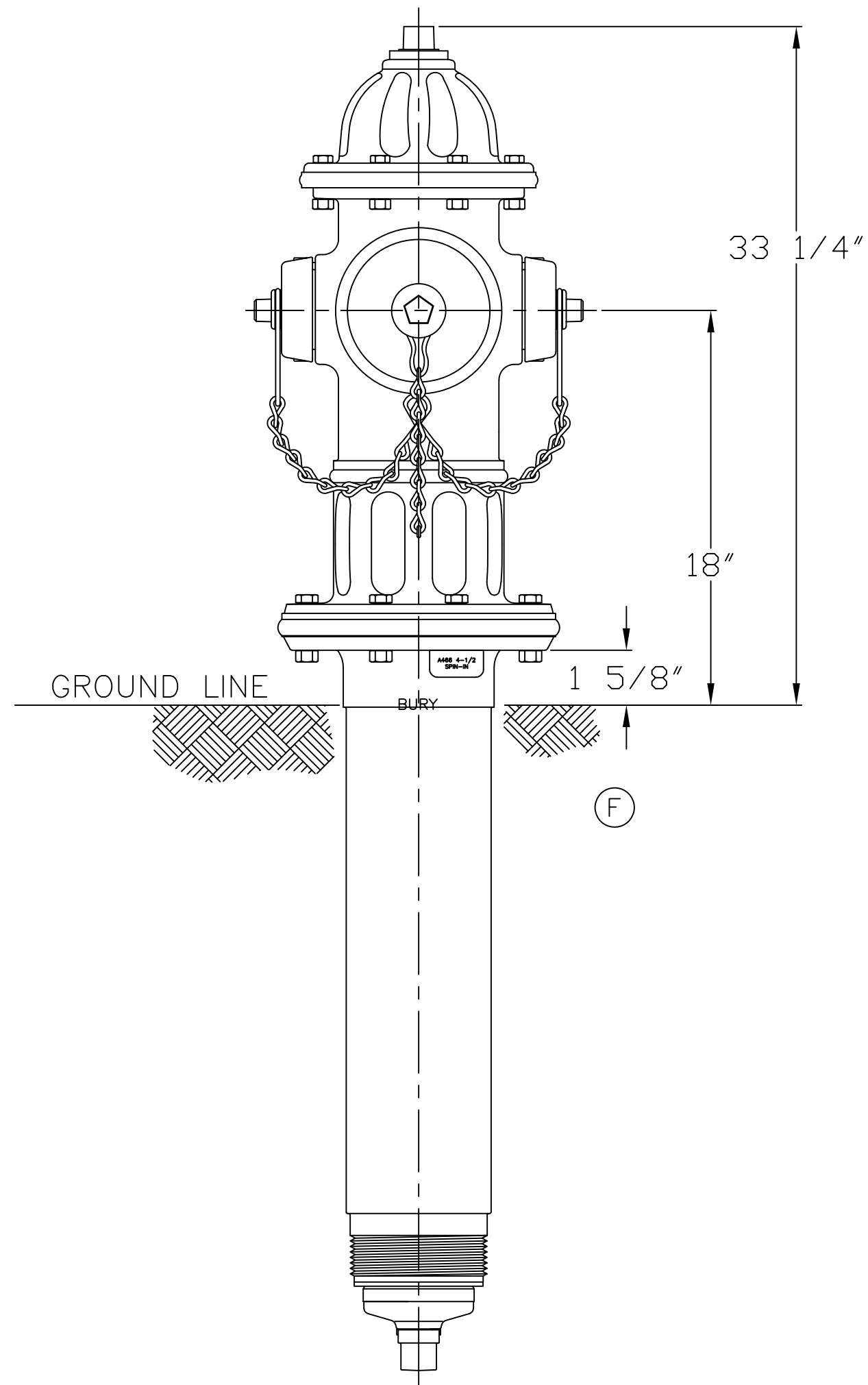


4 1/2" A466 & 5 1/4" A467 CENTURION W/ TWO HOSE NOZZLES & ONE PUMPER NOZZLE  
250 P.S.I. W.P. - 500 P.S.I. TEST, RD SPIN-IN HYDRANT

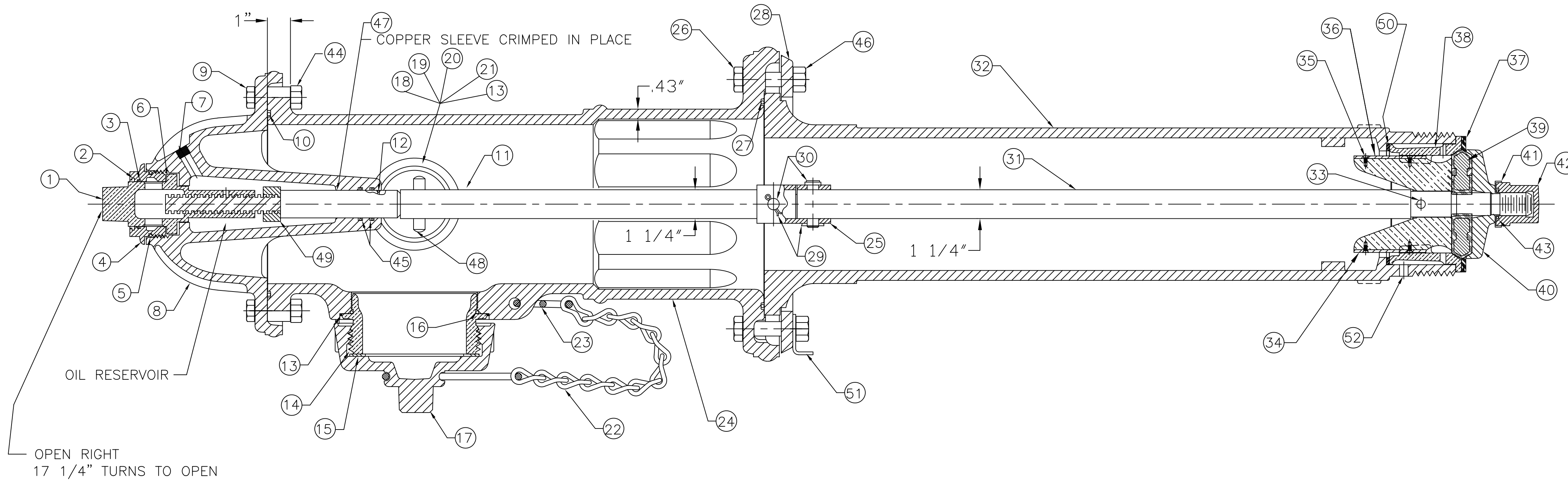


PARTS LIST						
ITEM	DESCRIPTION	REQ'D	MATERIAL	A.S.T.M.	CURRENT MATERIAL DESCRIPTION	ALTERNATE STANDARD
1	OPERATING NUT	1	BRONZE	B-62	ALLOY C83600	B584 C87850 OR C87600
2	WIPER RING	1	RUBBER	D-2000	EPDM	
3	HOLD DOWN NUT O-RING	1	RUBBER	D-2000	BUNA N	
4	HOLD DOWN NUT	1	BRONZE	B-62	ALLOY C83600	B584 C87850 OR C87600
5	BONNET O-RING	1	RUBBER	D-2000	BUNA N	
6	ANTI-FRICTION WASHER	1	CELCON		GRADE M90-04	
7	OIL FILLER PLUG	1	BRASS	B-16	ALLOY 360	
8	BONNET	1	CAST IRON	A-126	CLASS B	
9	BONNET HEX CAP SCREW	8	STEEL	SAE J429	GR 5 GALVANIZED	
10	TOP UPPER BARREL O-RING	1	RUBBER	D-2000	BUNA N	
11	UPPER STEM	1	CARBON STEEL	A-576	GR 1144T	
12	STEM O-RING	1	RUBBER	D-2000	BUNA N	
13	NOZZLE LOCK	3	STAINLESS STEEL	A-276	305 OR 410	
14	PUMPER NOZZLE	1	BRASS	B-584	ALLOY C89833	B584 C87850 OR C87600
15	PUMPER NOZZLE CAP GASKET	1	RUBBER	D-2000	NEOPRENE	
16	PUMPER NOZZLE O-RING	1	RUBBER	D-2000	BUNA N	
17	PUMPER NOZZLE CAP	1	CAST IRON	A-126	CLASS B	
18	HOSE NOZZLE	2	BRASS	B-584	ALLOY C89833	B584 C87850 OR C87600
19	HOSE NOZZLE CAP GASKET	2	RUBBER	D-2000	NEOPRENE	
20	HOSE NOZZLE O-RING	2	RUBBER	D-2000	BUNA N	
21	HOSE NOZZLE CAP	2	CAST IRON	A-126	CLASS B	
22	CAP CHAIN	3	STEEL		ELECTRO GALV.	
23	CHAIN HOOK	1	STEEL		ELECTRO GALV.	
24	UPPER BARREL	1	CAST IRON	A-126	CLASS B	
25	TRAFFIC STEM COUPLING	1	STAINLESS STEEL	A-890	1.5% SILICON MAX.	
26	TRAFFIC FLANGE HEX CAP SCREW	8	STEEL	SAE J429	GR 5 GALVANIZED	
27	BOTTOM UPPER BARREL O-RING	1	RUBBER	D-2000	BUNA N	
28	TRAFFIC FLANGE	1	CAST IRON	A-126	CLASS B	
29	REUSABLE COTTER PIN	2	STAINLESS STEEL		18-8	
30	CLEVIS PIN	2	STAINLESS STEEL	A-276	300 SERIES	

SEE CAT. RECORD FOR RESPECTIVE PARTS OR SUB. ASS'YS

ITEM	DESCRIPTION	REQ'D	MATERIAL	A.S.T.M.	CURRENT MATERIAL DESCRIPTION	ALTERNATE STANDARD
31	LOWER STEM	1	CARBON STEEL	A-576	GRADE 1144T	
32	LOWER BARREL	1	CAST IRON	A-126	CLASS B	
33	STEM PIN	1	STAINLESS STEEL	A-276	300 SERIES	
34	DRAIN VALVE FACING	2	H.D. POLYETHYLENE		LS 5660-00	
35	DRAIN VALVE FACING SCREW	4	STAINLESS STEEL	A-276	300 SERIES	
36	UPPER VALVE PLATE	1	BRASS	B-584	ALLOY C89833	B584 C87850 OR C87600
37	BOTTOM SEAT O-RING	1	RUBBER	D-2000	BUNA N	
38	SEAT RING	1	BRASS	B-584	ALLOY C89833	B584 C87850 OR C87600
39	ENCAPSULATED MAIN VALVE	1	RUBBER	D-2000	NATURAL	
40	LOWER VALVE PLATE	1	CAST IRON	A-126	CLASS B	
41	LOCK WASHER	1	STAINLESS STEEL	A-276	304	
42	VALVE NUT	1	CAST IRON	A-126	CLASS B	
43	VALVE NUT SEAL	1	RUBBER		NATURAL	
44	BONNET HEX NUT	8	STEEL	SAE J995	GR 8 GALVANIZED	
45	STEM O-RING	2	RUBBER	D-2000	BUNA N	
46	TRAFFIC FLANGE HEX NUT	8	STEEL	SAE J995	GR 5 GALVANIZED	
47	SLEEVE	1	COPPER	B-75	ALLOY 122	
48	UPPER STEM PIN	1	STAINLESS STEEL	A-276	303	
49	STOP NUT	1	DUCTILE IRON	A536	65-45-12	
50	TOP SEAT O-RING	1	RUBBER	D-2000	BUNA N	
51	IDENTIFICATION TAG	1	STAINLESS STEEL	A-240	304	
52	DRAIN TUBE	1	COPPER	B-75	ALLOY C12200	
* 53	BURY TAG	1	STAINLESS STEEL	A-240	304	
54						
55						
56						

\* NOT SHOWN



OPEN RIGHT  
17 1/4" TURNS TO OPEN

DWG. FH 95

REV.	DESCRIPTION	REF.	DRFTR	CHKR	APP	DATE
F	REMOVE BURY NOTE	E05504	MRG			8-12-24
E	UPDATE TO 2019 HYDRANT REFRESH AND ADD ALTERNATE STANDARD	E05200	ANC	JBC	JBC	2-9-23
D	REVISED ITEMS 1,4,14,18,36,37,42		JMG			11-8-13
C	REVISED MATERIAL ON ITEM #11		MRG			2-24-12
B	REVISED MATERIAL ON ITEM # 11		ANC			11-6-09
A	ADDED A467 5-1/4 TO DRAWING		ANC		CJD	3-13-07

DRFT'G CJD 9-17-98 CHK'R JMG 9-17-98 APP E.O. NUMBER	<b>MUeller</b> RD WOOD SPIN-IN HYDRANT 4 1/2" A466 & 5 1/4" A467	<b>TOLERANCES - MACHINING</b> UNLESS OTHERWISE NOTED BREAK EDGES FINISH SURFACES MACH. .006/.016 125 FRACTIONS ±1/64 DECIMALS 2 PL ±.025 3 PL ±.016 ANGLES ±1°	THIRD ANGLE PROJECTION PURCH. FINISH REF. NO. N.T.S. STK. NO.
REVISION F	NUMBER FH 95 SHEET 1 OF 1		