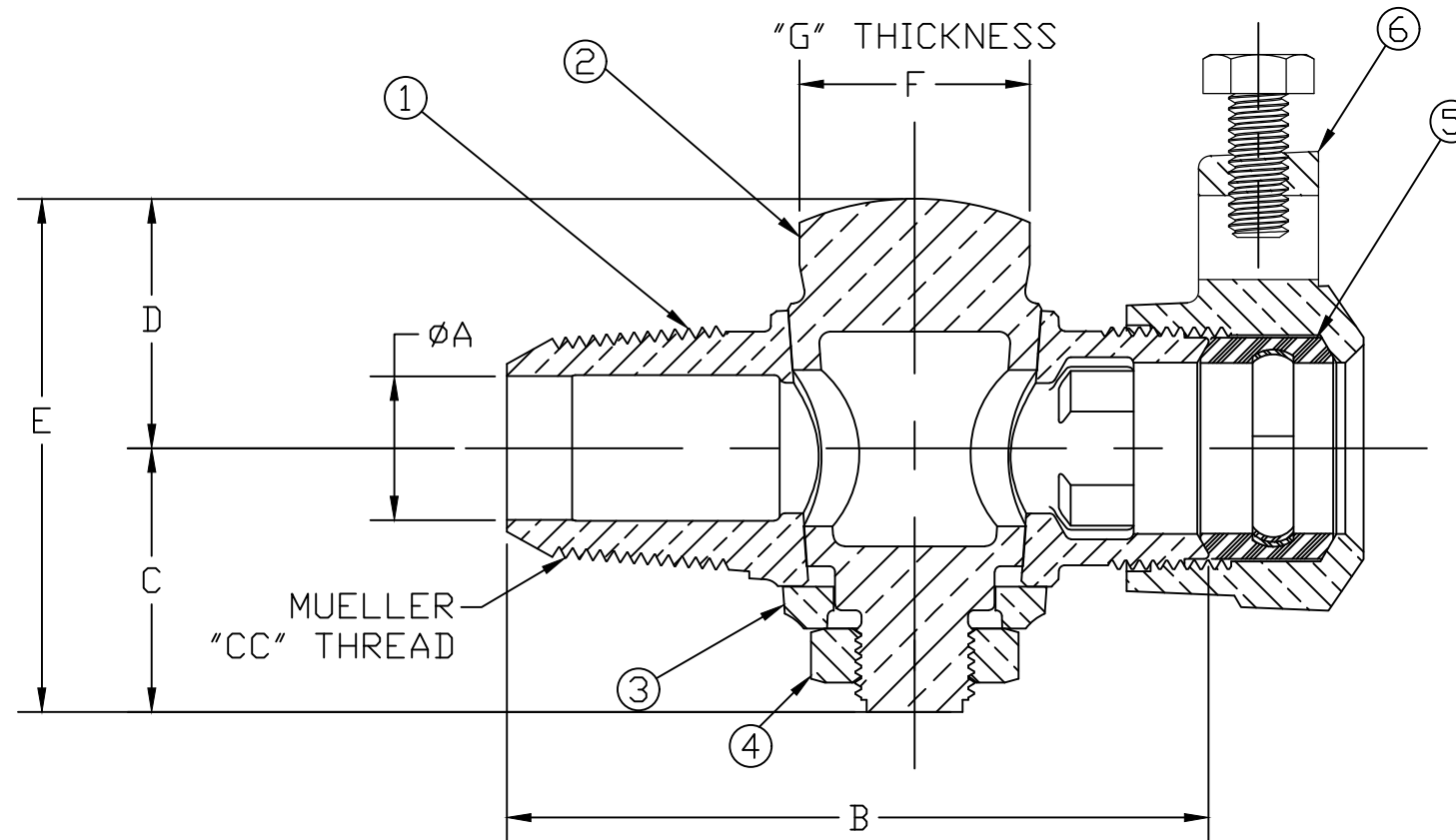


No.	DESCRIPTION	MATERIAL	SIZE	ØA	B	C	D	E	F	G
1	BODY	LEAD FREE BRASS ALLOY ASTM B584	3/4	.75	3.66	1.38	1.3	2.68	1.20	.38
2	KEY	LEAD FREE BRASS ALLOY ASTM B584	1	1.00	4.31	1.46	1.41	2.87	1.48	.38
3	KEY WASHER	CAST BRASS ALLOY ASTM B584								
4	KEY NUT	CAST BRASS ASTM B62 ALLOY C83600								
5	CTS GSKT SUB	ASTM D2000 -GSKT 410 <sub>SS</sub> -BAND								
6	THAW NUT W/ SCREW	CAST BRASS ALLOY ASTM B584								



MEETS ALL REQUIREMENTS OF AWWA C800  
 ALL WETTED PARTS ARE LEAD FREE BRASS ALLOY C89833/C87850  
 ALL NON WETTED PARTS ARE BRASS ALLOY C83600/C87850

DRFTR	RWB	5/8/15	<b>MUELLER</b>	
CHKR				
ENGR			UNLESS OTHERWISE NOTED	THIRD ANGLE PROJECTION
MGR				SURFACE PREPARATION: BREAK CORNER(S) ---- .000 SURFACE FINISH -- XX RMS
	BY	DATE	TOLERANCE(S): LINEAR ----- ± .000 ANGULAR ----- ± 0°00'	SCALE
STK No:				FULL
MAT'L:				
DESCR.			CORPORATION STOP 'CC TAPER" x 110 CTS THAW NUT)	DWG NUMBER H1500807N

DWG NUMBER  
H1500807N

TITLE TO AND OWNERSHIP OF THIS ENGINEERING DATA REMAINS IN Mueller Co. NO USE IS TO BE MADE OF THIS DATA EXCEPT AS SPECIFICALLY AUTHORIZED BY Mueller Co. ASSENT ON THE PART OF THE RECIPIENT TO THESE CONDITIONS IS PRESUMED