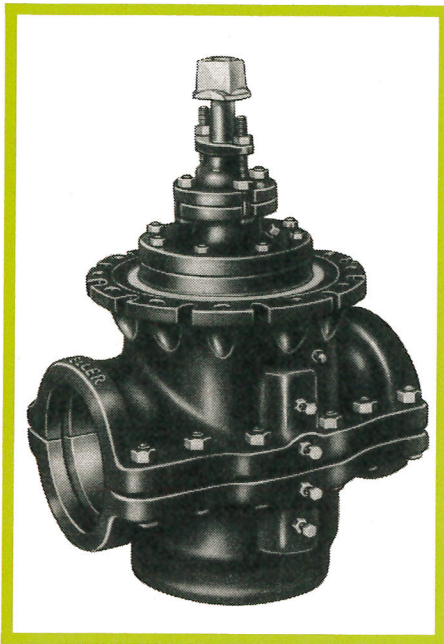


E2 SPECIAL PURPOSE MAIN FITTINGS AND VALVES

10 INSERTING VALVES



Mueller® Inserting Valves — for 4", 6" and 8" cast iron pipe

Mueller Inserting Valves are designed to be used on cast iron pipe only. Each valve consists of a two-piece sleeve and a valve body. The valve mechanism is identical to Mueller AWWA Gate Valves. Inserting valves are furnished with conventional packing and a 2" square wrench nut. A handwheel can be furnished when specified.

When ordering, specify direction of operation. This is usually left (counterclockwise). Where previous valves open right (clockwise), new valves should open in the same direction. (Wrench nut on valves that open to the right are painted red for identification.)

For inserting valve parts, see page E2-22.

Shipping weights

Size	Weight lb (kg)
4"	316 (143)
6"	528 (240)
8"	770 (349)

H-800 Inserting valve — 200 psi (1379 kPa) maximum working pressure

Sizes*: 4", 6", 8" (for cast iron pipe only)

Equipment to be selected

- 1-Drilling machine, hand or power operated, from section A3
- 1-Set of basic inserting valve equipment from page E2-11
- 1-Separate set of special inserting valve equipment for each size of valve to be inserted, from page E2-12

*Nominal sizes. Size of valve corresponds to size of main. All inserting valves have full-size seat openings.

MUELLER CO. DECATUR, ILL.

Order by quantity, size, catalog number, direction of opening and method of operation (wrench nut or handwheel)

New

Basic equipment used to install Mueller® Inserting Valves

One set of basic equipment is required to install all sizes of Mueller Inserting Valves.

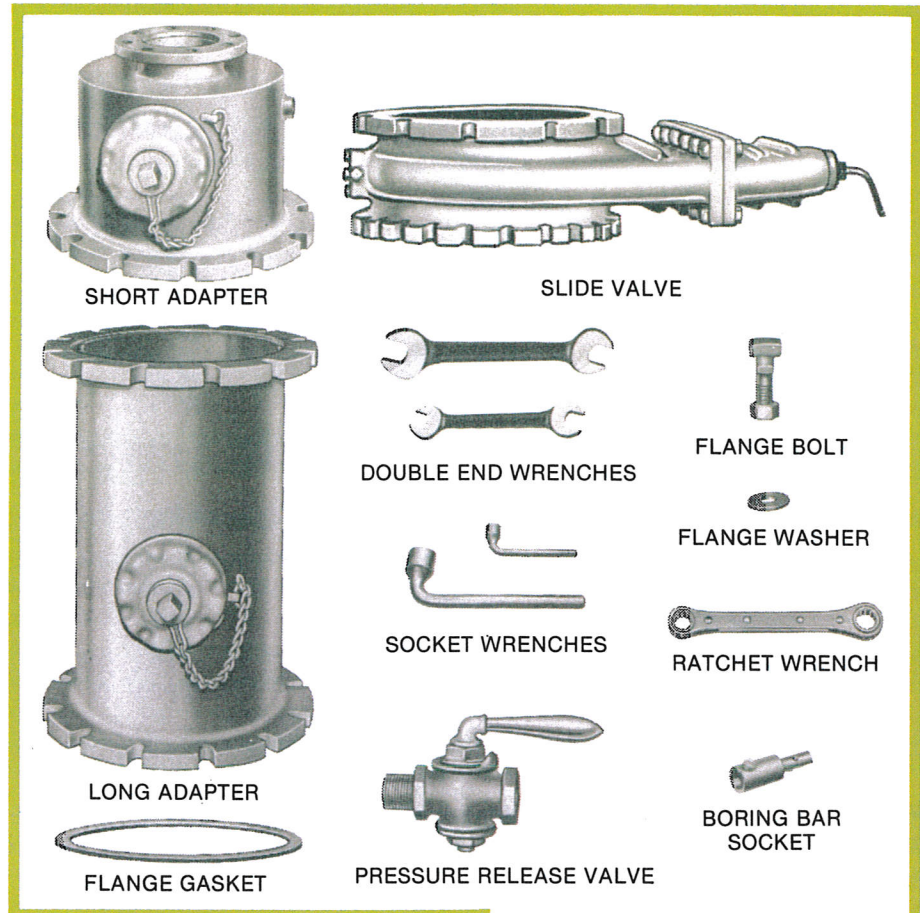
Select basic equipment according to the type of Mueller Drilling Machine that will be used to install the inserting valve. (Machines are selected from section A3.)

H-811 Basic equipment — used with CL-12 Drilling Machine

H-810 Basic Equipment — used with CC-25 or C1-25 Drilling Machine

Shipping weights

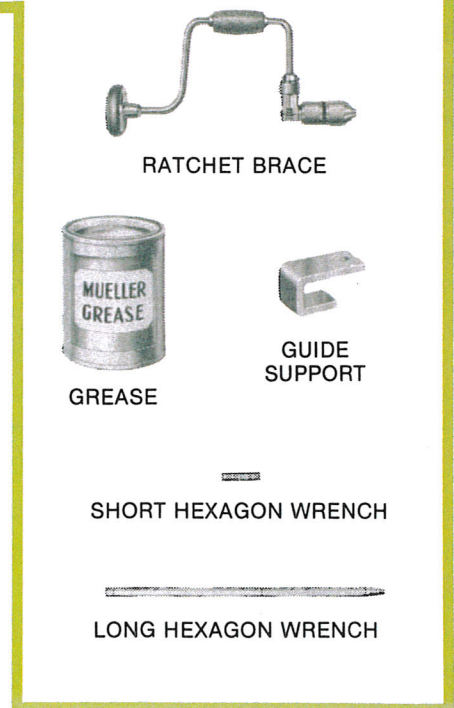
Catalog number	Weight lb (kg)
H-811	700 (318)
H-810	700 (318)



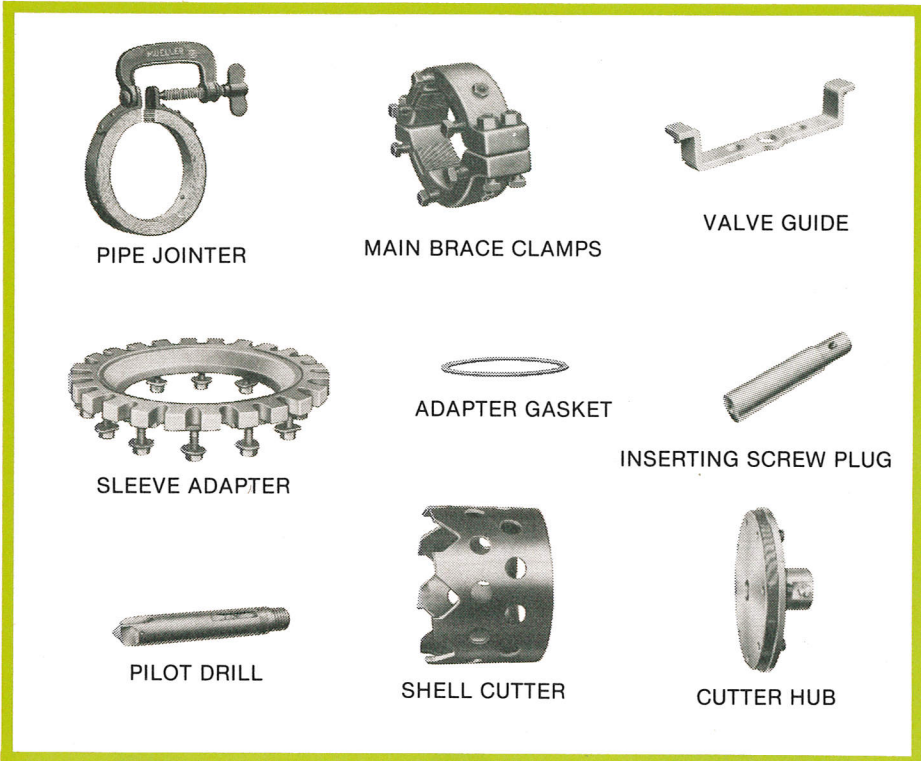
Major parts comprising basic equipment

For a complete list of replacement parts for this equipment, see page E2-22.

Part	Part numbers	
	For H-811	For H-810
Short adapter	80594	80594
Long adapter	80592	80592
Slide valve	83542	83542
Flange gasket (3)	79740	79740
Flange washers (36)	92576	92576
Flange bolts (36)	36446	36446
Double end wrench	96536	96536
Double end wrench	58196	58196
Socket wrench (small)	33124	33124
Socket wrench (large)	33125	33125
Ratchet wrench	40233	40233
Ratchet brace	51963	51963
Hex wrench (short)	40327	40327
Hex wrench (long)	33113	33113
Boring bar socket	83780	80601
Guide supports (2)	40280	40280
Grease 1 Lb	90968	90968
Pressure release valve (2)	3/4" H-11055	3/4" H-11055



E2 12 SPECIAL PURPOSE MAIN FITTINGS AND VALVES INSERTING VALVES — SPECIAL EQUIPMENT



Special equipment used to install each size of Mueller® Inserting Valve

A separate set of special equipment is required to install each size of Mueller Inserting Valve.

Select special equipment according to the size of valve to be installed and the catalog number of the basic equipment to be used. (Basic equipment is selected from page E2-11.)

H-811 Special equipment — used with CL-12 Drilling Machine and H-811 Basic equipment

H-810 Special equipment — used with CC-25 or C1-25 Drilling Machine and H-810 Basic Equipment

Sizes*: 4", 6", 8"

Shipping weights

Catalog number	Size	Weight lb (kg)
H-811 or H-810	4"	185 (84)
	6"	200 (91)
	8"	195 (88)

*Sizes correspond to the sizes of Mueller® Inserting Valves Available.

Major parts comprising special equipment

For a complete list of replacement parts for this equipment, see page E2-22.

Part	Part numbers by catalog number and size of special equipment					
	For H-811			For H-810		
	4"	6"	8"	4"	6"	9"
Pipe jointers (2)	H-10728	H-10728	H-10728	H-10728	H-10728	H-10728
Main brace clamps (2)	88197	88151	88187	88197	88151	88187
Sleeve adapter	80595	80596	—	80595	80596	—
Gasket	79741	79742	—	79741	79742	—
Pilot drill (carbide tipped)	89357	89358	89359	89353	89353	89354
Shell cutter	82995	82994	80699	82995	82994	80699
Cutter hub	83685	83682	83689	54653	33107	33182
Valve guide	80598	80600	80600	80598	80600	80600
Inserting screw plug	79768	79769	79700	79768	79769	79700

Optional carbide tipped shell cutter

An optional, carbide tipped shell cutter is available for use on cement-lined cast iron pipe. It is ordered separately.

Part	Part number by catalog number and size of special equipment					
	For H-811			For H-810		
	4"	6"	8"	4"	6"	8"
Carbide tipped shell cutter	581313	581314	581315	581313	581314	581315

MUELLER CO. DECATUR, ILL.

Order special equipment by size, catalog number and specify "Special Equipment" — order parts by quantity and part number

New

SPECIAL PURPOSE MAIN FITTINGS AND VALVES PARTS LIST — INSERTING VALVES AND EQUIPMENT

Parts list — Mueller® Inserting Valves and equipment

Item No.	Description	4"	6"	8"	No. Req'd.
1	Cutter hub	83685*	83682*	83689*	1
		54653†	33107†	33182†	1
2	Shell cutter	82995	82994	80699	1
		83684*	83687*	83688*	1
3	Pilot drill complete	88156†	88156†	88189†	1
—	Slide valve complete	83542	83542	83542	1
4	Gate washer retaining ring screw	52193	52193	52193	18
5	Gate washer retaining ring	79766	79766	79766	1
6	Gate washer	79767	79767	79767	1
7	Slide gate	60184	60184	60184	1
8	Operating rod	33197	33197	33197	1
9	Stuffing gland	33196	33196	33196	1
10	Operating rod packing	97194	97194	97194	1
11	Bonnet	60185	60185	60185	1
12	Bonnet bolts & nuts	90165	90165	90165	14
13	Bonnet gasket	60186	60186	60186	1
14	Slide valve body	83541	83541	83541	1
15	Operating rod eccentric pin	33192	33192	33192	1
16	Operating rod eccentric	33195	33195	33195	1
17	Operating rod retaining pin	63477	63477	63477	1
18	By-pass valve	88153	88153	88153	1
19	By-pass valve gasket	33116	33116	33116	1
20	Cap screw	53969	53969	53969	4
21	Adjusting screw	98856	98856	98856	12
22	Cap screw	92407	92407	92407	8
23	Jaw	33210	33109	33187	8
24	Clamp body	33209	33108	33186	4
25	Clamp body bolt & nut	90210	90210	90210	8
26	Gland nuts	170715	170715	170715	6
27	Gland bolts	190557	191516	191516	6
28	Nut for wrench nut‡	190939	190939	190939	1
29	Wrench nut‡	175829	175829	175829	1
30	Gland flange	170714	170714	175820	1
31	Gland	176324	176005	176146	1
32	Stem packing	175954	175937	175975	4
33	Stuffing box	176326	175830	175831	1
34	Stuffing box gasket	191511	192289	192405	1
	Stuffing box bolts	192247	192247	190802	2
35	Stuffing box nuts	190939	190939	190939	2
36	Bonnet	160445	160446	160447	1
37	Test plug	195244	195244	195244	1
38	Bonnet gasket	194562	194563	194564	1
39	Bonnet studs	194567	194567	194568	4"-6 6 & 8"-8
	Bonnet nuts	191439	191439	190939	4"-6 6 & 8"-8
40	Stem	176325	175953	175812	1
41	Body (with seat ring)	186525	186526	186527	1
42	Packing ring roll pins	195213	195213	195213	8
43	Top packing ring	160439	160440	160441	1
44	Top wedge nut	185711	185700	185701	1
45	Seat ring	173712	173714	173715	2
46	Disc	185704	185705	185706	2
47	Disc pin	176476	176076	176049	2
48	Side spreader	176450	176105	176187	2
49	Bottom wedge	175702	175706	175710	1
50	Ring packing	194559	194560	194561	2
51	Bottom packing ring	160442	160443	160444	1

*For CL-12 machine only

†For CC or C1 machines only

‡Not illustrated

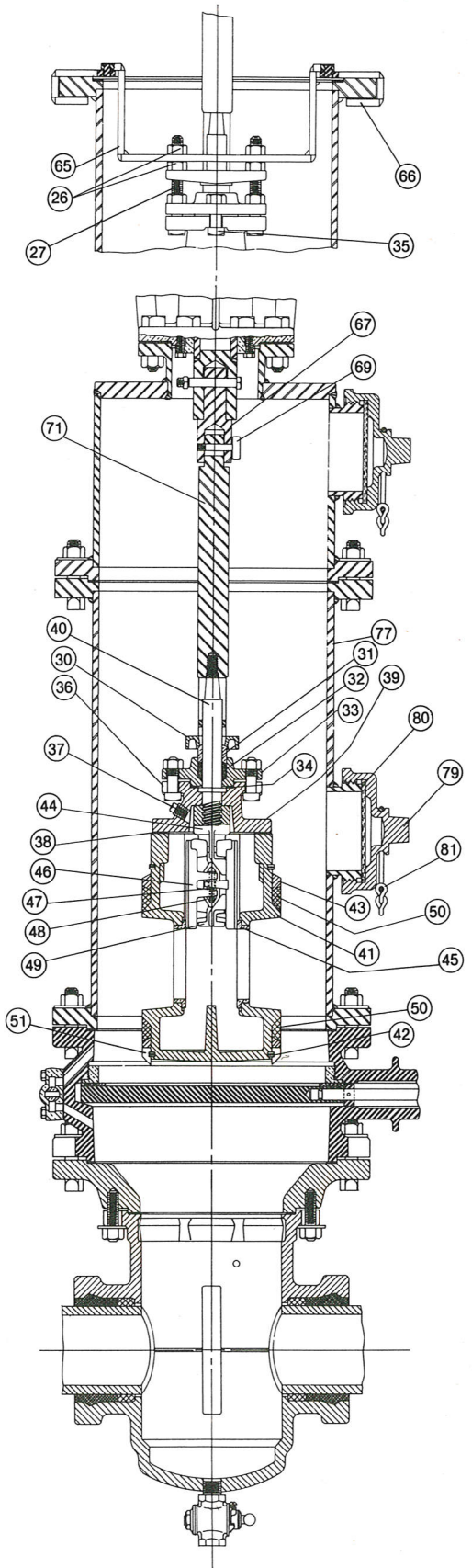
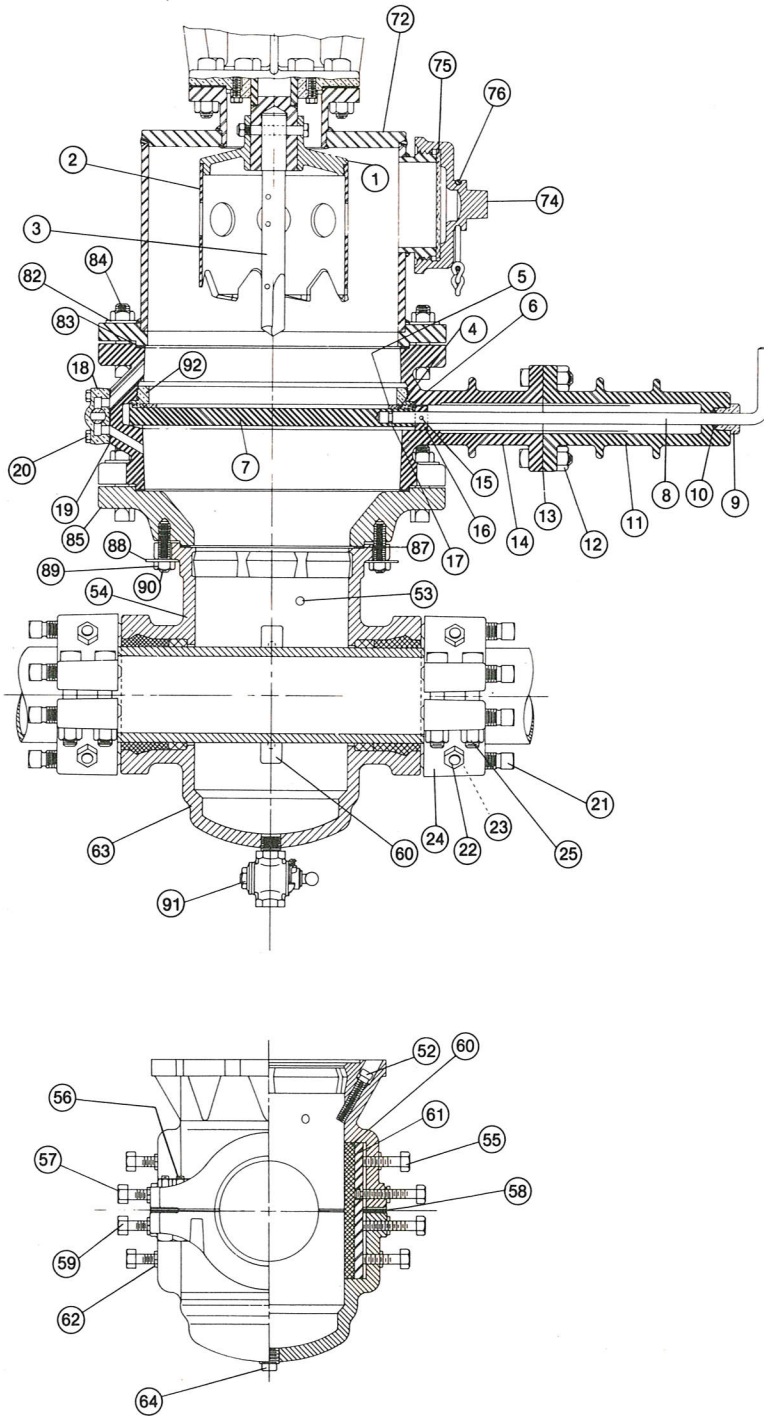
Item No.	Description	4"	6"	8"	No. Req'd.
52	Angle packing screws	194566	194566	194627	4"-10 6 & 8"-12
53	Pipe plug	195244	195244	195244	1
54	Sleeve upper section	160421	160422	160423	1
55	Spline forcing screws	194823	194823	194823	4
	Sleeve bolts	193186	193185	193185	12
56	Sleeve nuts	190941	190941	190941	12
57	Spline molding screws	194826	194826	194827	2
58	Sleeve packing	160433	160434	160435	2
59	Spline forcing screws	194824	194824	194825	2
60	Spline packing	194672	194673	194674	2
61	Spline	160427	160428	160429	2
62	True seal fittings	194828	194828	194828	8
63	Sleeve lower section	160424	160425	160426	1
64	Pipe plug	191112	191112	191112	1
65	Valve guide	80598	80600	80600	1
66	Guide supports	40280	40280	40280	2
		83780*	83780*	83780*	1
67	Boring bar socket — complete	80601†	80601†	80601†	1
		500534*	500534*	500534*	1
68	Boring bar socket — body only	33119†	33119†	33119†	1
69	Boring bar thumb screw	33120	33120	33120	1
70	Retaining screw†	54602*	54602*	54602*	1
71	Inserting screw plug	79768	79769	79770	1
72	Short adapter — complete	80594	80594	80594	1
74	Short adapter cap	45350	45350	45350	1
75	Short adapter cap gasket	192345	192345	192345	1
76	Short adapter cap chain	192376	192376	192376	1
77	Long adapter — complete	80592	80592	80592	1
79	Long adapter cap	45350	45350	45350	1
80	Long adapter cap gasket	192345	192345	192345	1
81	Long adapter cap chain	192376	192376	192376	1
82	Flange washer	92576	92576	92576	36
83	Flange gasket	79740	79740	79740	3
84	Flange bolt and nut	36446	36446	36446	36
85	Sleeve adapter — complete	80595	80596	none	1
87	Adapter gasket	79741	79742	none	1
88	Adapter stud bolt washers	55409	58321	none	4"-10 6"-12
89	Adapter stud bolt nuts	51479	51479	none	4"-10 6"-12
90	Adapter stud bolt	79760	79760	none	4"-10 6"-12
91	Pressure release valve	3/4" H-11055	3/4" H-11055	3/4" H-11055	2
92	Slide valve seat ring	79765	79765	79765	1
‡	Grease	90968	90968	90968	1 lb. can
		4"	6"	8"	
‡	Pipe jointers	H-10728	H-10728	H-10728	2
‡	Main brace clamps	88197	88151	88187	2
‡	3/8" x 7/16" ratchet wrench	40233	40233	40233	1
‡	3/4" x 13/16" double end wrench	96536	96536	96536	1
‡	1 1/16" x 1 1/4" double end wrench	58196	58196	58196	1
‡	1 1/4" socket wrench	33125	33125	33125	1
‡	3/4" socket wrench	33124	33124	33124	1
‡	3/8" short hexagon wrench	40327	40327	40327	1
‡	3/8" long hexagon wrench	33113	33113	33113	1
‡	Ratchet brace	51963	51963	51963	1

When ordering parts for Mueller Inserting Valves, specify the following:

1. Quantity
2. Size of valve
3. Part number*
4. Valve catalog number
5. Direction of opening
6. Year date of valve

CONTINUED ON E2-23

Order by quantity, part number and part name (see additional ordering instructions above)



CL-12, CC-25 or CI-25 DRILLING MACHINE (SECTION A3)

MUELLER CO. DECATUR, ILL.