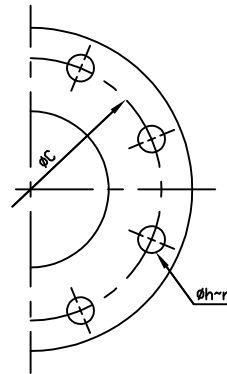
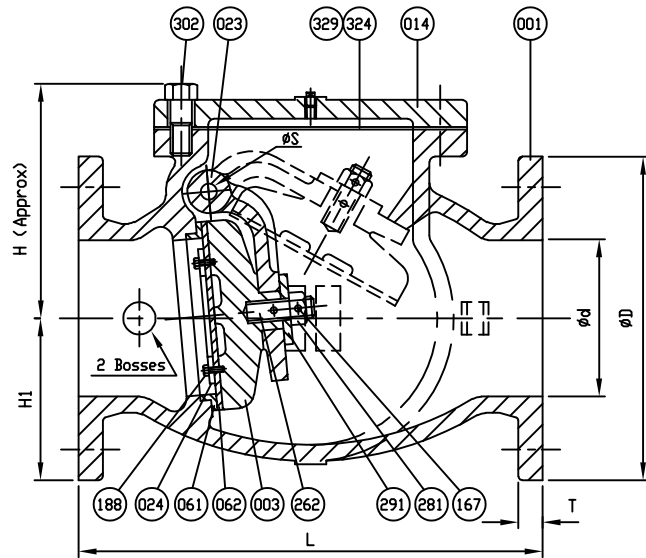


MARKING
 SIZE (INCH)
 CCNE
 200 CWP
 AWWA C508
 SERIES 8000

SCI
 YEAR
 POURING DATE

Remark - Part No. 024 (Seat Holder)
 - size 2'-6' => Cast Iron
 - size 8'-12' => Ductile Iron



408	Plug B	Brass	B 21	1
329	Cover O-Ring	Rubber (Buna N)	D 2000 BK 807	1
324	Cover Gasket	Rubber (Buna N)	D 2000 BK 807	1
302	Cover Bolt	SEE COVER BOLT TABLE		1 set
291	Washer	Brass	B 21	1
287	Spacer	Brass	B 21	2
281	Disc Nut	Brass	B 21	1
262	Disc Stud	Brass	B 21	1
188	Disc Seat Bolt	Stainless Steel	A 276 Type 304	1 set
167	Pin	Stainless Steel	A 276 Type 304	2
166	Plug A	Stainless Steel	A 276 Type 304	1
159	Hinge Pin	Stainless Steel	A 276 Type 304	1
062	Disc Seat Ring	Rubber (Buna N)	D 2000 BK 807	1
061	Body Seat Ring	Bronze	B 62	1
024	Seat Holder	See Remark		1
023	Arm	Ductile Iron	A 536 Gr. 65-45-12	1
014	Cover	Cast Iron	A 126 Class B	1
003	Disc	Cast Iron	A 126 Class B	1
001	Body	Cast Iron	A 126 Class B	1
NO.	PARTS	MATERIAL	ASTM. DESIGNATION.	Q' TY

MATERIAL LIST

HYDRO SHELL	400	PSI.
HYDRO VALVE SEAT	200	PSI.
HYDRO BACK SEAT	—	PSI.
AIR SEAT	—	PSI.
STEAM	—	PSI.
TEST PRESSURE		
WORKING PRESSURE	200	PSI.



SCALE	DR. JON COLPAN	DATE 02/04/11	REF. DWG.
N.T.S.	CHK.	APP.	E.C.N.
USA1847A			
TITLE			
SIZE 2" TO 12" GRAVITY SWING CHECK VALVE AWWA C508 BRONZE BODY SEAT RING & BUNA N DISC SEAT RING			
TYPE:	DWG NO.	REV.	
A2602-6B1	M80020	4	

COVER BOLTS		
TYPE	MATERIAL	
STANDARD	STEEL/ZINC	✓
S1	304 STN. STEEL	
S3	316 STN. STEEL	

SIZE Ød in. mm.	L	ANSI B16.1 CL. 125						ØS	H	H1	L1	PLUG SIZE
		ØD	ØC	Øh	n	T						
2 (50)	8	6	4 3/4	3/4	4	5/8	3/8	4 15/16	3	2 13/16	1/2	
2 1/2 (65)	8 1/2	7	5 1/2	3/4	4	11/16	3/8	5 11/16	3 1/2	3 9/16	1/2	
3 (80)	9 1/2	7 1/2	6	3/4	4	3/4	1/2	6 1/16	3 3/4	4 1/16	1/2	
4 (100)	11 1/2	9	7 1/2	3/4	8	15/16	1/2	6 7/8	4 1/2	4 15/16	1/2	
6 (150)	14	11	9 1/2	7/8	8	1	3/4	8 1/2	5 1/2	5 15/16	3/4	
8 (200)	19 1/2	13 1/2	11 3/4	7/8	8	1 1/8	7/8	9 15/16	6 3/4	8 1/16	3/4	
10 (250)	24 1/2	16	14 1/4	1	12	1 3/16	1	11 3/16	8	9 3/16	1	
12 (300)	27 1/2	19	17	1	12	1 1/4	1 1/8	13 9/16	9 1/2	10 13/16	1	

REVISION 1, CHANGED ITEM 166 MTRL. TYPE FROM MALLEABLE IRON A47 TO, UJC, 03/08/11, ECR# 456
 REVISION 3, ADDED COVER BOLT TABLE, TT/JL, 06/10/19

REVISION 2, ADDED COVER O-RING TO MATERIAL TABLE AND REMOVED PAINT NOTE, AA, 11/28/17
 REVISION 4. UPDATED NEW LOGOS, TT/JL, 07/19/19

DS01 ISSUED - 240640 REVISED -