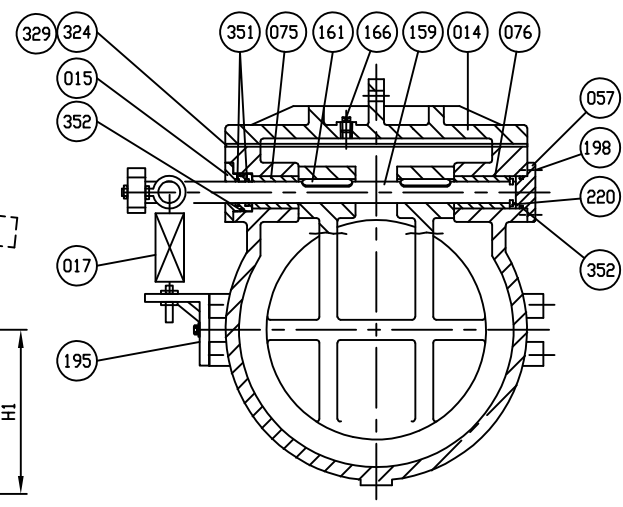
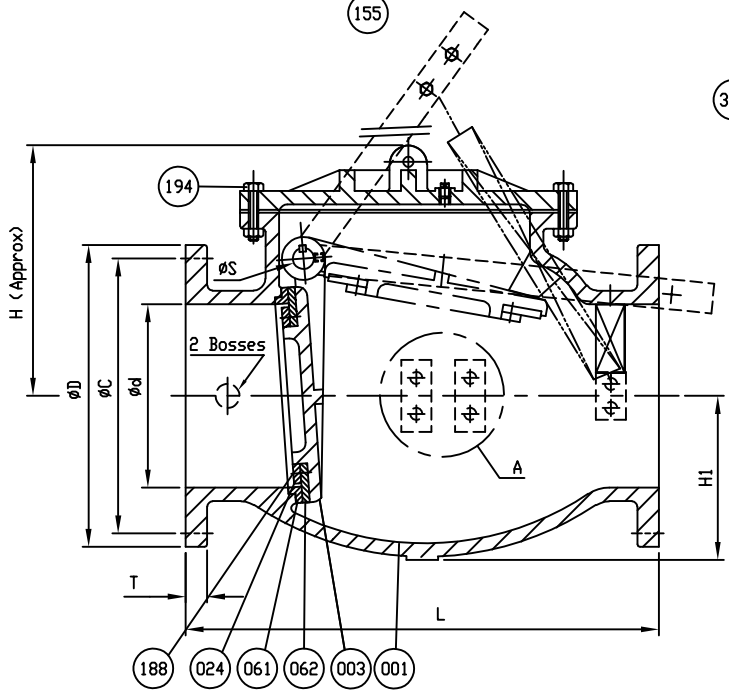


COVER BOLTS/NUTS		
TYPE	MATERIAL	✓
STANDARD	STEEL/ZINC	
S1	304 STN. STEEL	
S3	316 STN. STEEL	

Marking  
 SIZE (INCH)  
 CCNE  
 150 CWP  
 AWWA C508  
 SERIES 8000  
 SC. (Symbol)  
 YEAR  
 POURING DATE (Symbol)



- Dimensions in inches

NO.	PARTS	MATERIAL	ASTM. DESIGNATION.	Q'TY
463	Spring Hardware Kit	Stainless Steel	A 276 Type 304	1set
352	O-Ring C	Rubber (Buna N)	D 2000 BK 707	2
351	O-Ring B	Rubber (Buna N)	D 2000 BK 707	2
329	Cover O-Ring	Rubber (Buna N)	D 2000 BK 807	1
324	Cover Gasket	Rubber (Buna N)	D 2000 BK 807	1
220	Snap Ring	Stainless Steel	A 276 Type 420	1
198	End Plate Bolt	Zinc Coated Steel	A 307 Grade B	1set
195	Spring Bracket	Stainless Steel	A 276 Type 304	1
194	Cover Bolt & Nut	SEE COVER BOLT TABLE		1set
188	Disc Seat Bolt	Stainless Steel	A 276 Type 304	1set
172	Spring	Spring Steel	Stainless Steel	1
166	Plug Ø1"	Stainless Steel	A 276 Type 304	1
161	Key	Stainless Steel	A 276 Type 304	2
159	Hinge Pin	Stainless Steel	A 276 Type 304	1
155	Spring Arm	Ductile Iron	A 536 Gr. 65-45-12	1
076	Bushing (B)	Bronze	B 62	1
075	Bushing (A)	Bronze	B 62	1
062	Disc Seat Ring	Rubber (Buna N)	D 2000 BK 807	1
061	Body Seat Ring	Bronze	B 62	1
057	End Plate (B)	Ductile Iron	A 536 Gr. 65-45-12	1
024	Seat Holder	Ductile Iron	A 536 Gr. 65-45-12	1
015	End Plate (A)	Bronze	B 62	1
014	Cover	Cast Iron	A 126 Class B	1
003	Disc	Ductile Iron	A 536 Gr. 65-45-12	1
001	Body	Cast Iron	A 126 Class B	1

MATERIAL LIST			
HYDRO SHELL		300	PSI.
HYDRO VALVE SEAT		150	PSI.
HYDRO BACK SEAT		-	PSI.
AIR SEAT		-	PSI.
STEAM		-	PSI.
TEST PRESSURE			
WORKING PRESSURE		150	PSI.



SCALE N.T.S.	DR. JON COLPAN CHK.	DATE 02/22/11 APP.	REF. DWG. E.C.N.	USA1362D
TITLE SIZE 14" & 16" SWING CHECK VALVE AWWA C508 BRONZE BODY SEAT RING & BUNA N DISC SEAT RING WITH ONE LEVER AND SPRING				
TYPE: 8001AB1LS	DWG NO. M80022	REV. 7		

SIZE Ød in. mm.	L	ANSI B16.1 CL. 125					ØS	ØB	H	H1	I	J	K	M	N	Ø
		ØD	ØC	Øh	n	T										
14 (350)	31	21	18 3/4	1 1/8	12	1 3/8	1 3/4	22 3/16	19 5/16	12 1/16	1	2 1/8	4 1/2	4	3/4x10v<UNC	6
16 (400)	36	23 1/2	21 1/4	1 1/8	16	1 7/16	2	24 1/8	21 1/2	13 1/4	1	2 1/8	4 1/2	4	3/4x10v<UNC	6

REV 1, CHANGED ITEM 166 MTRL. TYPE FROM MALLEABLE IRON A47 TO, JC, 03/08/11, ECR# 456  
 REV 3, MUELLER PART NUMBER CHANGED FROM A2602-6B1LS TO 8001AB1LS, JC, 03/24/15, PER LARRY AULICH  
 REV. 5: ADDED 329 BALLOON, DJK, 6/20/18  
 REV. 7: UPDATED NEW LOGOS, TT/JL, 07/19/19

REV 2, ADDED ITEM 220 SNAP RING MATERIAL TYPE, JC, 04/04/11, ECR# 491  
 REV 4, ADDED COVER O-RING TO MATERIAL TABLE AND REMOVED PAINT NOTE, AA, 11/28/17  
 REV. 6: ADDED COVER BOLT TABLE, TT/JL, 6/06/19

DSD1 ISSUED : 240640 REVISED: - USA1362C=>CHANGE THREAD UNC