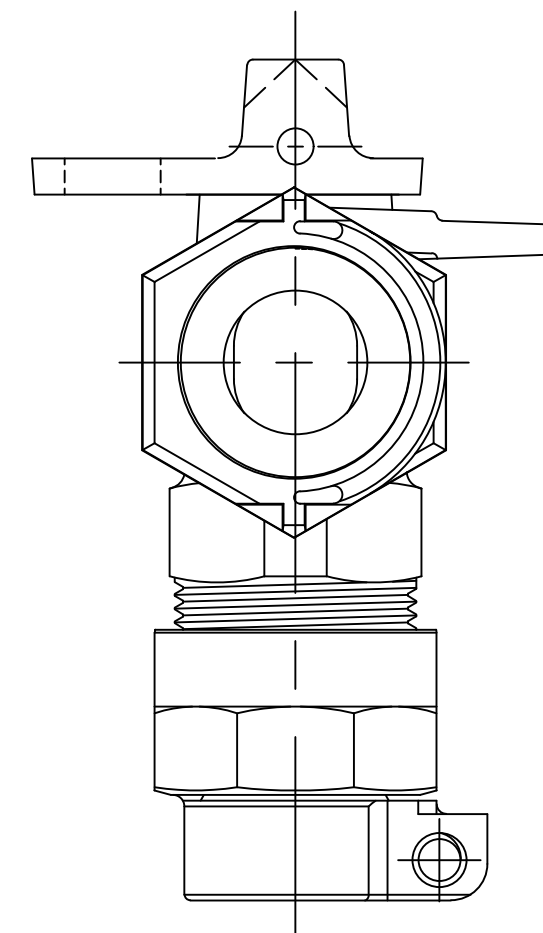
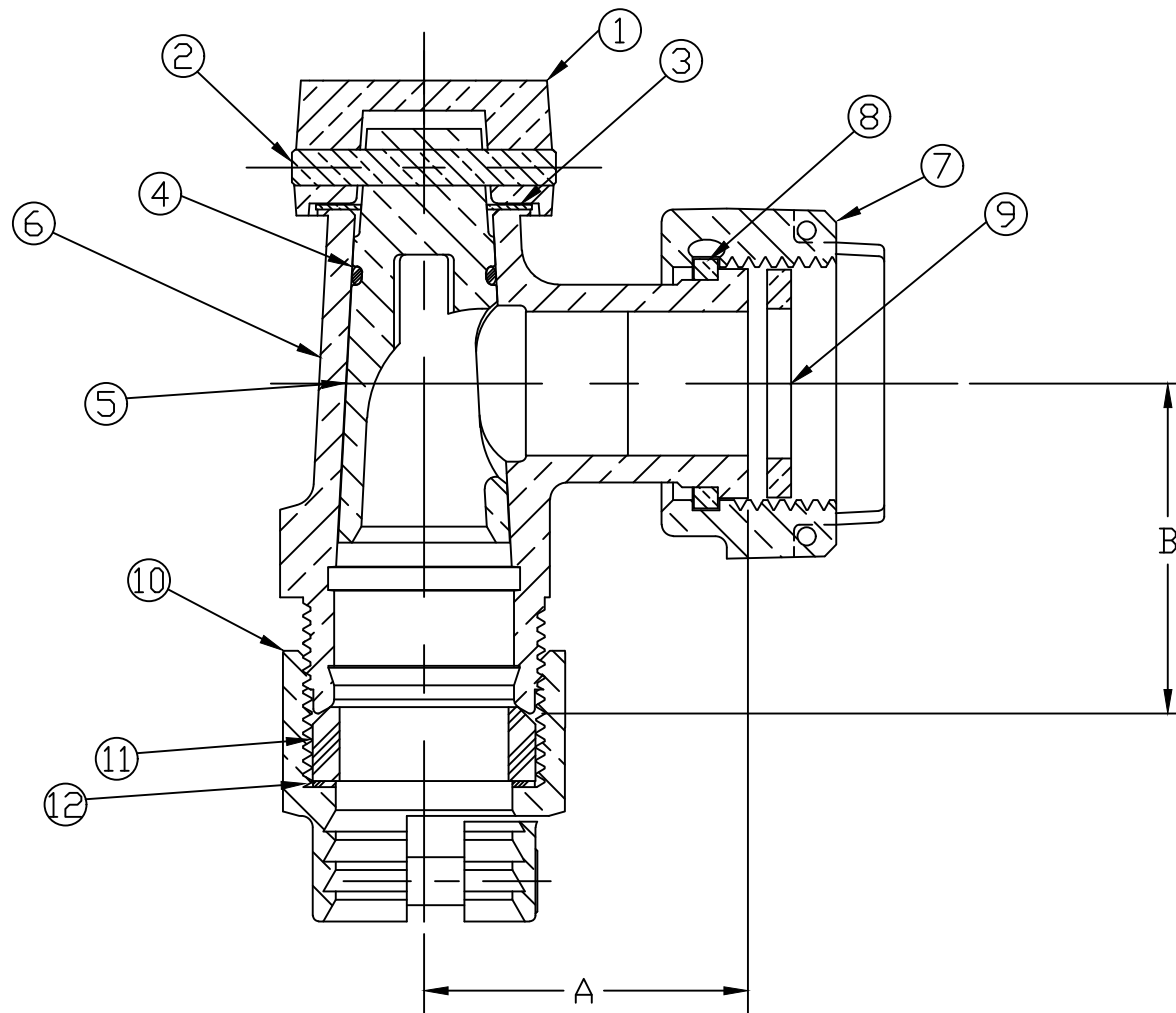


No.	QTY.	DESCRIPTION	MATERIAL	No.	QTY.	DESCRIPTION	MATERIAL
1	1	KEY CAP	CAST BRASS ALLOY ASTM B584	7	1	SADDLE NUT	CAST BRASS ALLOY ASTM B584
2	1	PIN	CAST BRASS ALLOY ASTM B584	8	1	SNAP RING	PHOS BRONZE
3	1	SPRING WASHER	PHOS BRONZE	9	1	RUBBER GASKET	EPDM D2000
4	1	O-RING	EPDM D2000	10	1	PJ CPLG NUT	CAST BRASS ASTM B62 ALLOY C83600
5	1	KEY	LEAD FREE BRASS ALLOY ASTM B584	11	1	PJ GASKET	EPDM D2000
6	1	BODY	LEAD FREE BRASS ALLOY ASTM B584	12	1	PJ WASHER	POLYPROPYLENE



METER CONNX SIZE	A	B
5/8 x 3/4	1-11/16"	1-23/32"
5/8 x 3/4 X 3/4	1-11/16"	1-23/32"
5/8 x 3/4 X 1	1-11/16"	1-31/32"
1	1-15/16"	2-1/8"

MEETS ALL REQUIREMENTS OF AWWA C800
 ALL WETTED PARTS ARE LEAD FREE BRASS ALLOY C89833/C87850
 ALL NON WETTED PARTS ARE BRASS ALLOY C83600/C87850

DRFTR	JGarvin	4/7/09	MUELLER	
CHKR				
ENGR			UNLESS OTHERWISE NOTED	THIRD ANGLE PROJECTION
MGR				SURFACE PREPARATION: BREAK CORNER(S) ----- .000 SURFACE FINISH -- XX RMS
	BY	DATE	TOLERANCE(S): LINEAR ----- ± .000 ANGULAR ----- ± 0°00'	SCALE
STK No:				FULL
MAT'L:				
DESCR.			ANGLE METER STOP PJ CTS x MTR	DWG NUMBER P14258N

TITLE TO AND OWNERSHIP OF THIS ENGINEERING DATA REMAINS IN Mueller Co. NO USE IS TO BE MADE OF THIS DATA EXCEPT AS SPECIFICALLY AUTHORIZED BY Mueller Co. ASSENT ON THE PART OF THE RECIPIENT TO THESE CONDITIONS IS PRESUMED

DWG NUMBER
P14258N