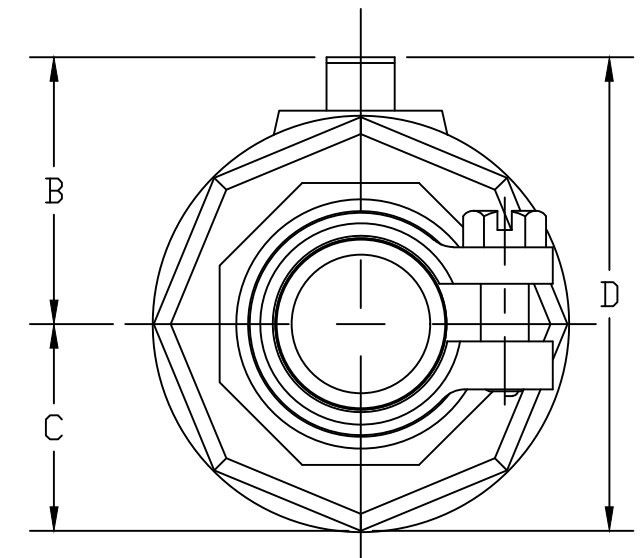
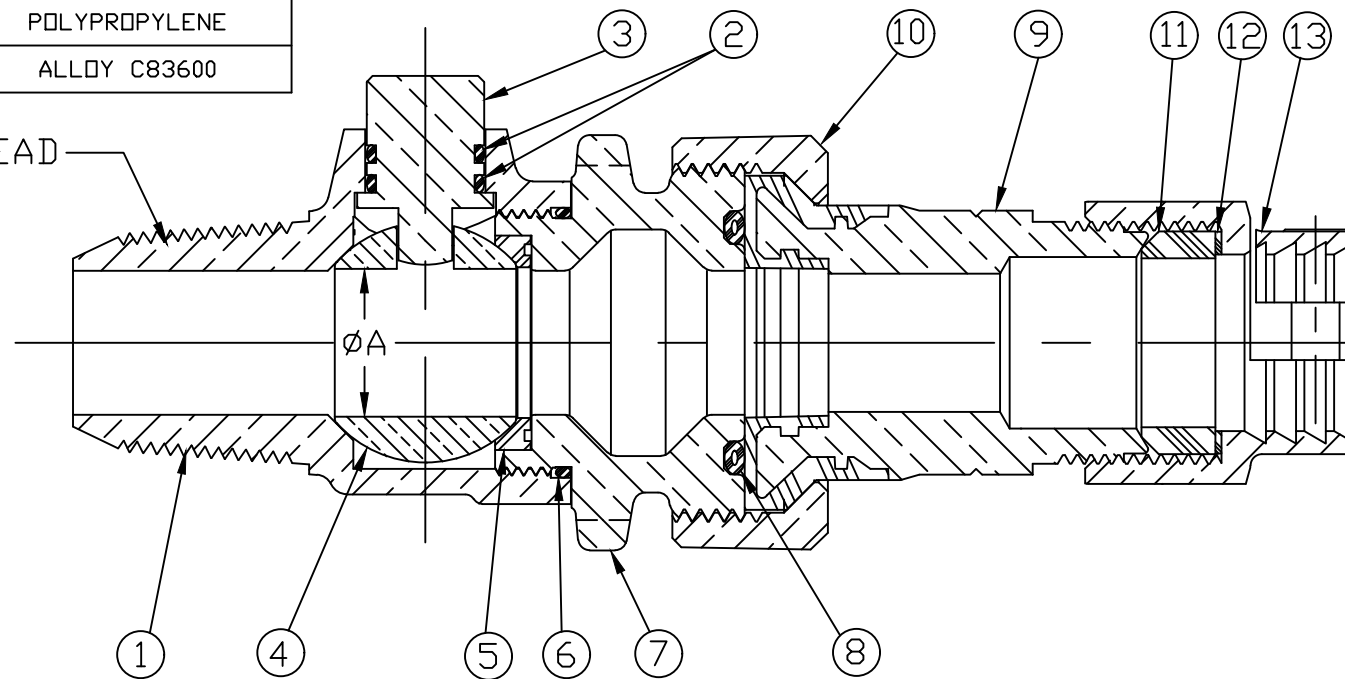


No.	DESCRIPTION	REQ'D	MATERIAL	ASTM	ALLOY OR TYPE
1	BODY	1	BRASS	B584	LEAD FREE ALLOY
2	O-RING	2	RUBBER	D-2000	EPDM
3	STEM	1	BRASS	B584/B371	LEAD FREE ALLOY
4	BALL	1	BRASS	B584	LEAD FREE ALLOY
5	GASKET	1	RUBBER	D-2000	EPDM
6	O-RING	1	RUBBER	D-2000	EPDM
7	END PIECE	1	BRASS	B584	LEAD FREE ALLOY
8	O-RING	1	RUBBER	D-2000	EPDM
9	INS. TAILPC ASS'Y	1	BRASS w/ NYLON	B584	CAST ALLOY
10	COUP. NUT	1	BRASS	B-62	ALLOY C83600
11	PJ GASKET	1	RUBBER	D-2000	EPDM
12	PJ WASHER	1	PLASTIC		POLYPROPYLENE
13	CLPG NUT SUB	1	BRASS	B-62	ALLOY C83600

SIZE	ØA	B	C	D	E
3/4"	.750	1.391	1.078	2.469	5.599
1"	1.000	1.591	1.353	2.944	6.334

"CC" MUELLER THREAD



MEETS ALL REQUIREMENTS OF AWWA C800  
 ALL STEMS ARE LEAD FREE BRASS ALLOY C89833/C69300  
 ALL WETTED PARTS ARE LEAD FREE BRASS ALLOY C89833/C87850  
 ALL NON WETTED PARTS ARE BRASS ALLOY C83600/C87850

DRFTR	RWB	3/9/23	<b>MUELLER</b>		
CHKR					
ENGR			UNLESS OTHERWISE NOTED SURFACE PREPARATION: BREAK CORNER(S) ---- .000 SURFACE FINISH -- 000 RMS	THIRD ANGLE PROJECTION	
MGR				TOLERANCE(S): LINEAR ----- ± .000 ANGULAR ----- ± 0°00'	REF. No.
		BY	DATE	SCALE	NONE
STK No:					
MAT'L:					
DESCR.			BALL CORP VALVE ASS'Y CC x INSULATED UNION PJ CTS		DWG NUMBER P35008N

TITLE TO AND OWNERSHIP OF THIS ENGINEERING  
 DATA REMAINS IN Mueller Co. NO USE IS TO BE  
 MADE OF THIS DATA EXCEPT AS SPECIFICALLY  
 AUTHORIZED BY Mueller Co. ASSENT ON THE PART  
 OF THE RECIPIENT TO THESE CONDITIONS IS PRESUMED

DWG NUMBER  
P35008N