

NOMINAL MAIN SIZE	PIPE OD RANGE	SADDLE TYPE (BR2B)	THREAD TYPE	AVAILABLE TAP DIAMETERS					
				.50"	.75"	1"	1.25	1.5"	2"
4"	4.74"-5.32"	BR2B0474	CC OR IP	050	075	100	---	---	---
	4.74"-5.10"	BR2B0474	CC OR IP	---	---	---	125	125	125
	5.10"-5.40"	BR2B0510	CC OR IP	---	---	---	125	150	200
6"	6.84"-7.45"	BR2B0684	CC OR IP	050	075	100	125	150	200
8"	8.99"-9.67"	BR2B0899	CC OR IP	050	075	100	125	150	200
10"	11.04"-12.12"	BR2B1104	CC OR IP	050	075	100	125	150	200
12"	13.14"-14.58"	BR2B1314	CC OR IP	050	075	100	125	150	200
14"	15.22"-16.88"	BR2B1522	CC OR IP	050	075	100	125	150	200
16"	17.32"-19.19"	BR2B1732	CC OR IP	050	075	100	125	150	200

TO DETERMINE PART NUMBER
CONCATENATE THE FOLLOWING STRING WITH NO SPACES OR COMMAS:

TYPE, THREAD TYPE, TAP DIA, AND OPTIONS

EXAMPLES:
BR2B0474CC100
BR2B0899IP200EP

IP STANDS FOR AWWA IP THREAD (FIPT)
CC STANDS FOR AWWA TAPER THREAD (CC)

1.25" ONLY AVAILABLE IN AWWA IP THREAD.

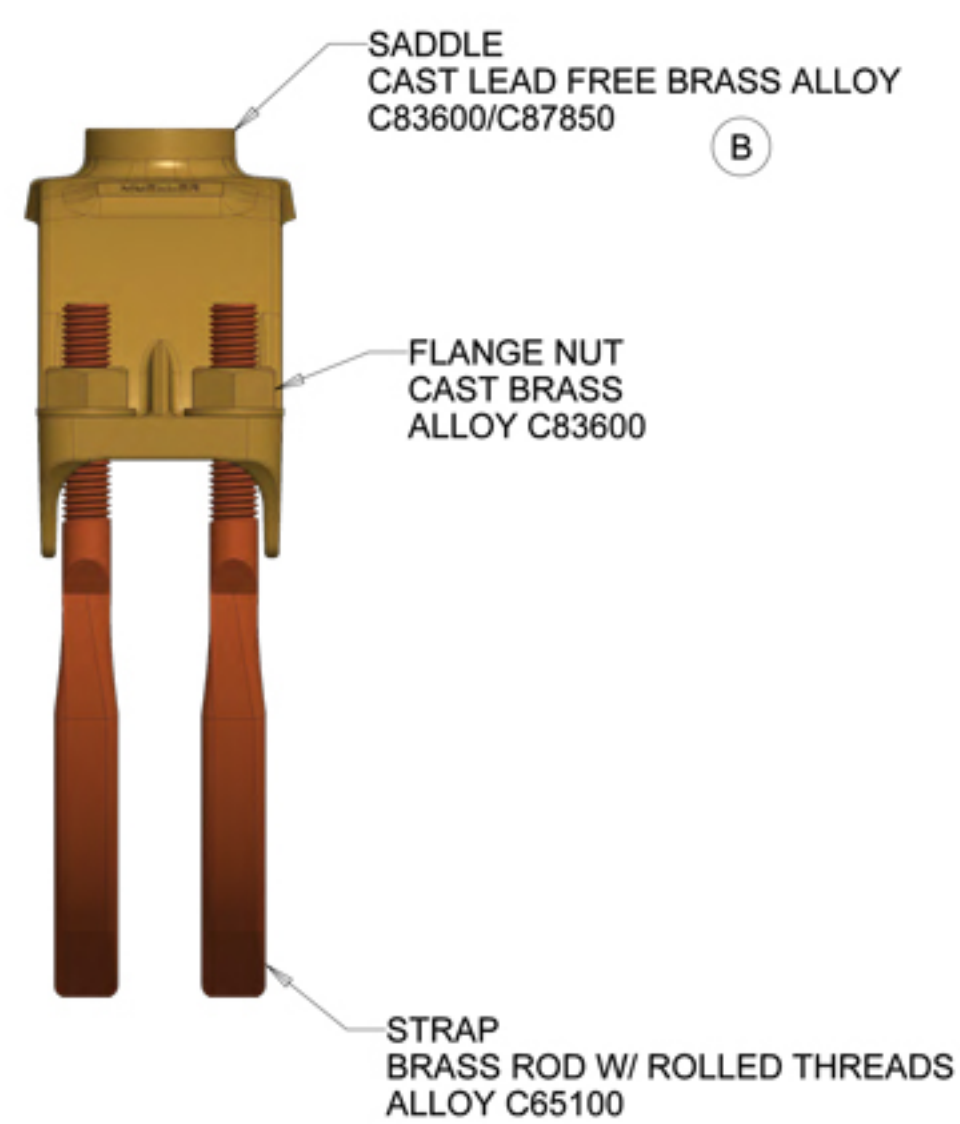
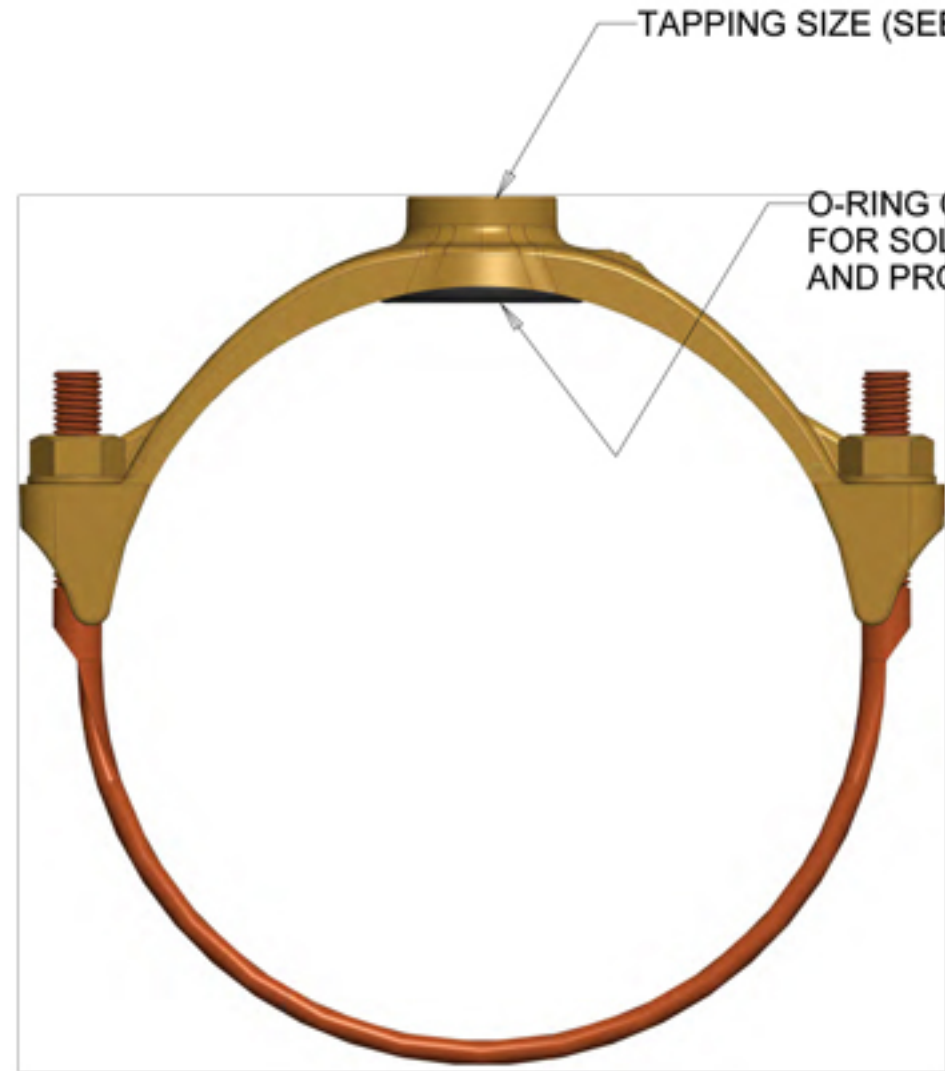
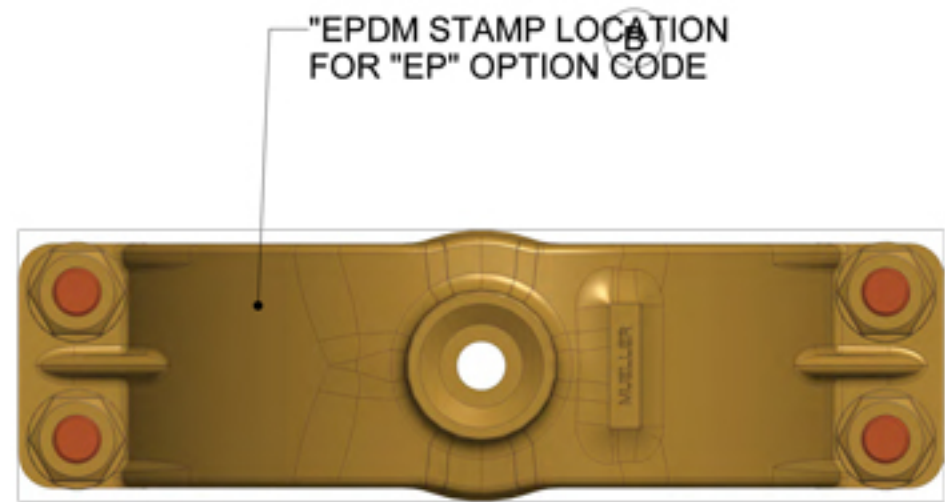
---: DESIGNATES THAT SIZE/APPLICATION IS NOT AVAILABLE.

DEFAULT O-RING MATERIAL IS NBR. (B)

ADD "EP" TO END OF PART NUMBER FOR EPDM O-RING. AVAILABLE ON 4"-12" SADDLES. (B)

ALL ASSEMBLIES NSF-61 CERTIFIED.

REVISIONS					
REV	ECR	DESCRIPTION	DRAWN BY	DATE	APPROVED
B		DRAWING RE-MADE ADDED 87850 MATERIAL NOTES ADDED ADDITIONAL NOTE FOR NITRILE VS EPDM O-RING OPTION CLARIFIED RANGE FOR EPDM OPTION ADDED EPDM STAMP LOCATION NOTE	ETB	08/27/2024	
C		UPDATED DRAWING NAME TO SUBMITTAL_BR2B REMOVED 16"-24" RANGE (COVERED IN A DIFFERENT SUBMITTAL) ADDED EXTRA VIEWS FOR LARGE BOSS ADDED CLARIFICATION FOR DIFFERENCES IN CURRENT AND UPDATED DESIGNS REMOVED TOLERANCES FROM TITLE BLOCK	ETB	02/06/2025	



(C)

	CURRENT DESIGN	UPDATED DESIGN
SMALL BOSS SADDLE TAPS 0.50"-1.00"		
LARGE BOSS SADDLE TAPS 1.25"-2.00"		

INTERPRET THIS DRAWING IN ACCORDANCE WITH ASME Y14.5 2018

UNLESS OTHERWISE SPECIFIED DIMENSIONS ARE IN INCHES CASTING TOLERANCES

DO NOT SCALE DRAWING

() = CRITICAL () = REFERENCE

TITLE AND OWNERSHIP OF THIS ENGINEERING DATA REMAINS IN Mueller Co. ASSENT ON THE PART OF THE RECIPIENT TO THESE CONDITIONS IS PRESUMED.

MATERIAL: SEE PRINT
STK NUMBER: REF. NO.

NAME	DATE	THIRD ANGLE PROJECTION	
DRAWN BY: ETB	Aug-27-24		
D.E. APPR.			
M.E. APPR.			
G.A. APPR.			
TITLE: 4"-16" BR-STYLE SERVICE SADDLE BRONZE SERVICE SADDLE WITH DOUBLE BRONZE STRAPS			
DWG. NUMBER: SUBMITTAL_BR2B			REV: C
SCALE: 0.500	WT:	SHEET 1 OF 1	